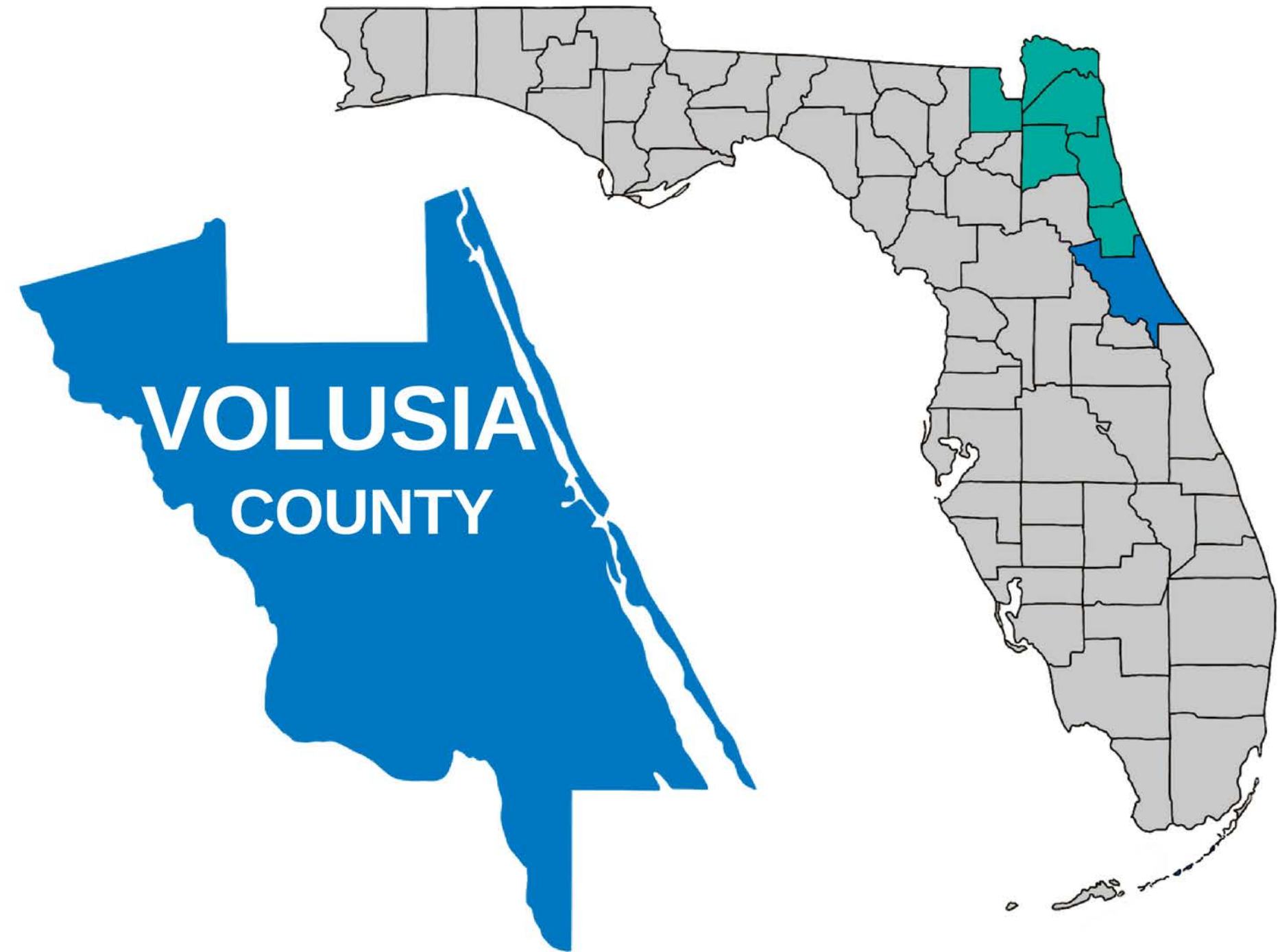




OUR VISION:

Northeast Florida will become the healthiest region in the state through evidence-based assessment, data, and planning.



Health Planning
Council OF NORTHEAST
FLORIDA



hpcnef.org



4201 Baymeadows Road, Suite 2
Jacksonville, Florida 32217



(904) 448-4300

Population

Volusia County



548,783

2.6% of Florida
Population

Florida



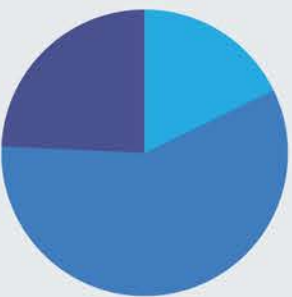
21,339,762

Data Source: U.S. Census Bureau, 2017-2021 American Community Survey 5-Year Estimates, DP05

Age Groups

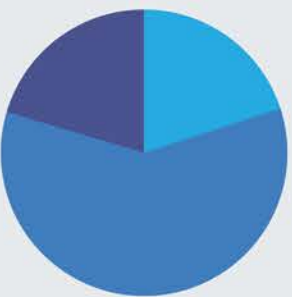
Volusia County

	Estimate	Percent
Under 18	97,591	17.8%
18 - 64	317,584	57.9%
65+	133,608	24.3%



Florida

	Estimate	Percent
Under 18	4,261,313	20.0%
18 - 64	16,643,484	59.6%
65+	4,346,965	20.4%



Data Source: U.S. Census Bureau, 2017-2021 American Community Survey 5-Year Estimates, S0101

Gender

Volusia County



51.0%

279,927 Females



49.0%

268,856 Males

Florida



50.8%

10,850,214 Females



49.2%

10,489,548 Males

Data Source: U.S. Census Bureau, 2017-2021 American Community Survey 5-Year Estimates, DP05

Race / Ethnicity

Volusia County

	Estimate	Percent	Estimate	Percent
One Race	524,709	95.6%	19,338,037	90.6%
White	421,652	76.8%	14,449,017	67.7%
Black or African American	59,821	10.9%	3,358,469	15.7%
American Indian & Alaskan Native	1,129	0.2%	54,466	0.3%
Asian	9,989	1.8%	596,862	2.8%
Native Hawaiian & Other Pacific Islander	87	0.0%	13,065	0.1%
Some other race	32,031	5.8%	866,158	4.1%
Two or more races	24,074	4.4%	2,001,725	9.4%
Hispanic or Latino (of any race)	82,834	15.1%	5,593,090	26.2%

Florida

Data Source: U.S. Census Bureau, 2017-2021 American Community Survey 5-Year Estimates, DP05

COUNTY HEALTH RANKINGS, VOLUSIA COUNTY, 2023

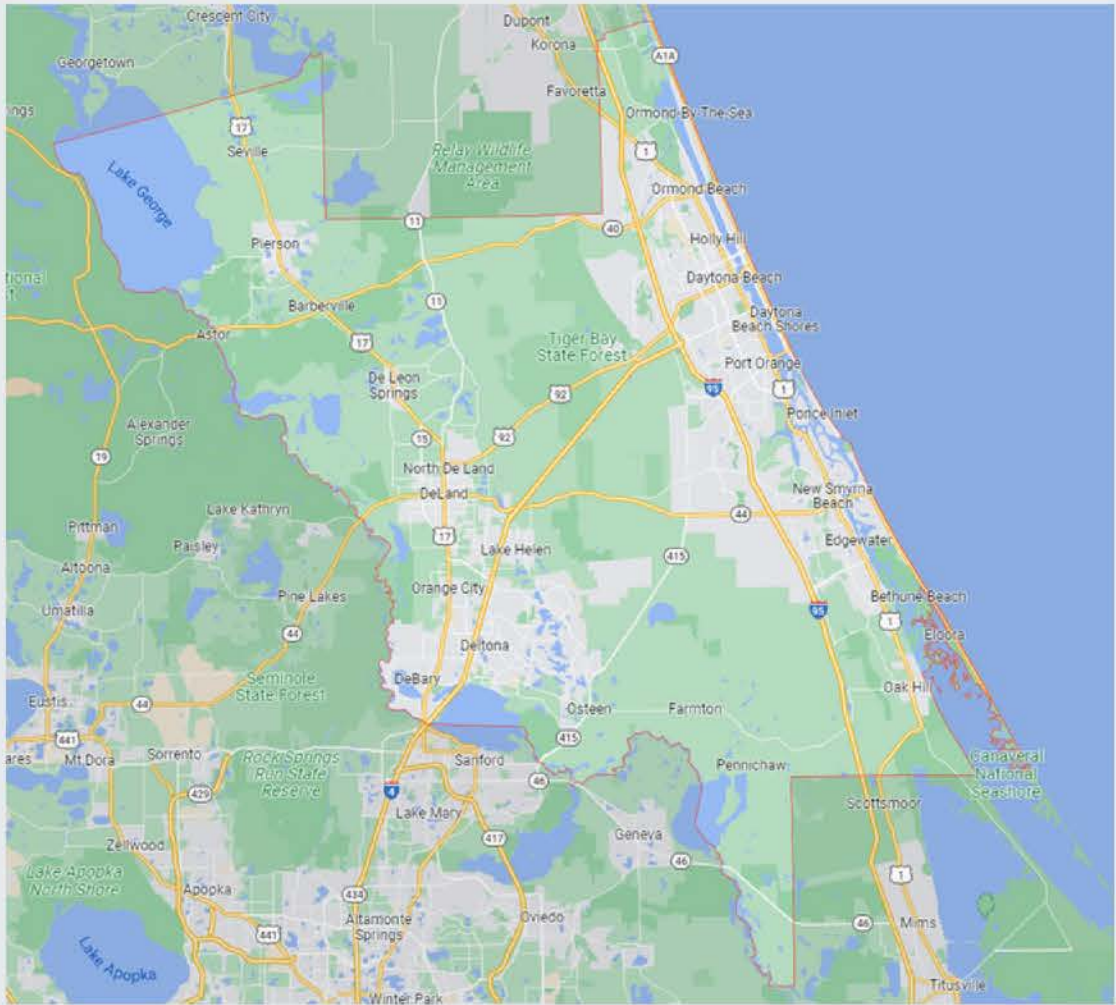
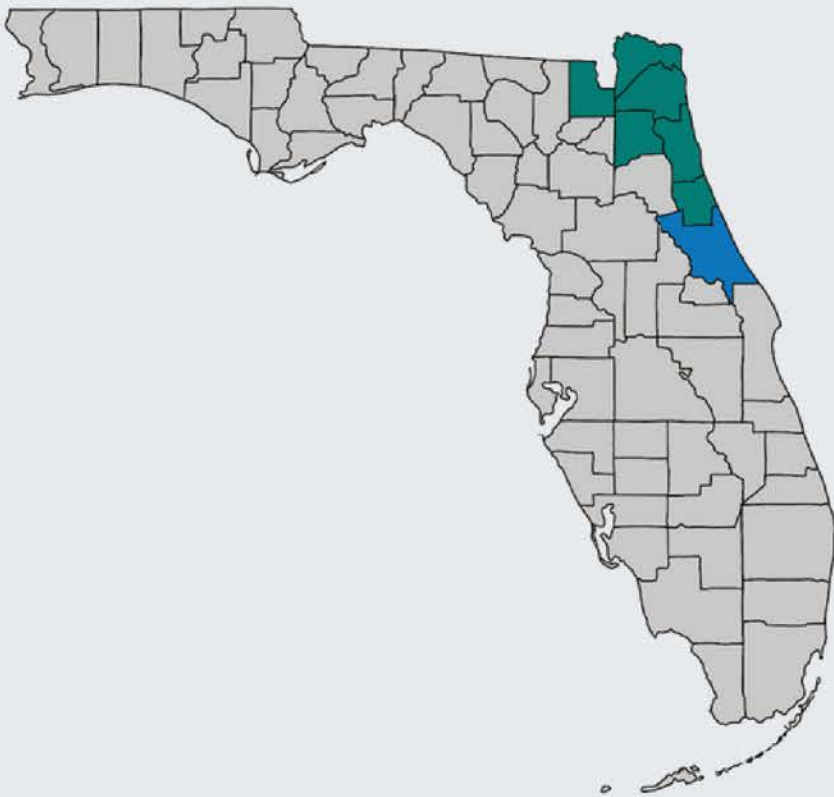
Overall Rankings	Health Outcomes: 40th out of 67 counties			
	Health Factors: 31st out of 67 counties			
Breakdown of Health Factors Rankings	HEALTH BEHAVIORS	CLINICAL CARE	SOCIO-ECONOMIC	PHYSICAL ENVIRONMENT
	Tobacco Diet and Exercise Alcohol Use High-Risk Sex	Access to Care Quality of Care	Education Employment Income Family/Social Support Community Safety	Air Quality Built Environment Access to Healthy Food Liquor Stores
	Volusia Rank: 33rd *declined from 2022	Volusia Rank: 19th *improved from 2022	Volusia Rank: 32nd *declined from 2022	Volusia Rank: 45th *declined from 2022

Data Source: Robert Wood Johnson Foundation (2023); retrieved from County Health Rankings and Roadmaps

NEIGHBORHOOD & BUILT ENVIRONMENT

Geography and Governance

Volusia County is on the east coast of Central Florida with 47 miles of Atlantic Ocean beaches with beachfront cities, including Daytona Beach, Ormond Beach, and New Smyrna Beach. It is bordered on the west by the St. Johns River, and the City of DeLand is the County seat. Water sports are plentiful, but Volusia's oceanfront communities are most famous for land sports. Volusia's beach's' hard-packed sand, gentle slope, and vast expanse were the perfect proving ground for early auto racing. Ormond Beach is known as the "Birthplace of Speed." Jackie Robinson Ballpark, located a mile from the beach, was the first place in Florida to allow Jackie Robinson to play in a game during 1946 Spring Training, a year before Jackie broke the color barrier in Major League baseball.



Total Households
228,569



Median Gross Rent
\$1,148



Total Affordable
Housing Units
3,192



Total Homeless
800



Percentage of
Sidewalks with Barriers
17%



Total Miles of
Bike Lanes
141



People Living Within
1/2 Mile of a Healthy
Food Source
19.6%



Nearby State
Parks
8



People Living Within
1/2 Mile of a Park
41.7%

Data Sources: U.S. Census Bureau, 2016-2021 American Community Survey 5-Year Estimates, DP03; U.S. Census Bureau, 2016-2021 American Community Survey 5-Year Estimates, DP04; Florida Department of Elder Affairs Profile of Older Adults, 2022; Florida Department of Environmental Protection, 2021; Florida Environmental Public Health Tracking, 2022; Florida Department of Children and Families, 2022

ECONOMIC STABILITY

Volusia County



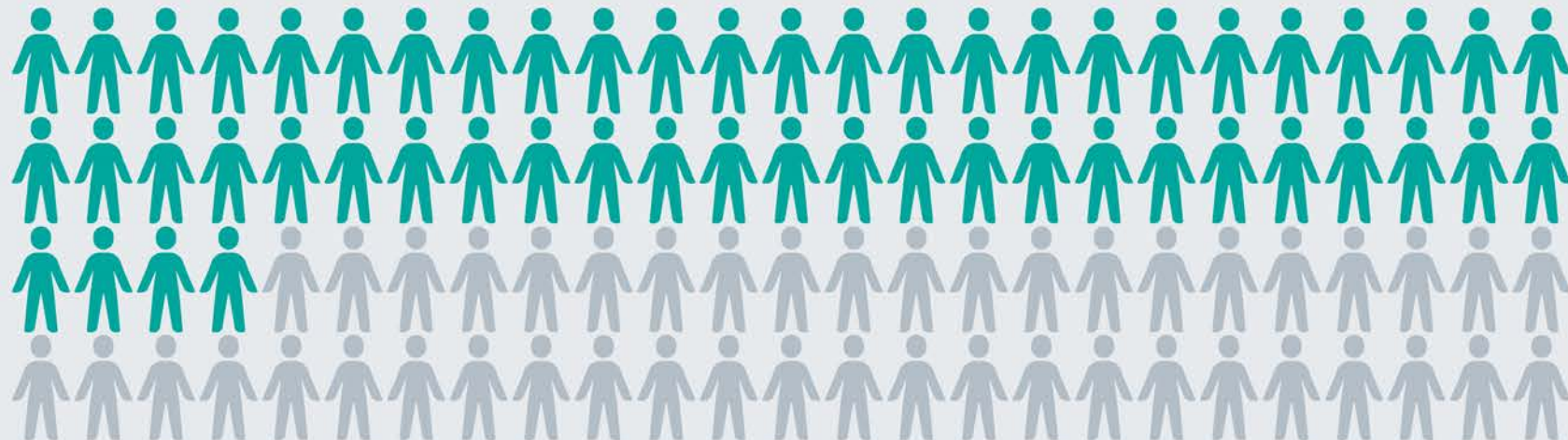
Per Capita Income
\$32,231



Median Household
Income
\$56,786



Unemployment Rate
4.2%



Population 16+ in Labor Force **54.1%**



Social Security
Benefit Recipients
127,205



Individuals Below
Poverty Level
69,394



Children in Foster
Care
804

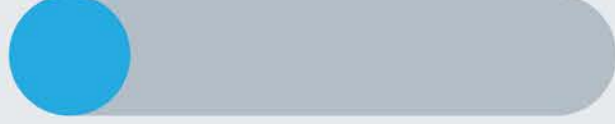
Florida



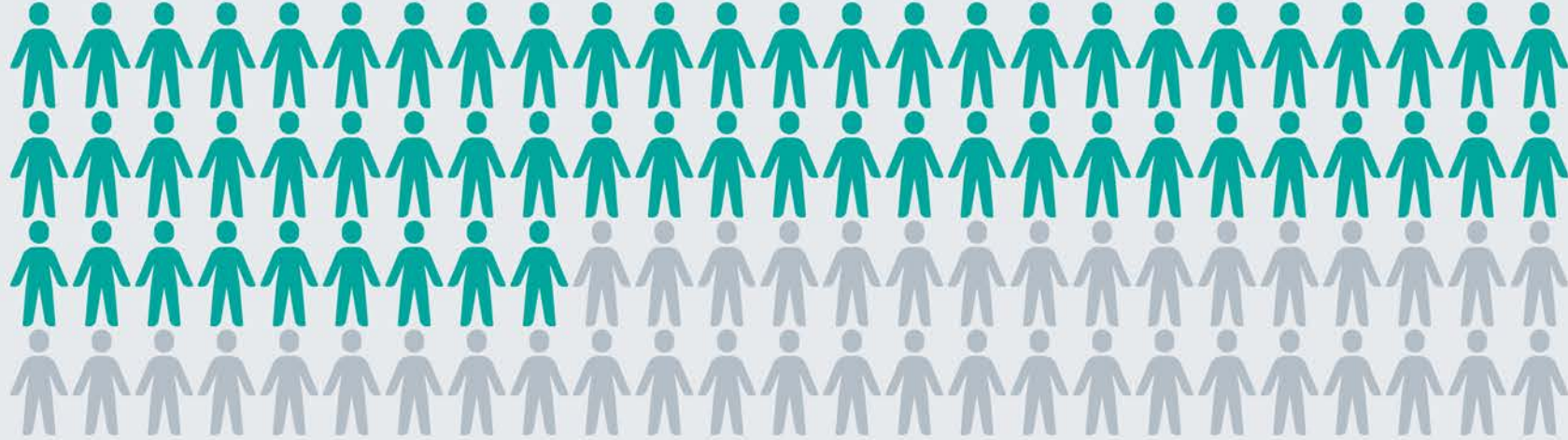
Per Capita Income
\$35,216



Median Household
Income
\$61,777



Unemployment Rate
5.3%



Population 16+ in Labor Force **59.4%**



Social Security
Benefit Recipients
3,829,655



Individuals Below
Poverty Level
2,744,612



Children in Foster
Care
25,475

EDUCATION ACCESS & QUALITY

Health Literacy

Health literacy is the degree to which individuals can obtain, process, and understand basic health information. Low health literacy is linked to poor health, higher rates of chronic disease, higher mortality rates.

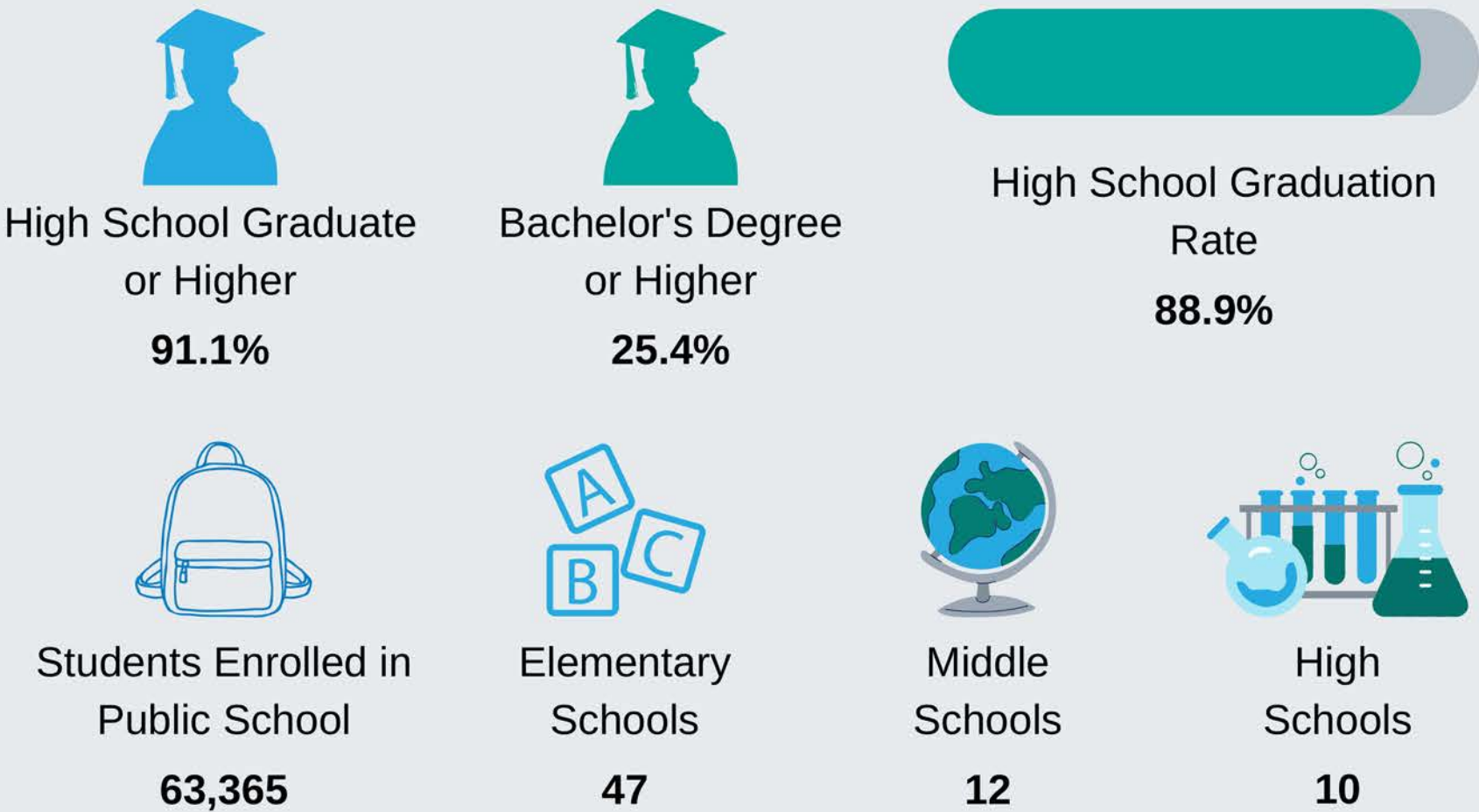
Health Insurance Literacy

Health insurance literacy is the ability to understand, choose, manage, and efficiently utilize health insurance plans. Health insurance literacy is crucial to affordable and effective healthcare decisions and outcomes.

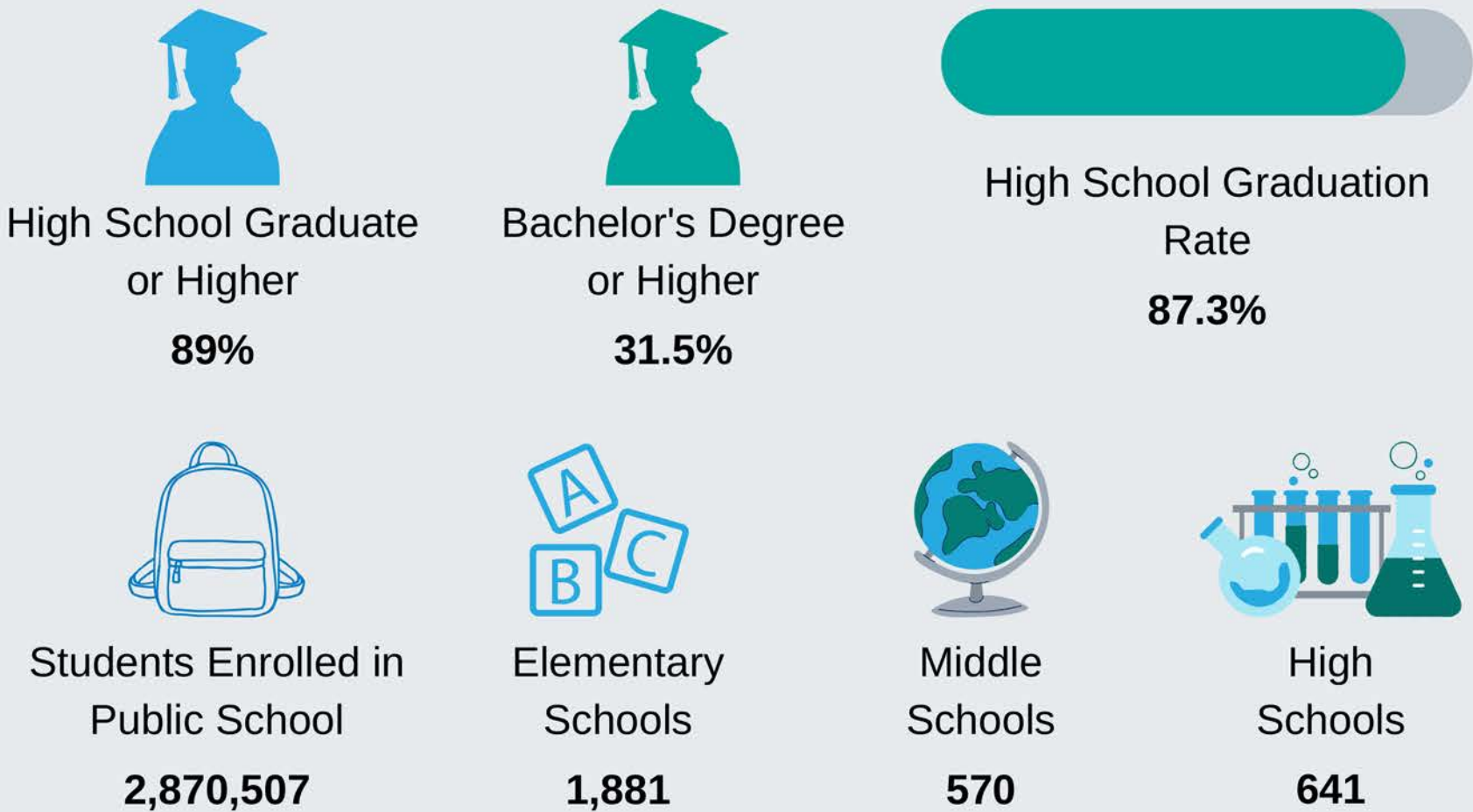
Digital Literacy

Digital literacy is the ability to use information and communication technologies to find, evaluate, create, and communicate information, requiring both cognitive and technical skills.

Volusia County



Florida



HEALTHCARE ACCESS & QUALITY

Volusia County

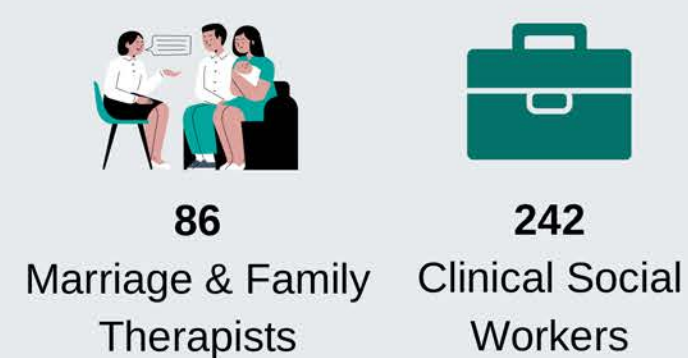
Florida

Licensed Providers

Licensed Mental Health Professionals

Licensed Providers

Licensed Mental Health Professionals

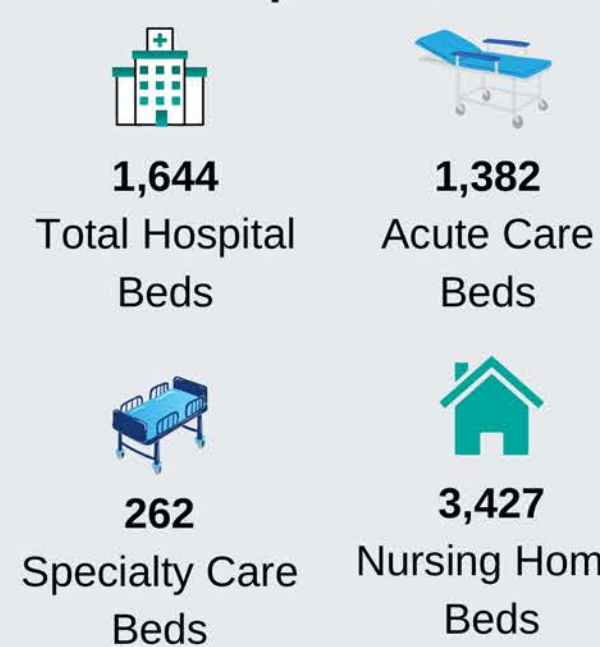


Number of Practicing Physicians



21.4% increase in the number of practicing physicians from 2013-14 to 2021-22

Hospital Beds

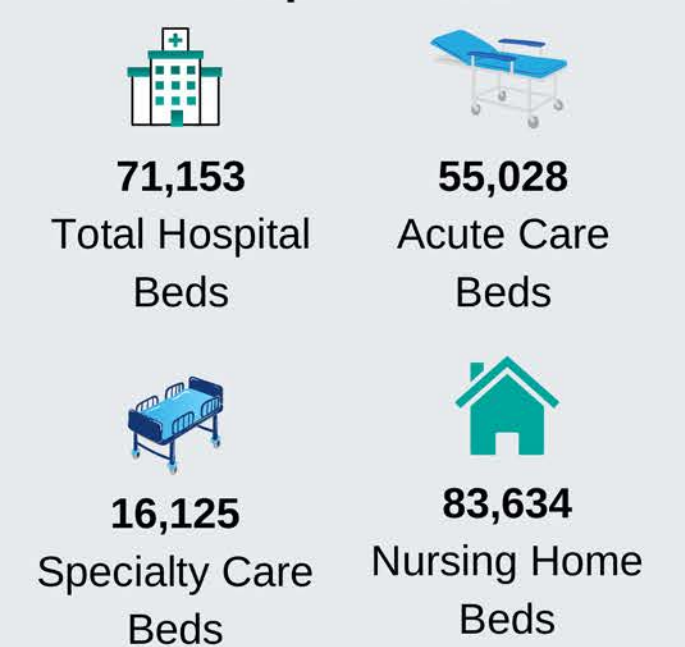


Number of Practicing Physicians



24.1% increase in the number of practicing physicians from 2013-14 to 2021-22

Hospital Beds





HEALTHCARE ACCESS & QUALITY

Health Insurance Coverage

	Volusia County		Florida	
	Estimate	Percent	Estimate	Percent
Total Population	543,070	-	21,027,201	-
With health insurance coverage	479,825	88.4%	18,369,975	87.4%
With private health insurance	341,016	62.8%	13,263,169	63.1%
With public coverage	226,282	41.7%	7,709,520	36.7%
No health insurance coverage	63,245	11.6%	2,657,226	12.6%

Health Professional Shortage Area (HPSA)

	Designation Status	Designation Type
 Primary Health Professional Shortage	Yes	Low Income Migrant Worker Population, Correctional Facility, Federally Qualified Health Center
 Dental Health Professional Shortage	Yes	Low Income Migrant Worker Population, Correctional Facility, Federally Qualified Health Center
 Mental Health Professional Shortage	Yes	Low Income Population, Correctional Facility, Federally Qualified Health Center

Medically Underserved Area (MUA)

MUA	Service Area Name	Designation Type
07094	Low Income / M F W - Volusia County	Medically Underserved Area

LEADING CAUSES OF DEATH

Volusia County



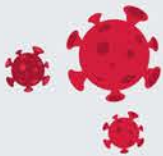
HEART DISEASE

Number of Deaths = 1,897
Percent of Deaths = 20.37%



CANCER

Number of Deaths = 1,655
Percent of Deaths = 17.77%



COVID-19

Number of Deaths = 1,137
Percent of Deaths = 12.21%



UNINTENTIONAL INJURY

Number of Deaths = 726
Percent of Deaths = 7.79%



STROKE

Number of Deaths = 539
Percent of Deaths = 5.79%

Florida



HEART DISEASE

Number of Deaths = 50,027
Percent of Deaths = 19.15%



CANCER

Number of Deaths = 46,889
Percent of Deaths = 17.95%



COVID-19

Number of Deaths = 34,490
Percent of Deaths = 13.20%



UNINTENTIONAL INJURY

Number of Deaths = 17,654
Percent of Deaths = 6.76%



STROKE

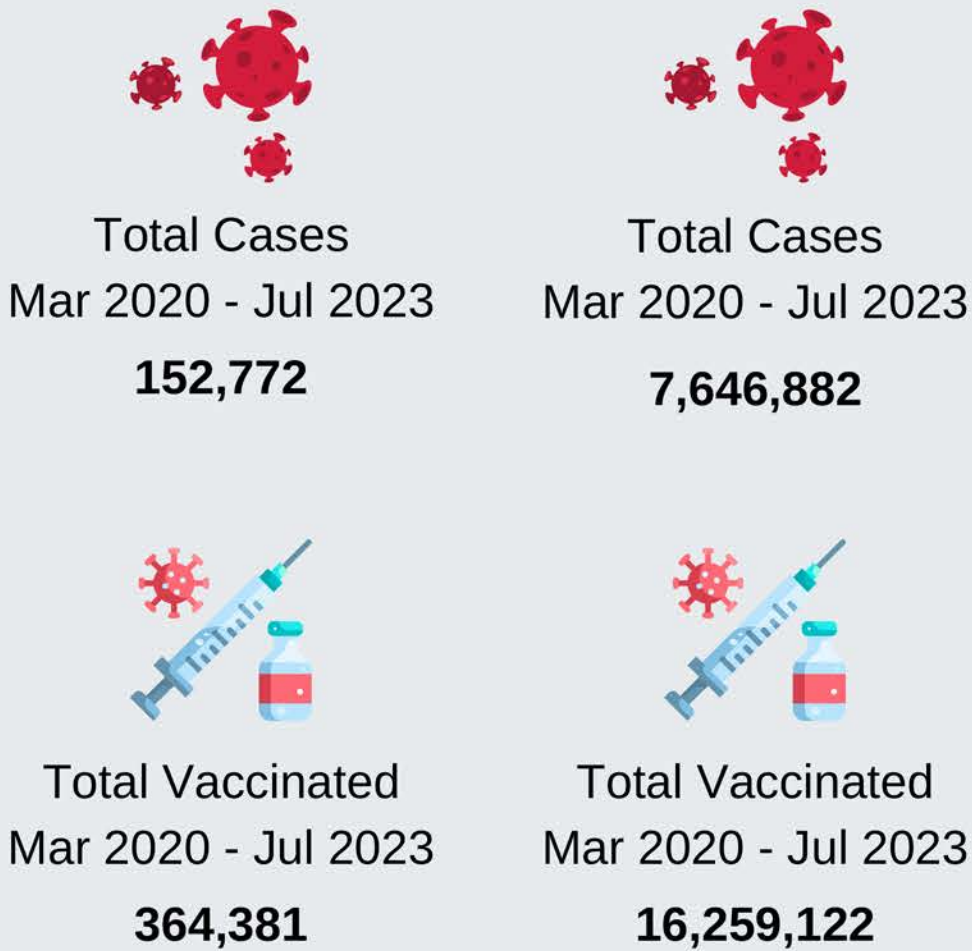
Number of Deaths = 15,567
Percent of Deaths = 5.96%

INFECTIOUS DISEASES

COVID-19 is the disease caused by SARS-CoV-2, the coronavirus that emerged in December 2019. It was declared a pandemic on March 11, 2020 and cases continue to occur. The coronavirus can be spread from person to person and the best way to protect yourself is to get vaccinated and boosted when you are eligible, follow testing guidelines, wear a mask, wash your hands and practice physical distancing.

Volusia County

Florida



Chlamydia is a common sexually transmitted infection (STI) caused by bacteria. Chlamydia affects mostly young women, but it can occur in both men and women and in all age groups.

Volusia County

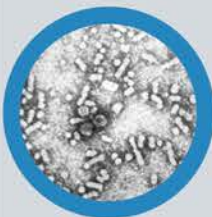
Florida

1,924 Cases	104,570 Cases
-------------	---------------



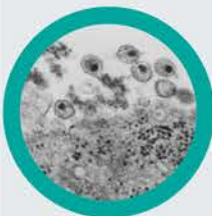
Infectious Syphilis is a bacterial infection usually spread by sexual contact. The disease starts as a painless sore — typically on the genitals, rectum or mouth. Syphilis spreads from person to person via skin or mucous membrane contact with these sores.

121 Cases	4,498 Cases
-----------	-------------



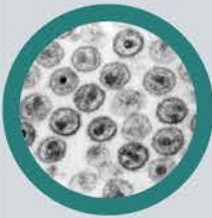
Hepatitis B (chronic) is a serious liver infection caused by the hepatitis B virus (HBV). For some people, hepatitis B infection becomes chronic, meaning it lasts more than six months. Having chronic hepatitis B increases your risk of developing liver failure, liver cancer or cirrhosis — a condition that permanently scars of the liver.

110 Cases	4,412 Cases
-----------	-------------



HIV is a sexually transmitted infection (STI). It can also be spread by contact with infected blood and from illicit injection drug use or sharing needles. It can also be spread from mother to child during pregnancy, childbirth or breastfeeding.

81 Cases	4,708 Cases
----------	-------------



Acquired Immunodeficiency Syndrome (AIDS) is a chronic, potentially life-threatening condition caused by the human immunodeficiency virus (HIV). By damaging your immune system, HIV interferes with your body's ability to fight infection and disease.

44 Cases	1,860 Cases
----------	-------------

MATERNAL & CHILD HEALTH

Volusia County



Total Births
4,903



Births to Teen Mothers
243



Births to Mothers 36+
622



C-Section Births
1,629



Mothers who Initiated
Breastfeeding
3,986



Births to Mothers who
Smoked during
Pregnancy
180

Florida



Total Births
216,189



Births to Teen Mothers
8,181



Births to Mothers 36+
34,906



C-Section Births
77,274



Mothers who Initiated
Breastfeeding
183,595



Births to Mothers who
Smoked during
Pregnancy
6,235

	Volusia County	Florida
	Estimate	Estimate
Maternal Deaths	2	85
Infant Deaths	26	1,267
White Infant Deaths	21	638
Black Infant Deaths	3	530
Hispanic Infant Deaths	5	329
Non-Hispanic Infant Deaths	20	908
Sudden Unexpected Infant Deaths (SUID)	6	207

SOCIAL & COMMUNITY CONTEXT

Volusia County



Individuals with
Disabilities
95,055



Veterans
49,434



Suicide Deaths
125



Hospitalizations for
Self-Harm Injuries
193



Adults with Good
Mental Health



Adults who Engage in
Heavy or Binge Drinking
19.6%



Substance Abuse Program
Enrollees
51 Children
235 Adults



Total Crime Index
10,956

*13.9% decrease
from 2019 to 2020

Crimes

Murder

16

Rape

160

Robbery

264

Aggravated Assault

1,578

Burglary

1,429

Larceny

6,727

Motor Vehicle Theft

772

Florida



Individuals with
Disabilities
2,818,838



Veterans
1,389,309



Suicide Deaths
3,325



Hospitalizations for
Self-Harm Injuries
7,637



Adults with Good
Mental Health



Adults who Engage in
Heavy or Binge Drinking
18.2%



Substance Abuse Program
Enrollees
7,458 Children
42,298 Adults



Total Crime Index
466,047

*13.9% decrease
from 2019 to 2020

Crimes

Murder

1,293

Rape

7,655

Robbery

13,514

Aggravated Assault

60,828

Burglary

52,089

Larceny

292,519

Motor Vehicle Theft

38,150