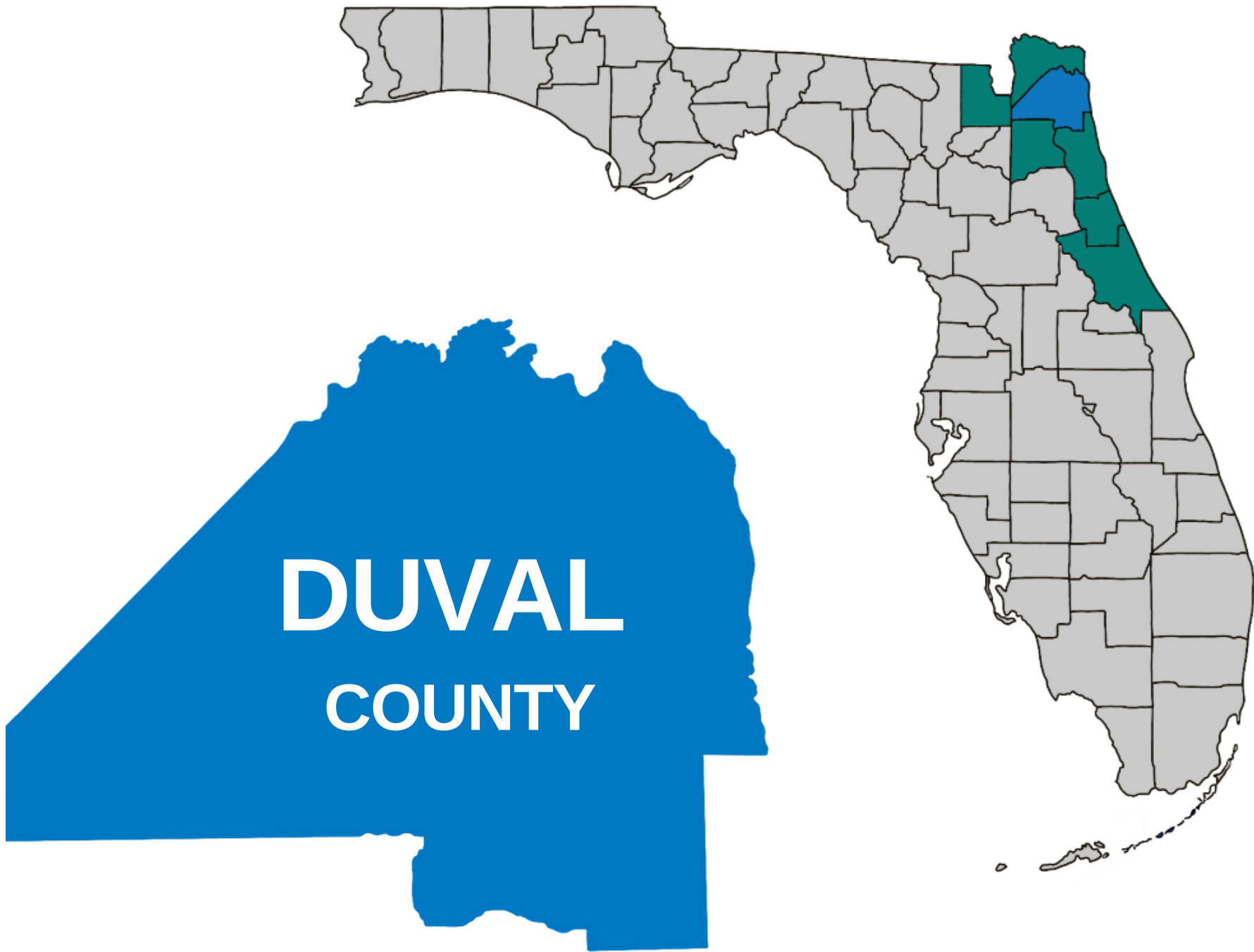




OUR VISION:

Northeast Florida will become the healthiest region in the state through evidence-based assessment, data, and planning.



Health Planning
Council OF NORTHEAST
FLORIDA



hpcnef.org



4201 Baymeadows Road, Suite 2
Jacksonville, Florida 32217



(904) 448-4300

COUNTY DEMOGRAPHICS

Population

Duval County



948,651

4.5% of Florida
Population

Florida



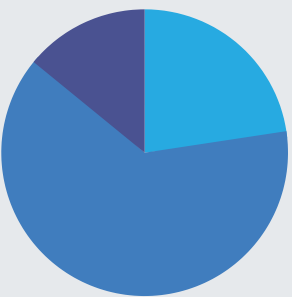
21,216,924

Data Source: U.S. Census Bureau, 2016-2020 American Community Survey 5-Year Estimates, DP05

Age Groups

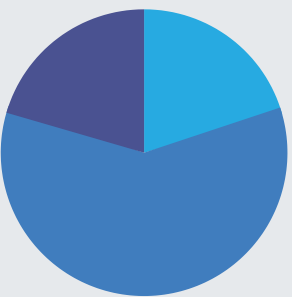
Duval County

	Estimate	Percent
Under 18	214,225	22.6%
18 - 64	600,937	63.3%
65+	133,489	14.1%



Florida

	Estimate	Percent
Under 18	4,214,444	19.9%
18 - 64	12,654,568	59.6%
65+	4,347,912	20.5%



Data Source: U.S. Census Bureau, 2016-2020 American Community Survey 5-Year Estimates, S0101

Gender

Duval County



51.5%

488,731 Females



48.5%

459,920 Males

Florida



51.1%

10,842,330 Females



48.9%

10,374,594 Males

Data Source: U.S. Census Bureau, 2016-2020 American Community Survey 5-Year Estimates, DP05

Race / Ethnicity

Duval County

Florida

	Estimate	Percent	Estimate	Percent
One Race	900,396	94.9%	19,939,907	94.0%
White	549,432	57.9%	15,199,588	71.6%
Black or African American	280,209	29.5%	3,381,061	15.9%
American Indian & Alaskan Native	2,136	0.2%	55,655	0.3%
Asian	44,378	4.7%	590,668	2.8%
Native Hawaiian & Other Pacific Islander	629	0.1%	13,339	0.1%
Some other race	23,612	2.5%	699,596	3.3%
Two or more races	48,255	5.1%	1,277,017	6.0%
Hispanic or Latino (of any race)	96,743	10.2%	5,468,826	25.8%

Data Source: U.S. Census Bureau, 2016-2020 American Community Survey 5-Year Estimates, DP05

COUNTY HEALTH RANKINGS, DUVAL COUNTY, 2022

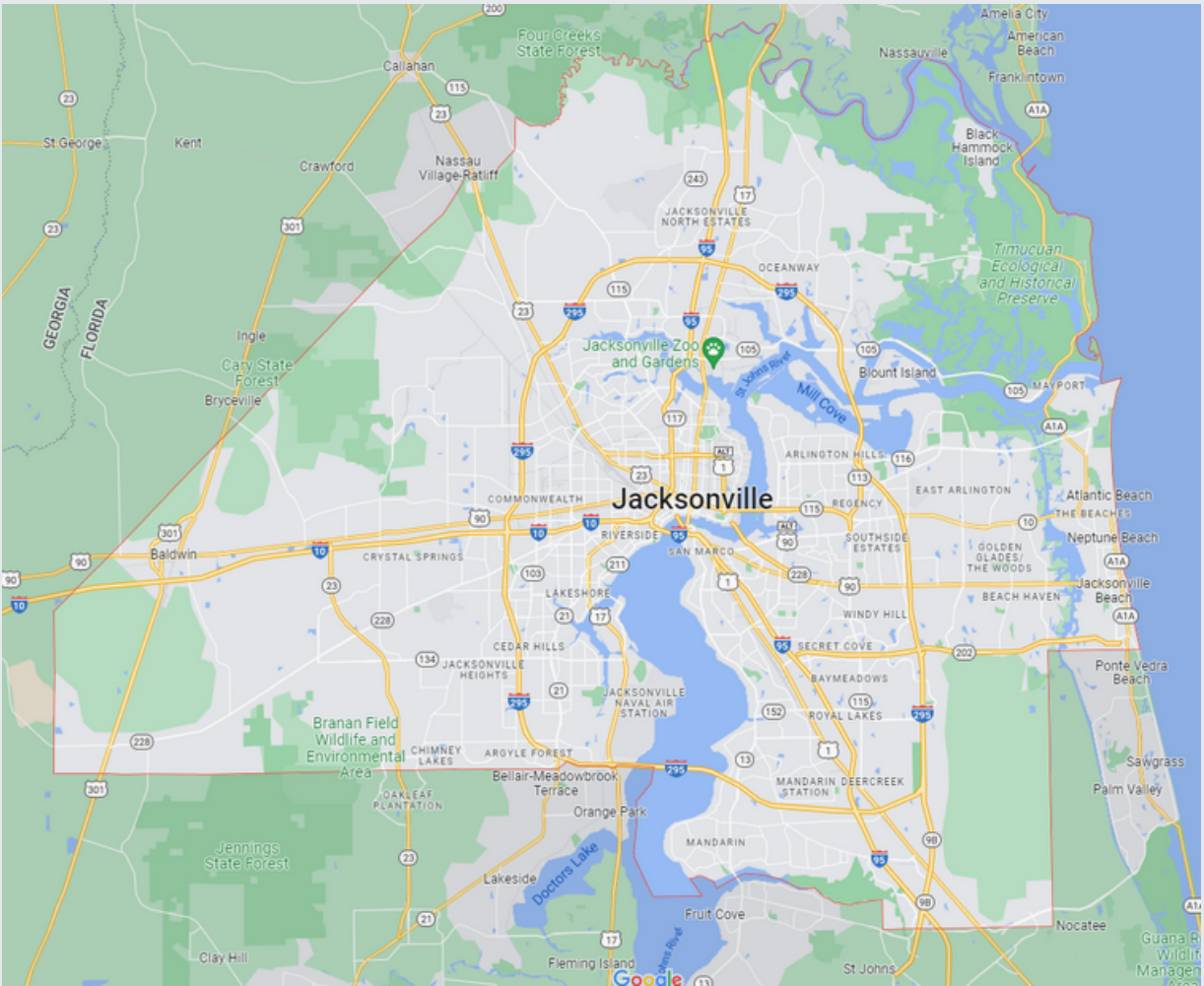
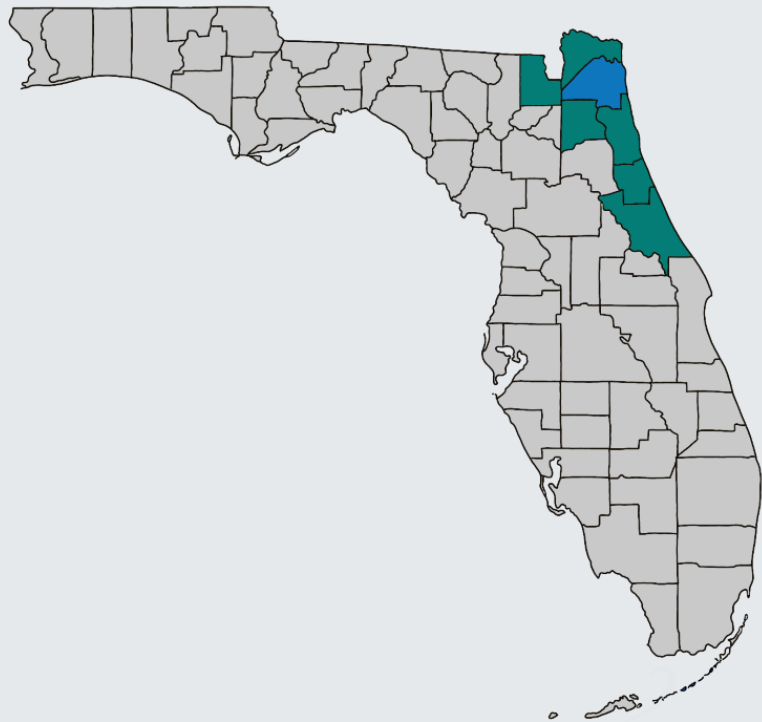
Overall Rankings	Health Outcomes: 45th out of 67 counties			
	Health Factors: 32nd out of 67 counties			
Breakdown of Health Factors Rankings	HEALTH BEHAVIORS	CLINICAL CARE	SOCIO-ECONOMIC	PHYSICAL ENVIRONMENT
	Tobacco Diet and Exercise Alcohol Use High-Risk Sex	Access to Care Quality of Care	Education Employment Income Family/Social Support Community Safety	Air Quality Built Environment Access to Healthy Food Liquor Stores
	Duval Rank: 35th *declined from 2021	Duval Rank: 19th *declined from 2021	Duval Rank: 33rd *declined from 2021	Duval Rank: 48th *declined from 2021

Data Source: Robert Wood Johnson Foundation (2022); retrieved from County Health Rankings and Roadmaps: <https://www.countyhealthrankings.org/>

NEIGHBORHOOD & BUILT ENVIRONMENT

Geography and Governance

Duval County is a consolidated city-county government located on the northeast coast of Florida. It includes the cities of Jacksonville, Baldwin, and the beach communities of Jacksonville Beach, Neptune Beach, and Atlantic Beach. Jacksonville is the largest city geographically in the contiguous forty-eight states, and Duval County has a land area of over 800 square miles. Urban, suburban, and pockets of rural areas comprise the geographic make-up of Duval County. On October 1, 1968, the government of Duval County was merged with the government of the City of Jacksonville. However, the Duval County cities of Atlantic Beach, Baldwin, Jacksonville Beach, and Neptune Beach are not included in the corporate limits of Jacksonville.



Total Households
369,704



Median Gross Rent
\$1,096



Total Affordable
Housing Units
7,042



Total Homeless
1,137



Percentage of
Sidewalks with Barriers
31%



Total Miles of
Bike Lanes
282



People Living Within
1/2 Mile of a Healthy
Food Source
25.3%



Nearby State
Parks
6



People Living Within
1/2 Mile of a Park
40.1%

ECONOMIC STABILITY

Duval County



Per Capita Income
\$32,233



Median Household
Income
\$56,769



Unemployment Rate
5.3%



Population 16+ in Labor Force **66.0%**



Social Security
Benefit Recipients
47,495



Individuals Below
Poverty Level
134,680



Children in Foster
Care
1,241

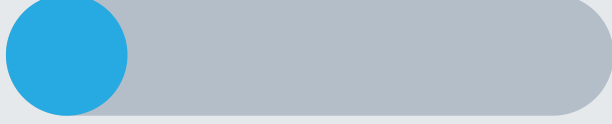
Florida



Per Capita Income
\$32,848



Median Household
Income
\$57,703



Unemployment Rate
5.4%



Population 16+ in Labor Force **58.9%**



Social Security
Benefit Recipients
3,622,600



Individuals Below
Poverty Level
2,772,939



Children in Foster
Care
23,517

EDUCATION ACCESS & QUALITY

Health Literacy

Health literacy is the degree to which individuals can obtain, process, and understand basic health information. Low health literacy is linked to poor health, higher rates of chronic disease, and higher mortality rates.

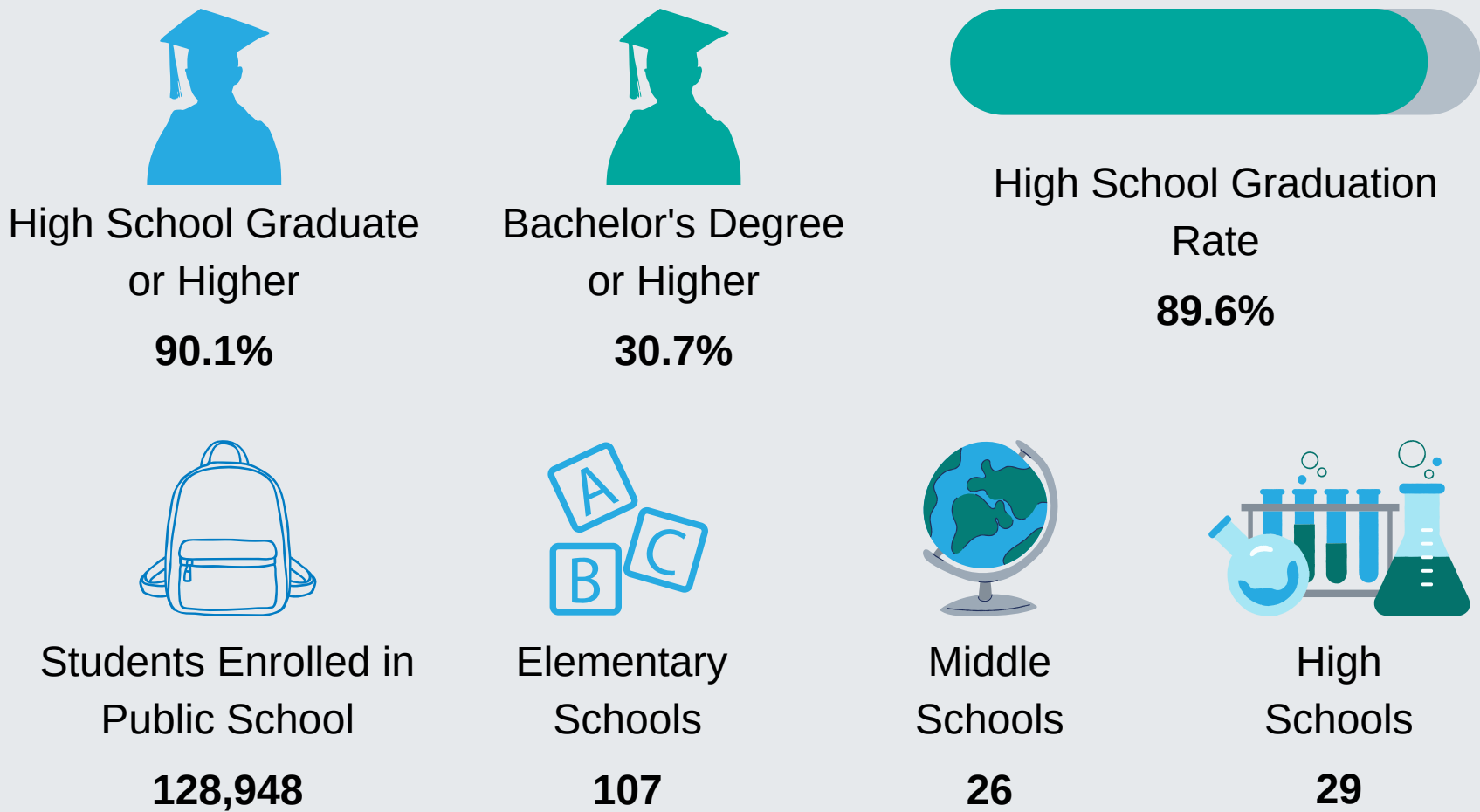
Health Insurance Literacy

Health insurance literacy is the ability to understand, choose, manage, and efficiently utilize health insurance plans. Health insurance literacy is crucial to affordable and effective healthcare decisions and outcomes.

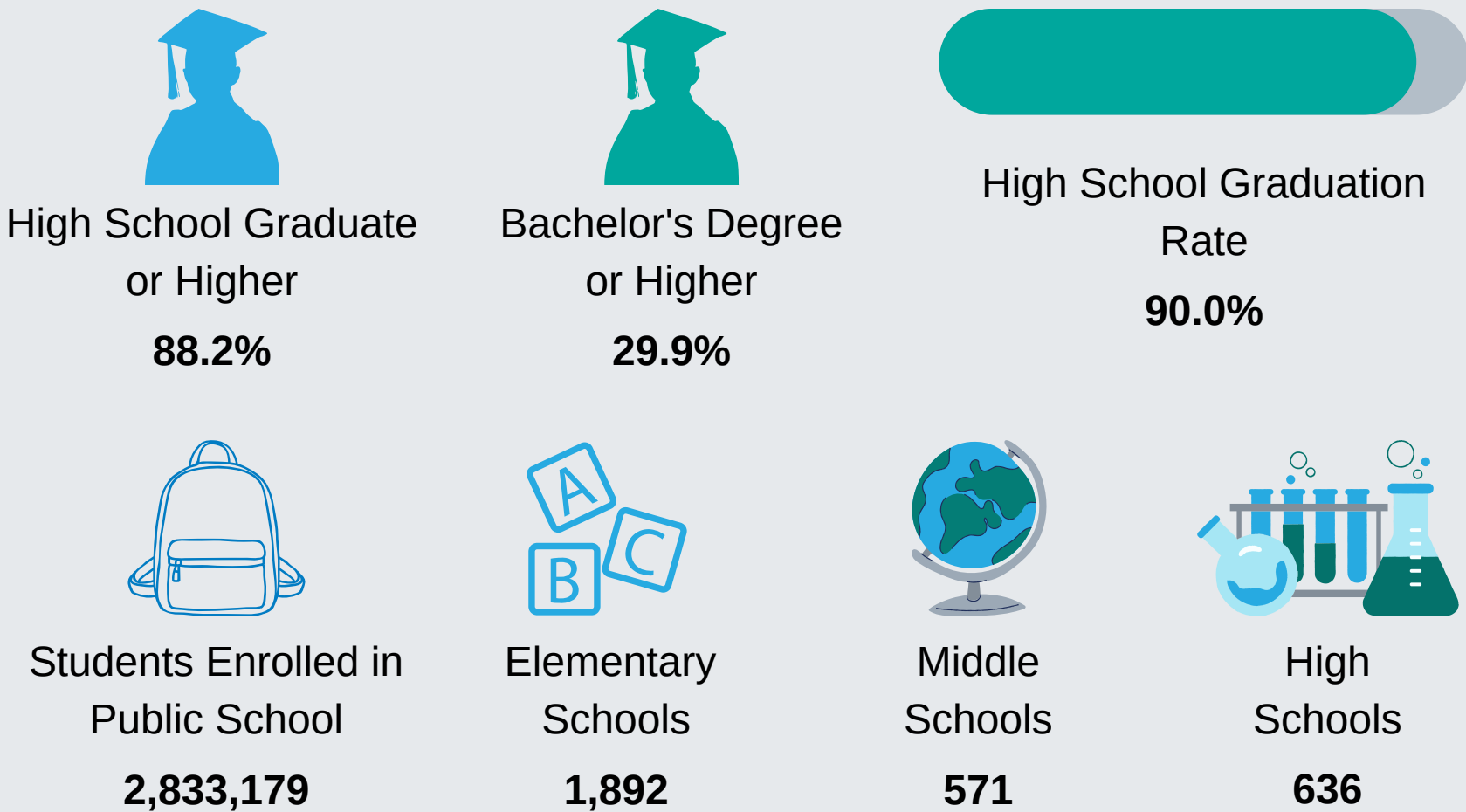
Digital Literacy

Digital literacy is the ability to use information and communication technologies to find, evaluate, create, and communicate information, requiring both cognitive and technical skills.

Duval County



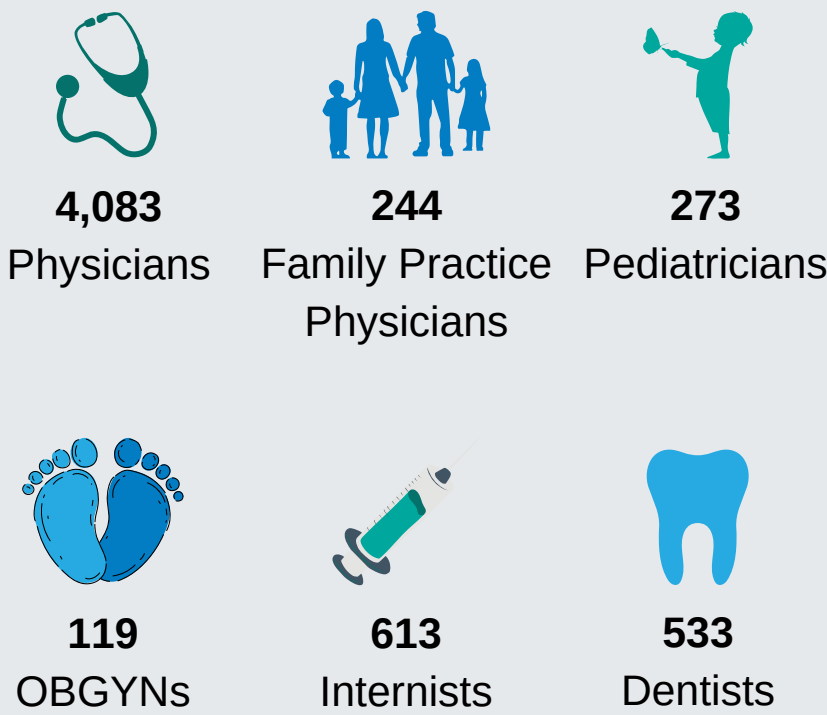
Florida



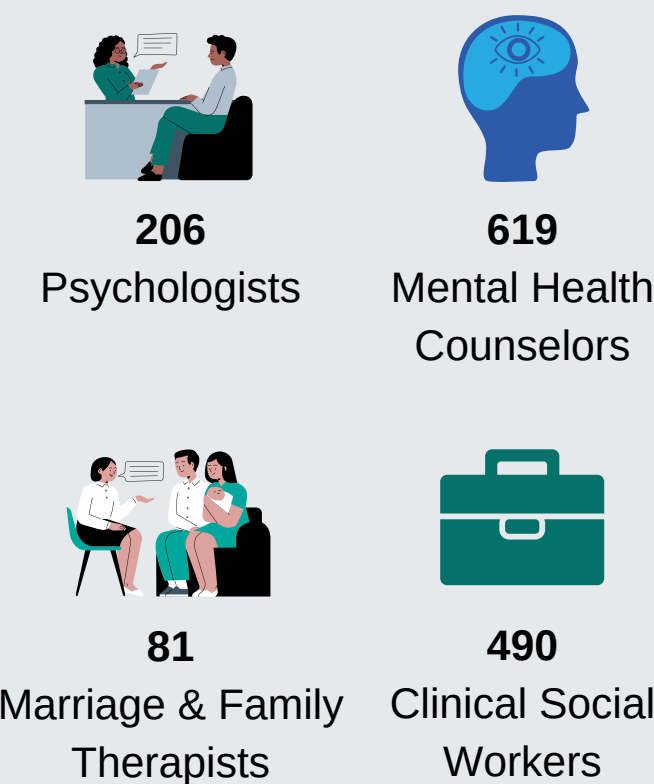
HEALTHCARE ACCESS & QUALITY

Duval County

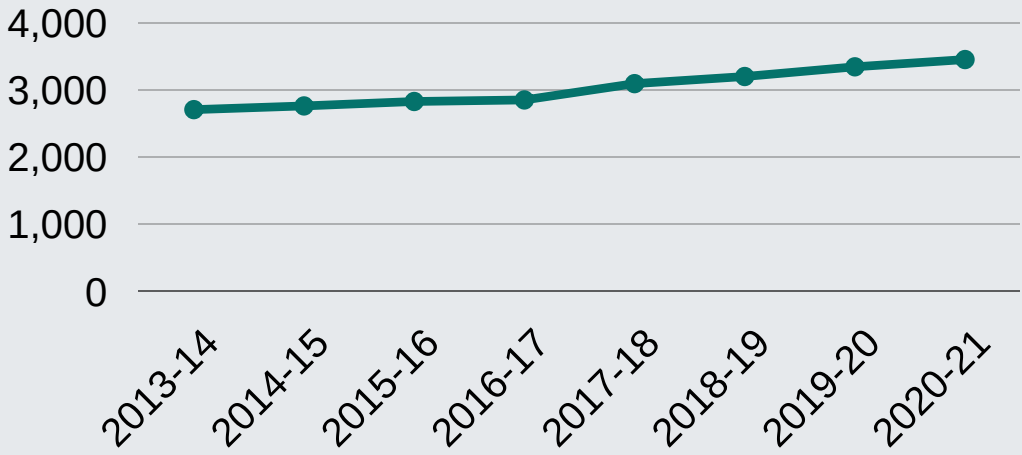
Licensed Providers



Licensed Mental Health Professionals

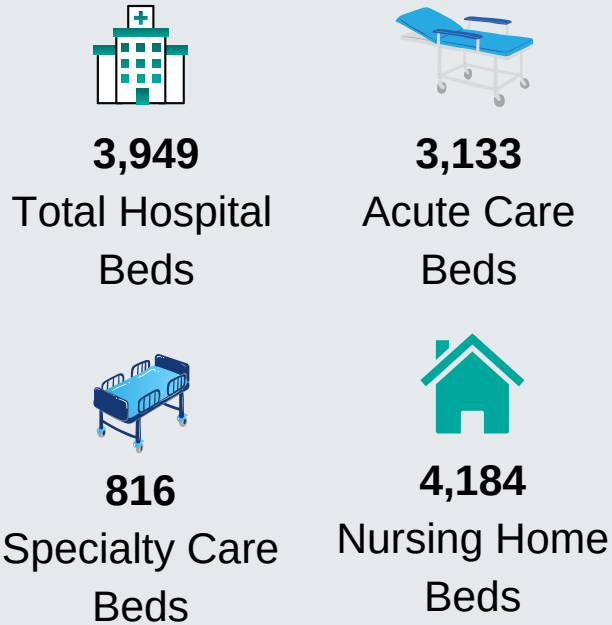


Number of Practicing Physicians



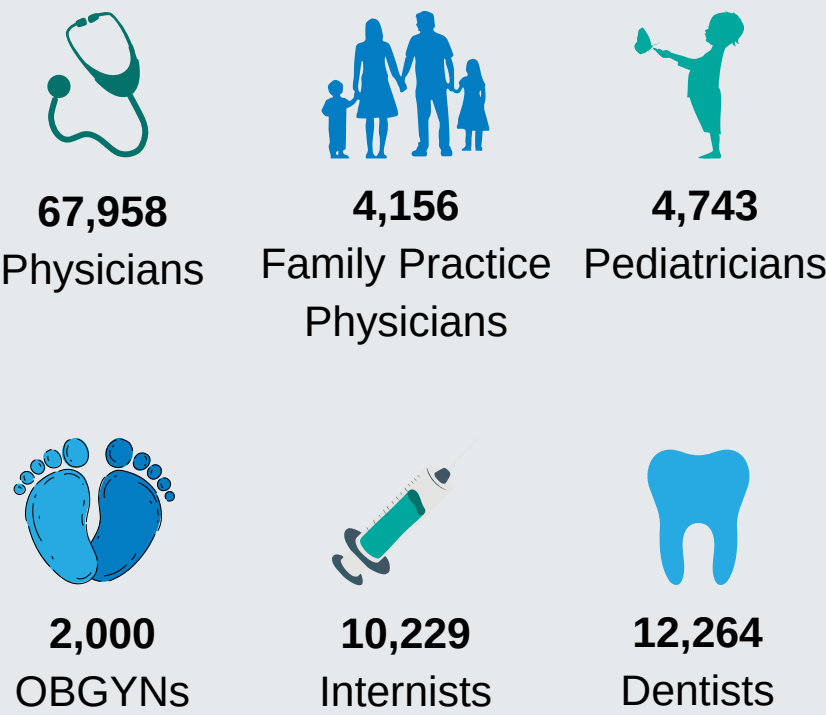
27.5% increase in the number of practicing physicians from 2013-14 to 2020-21

Hospital Beds

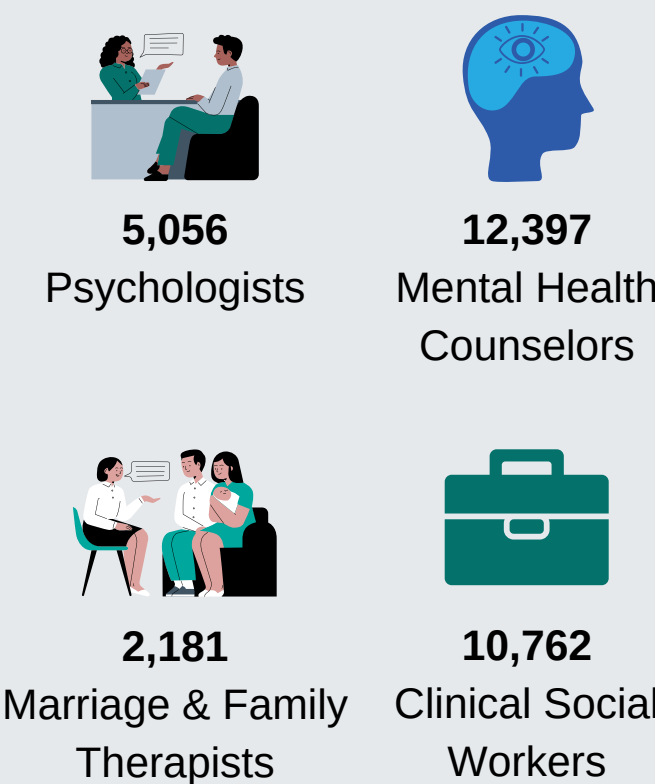


Florida

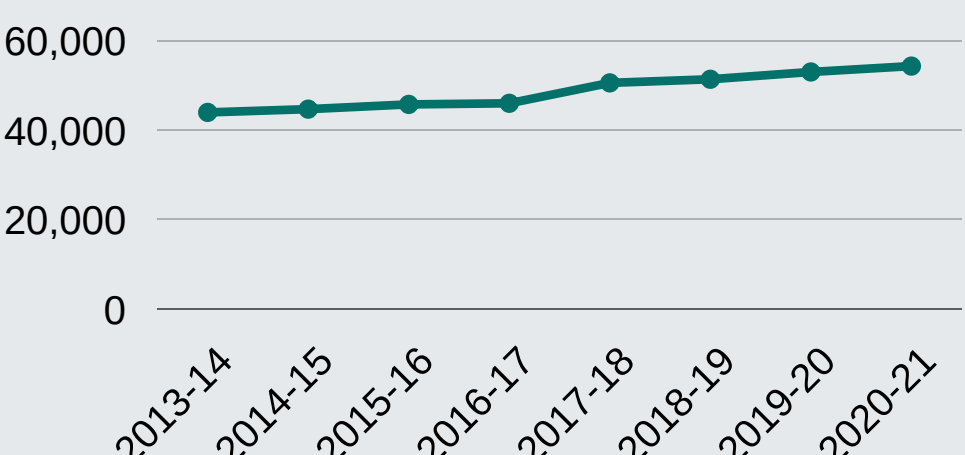
Licensed Providers



Licensed Mental Health Professionals

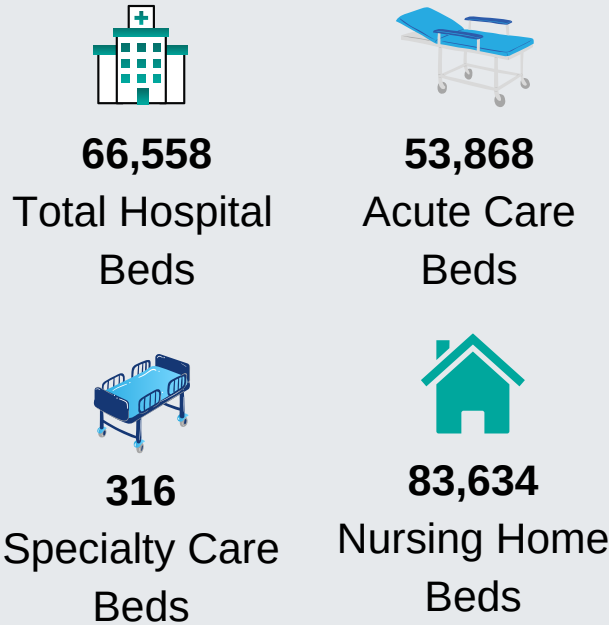


Number of Practicing Physicians



11.9% increase in the number of practicing physicians from 2013-14 to 2020-21

Hospital Beds






HEALTHCARE ACCESS & QUALITY

Health Insurance Coverage

	Duval County		Florida	
	Estimate	Percent	Estimate	Percent
Total Population	926,348	-	20,897,188	-
With health insurance coverage	817,081	88.2%	18,250,257	87.3%
With private health insurance	604,508	65.3%	13,150,816	62.9%
With public coverage	310,767	33.5%	7,710,771	36.9%
No health insurance coverage	109,267	11.8%	2,646,931	12.7%

Health Professional Shortage Area (HPSA)

	Designation Status	Designation Type
 Primary Health Professional Shortage	Yes	Low Income Population, Federally Qualified Health Center
 Dental Health Professional Shortage	Yes	Low Income Population, Federally Qualified Health Center
 Mental Health Professional Shortage	Yes	Low Income Population, Federally Qualified Health Center

Medically Underserved Area (MUA)

MUA	Service Area Name	Designation Type
00585	Duval Service Area	Medically Underserved Area
00595	Duval Service Area	Medically Underserved Area
00596	Duval Service Area	Medically Underserved Area
00597	Duval Service Area	Medically Underserved Area
06213	Low Income - North Jacksonville	MUP Low Income

LEADING CAUSES OF DEATH

Duval County



HEART DISEASE

Number of Deaths = 1,881
Percent of Deaths = 18.57%



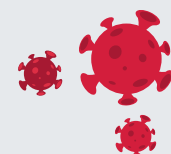
CANCER

Number of Deaths = 1,784
Percent of Deaths = 17.62%



UNINTENTIONAL INJURY

Number of Deaths = 926
Percent of Deaths = 9.14%



COVID-19

Number of Deaths = 708
Percent of Deaths = 6.99%



STROKE

Number of Deaths = 599
Percent of Deaths = 5.91%

Florida



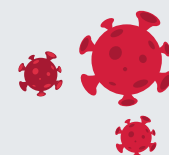
HEART DISEASE

Number of Deaths = 49,208
Percent of Deaths = 20.56%



CANCER

Number of Deaths = 45,723
Percent of Deaths = 19.10%



COVID-19

Number of Deaths = 19,157
Percent of Deaths = 8.00%



UNINTENTIONAL INJURY

Number of Deaths = 15,987
Percent of Deaths = 6.68%



STROKE

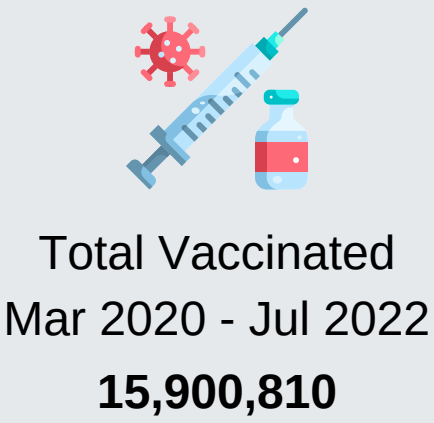
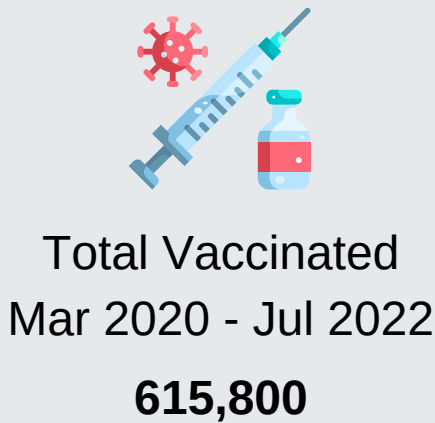
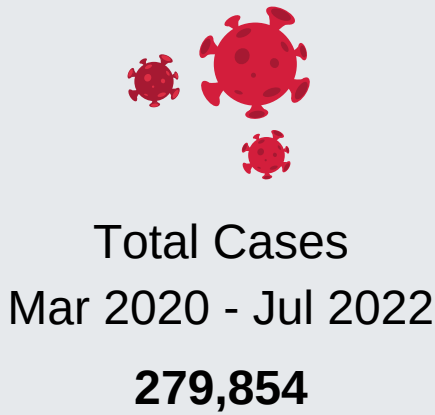
Number of Deaths = 15,356
Percent of Deaths = 6.41%

INFECTIOUS DISEASES

COVID-19 is the disease caused by SARS-CoV-2, the coronavirus that emerged in December 2019. It was declared a pandemic on March 11, 2020 and cases continue to occur. The coronavirus can be spread from person to person and the best way to protect yourself is to get vaccinated and boosted when you are eligible, follow testing guidelines, wear a mask, wash your hands and practice physical distancing.

Duval County

Florida



Chlamydia is a common sexually transmitted infection (STI) caused by bacteria. Chlamydia affects mostly young women, but it can occur in both men and women and in all age groups.

Duval County

7,838 Cases

Florida

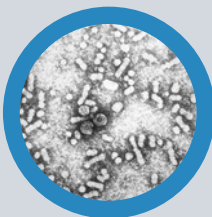
99,229 Cases



Infectious Syphilis is a bacterial infection usually spread by sexual contact. The disease starts as a painless sore — typically on the genitals, rectum or mouth. Syphilis spreads from person to person via skin or mucous membrane contact with these sores.

229 Cases

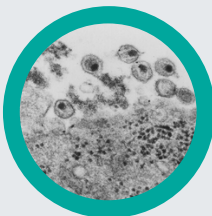
3,499 Cases



Hepatitis B (chronic) is a serious liver infection caused by the hepatitis B virus (HBV). For some people, hepatitis B infection becomes chronic, meaning it lasts more than six months. Having chronic hepatitis B increases your risk of developing liver failure, liver cancer or cirrhosis — a condition that permanently scars of the liver.

233 Cases

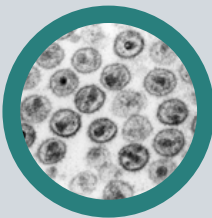
4,061 Cases



HIV is a sexually transmitted infection (STI). It can also be spread by contact with infected blood and from illicit injection drug use or sharing needles. It can also be spread from mother to child during pregnancy, childbirth or breastfeeding.

238 Cases

3,504 Cases



Acquired Immunodeficiency Syndrome (AIDS) is a chronic, potentially life-threatening condition caused by the human immunodeficiency virus (HIV). By damaging your immune system, HIV interferes with your body's ability to fight infection and disease.

107 Cases

1,581 Cases

Data Source: Florida Department of Health COVID-19 Outbreak data from March 1, 2020 to July 14, 2022; Florida Department of Health, Bureau of Communicable Diseases

MATERNAL & CHILD HEALTH

Duval County



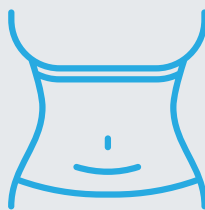
Total Births
12,490



Births to Teen Mothers
610



Births to Mothers 36+
1,590



C-Section Births
4,019



Mothers who Initiated
Breastfeeding
10,166



Births to Mothers who
Smoked during
Pregnancy
523

Florida



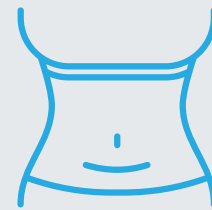
Total Births
209,645



Births to Teen Mothers
8,918



Births to Mothers 36+
32,761



C-Section Births
75,158



Mothers who Initiated
Breastfeeding
179,098



Births to Mothers who
Smoked during
Pregnancy
7,763

	Duval County	Florida
	Estimate	Estimate
Maternal Deaths	1	28
Infant Deaths	98	1,213
White Infant Deaths	31	627
Black Infant Deaths	60	491
Hispanic Infant Deaths	12	309
Non-Hispanic Infant Deaths	82	870
Sudden Unexpected Infant Deaths (SUID)	24	207

SOCIAL & COMMUNITY CONTEXT

Duval County



Individuals with
Disabilities
119,076



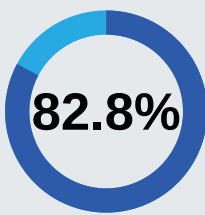
Veterans
83,096



Suicide Deaths
158



Hospitalizations for
Self-Harm Injuries
465



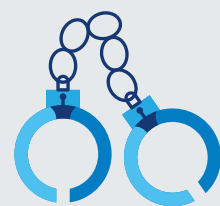
Adults with Good
Mental Health



Adults who Engage in
Heavy or Binge Drinking
17.9%



Substance Abuse Program
Enrollees
179 Children
1,393 Adults



Total Crime Index
34,452

*8.6% decrease from
2019 to 2020

Crimes	Count
Murder	143
Rape	477
Robbery	961
Aggravated Assault	5,074
Burglary	4,021
Larceny	20,655
Motor Vehicle Theft	3,121

Florida



Individuals with
Disabilities
2,840,938



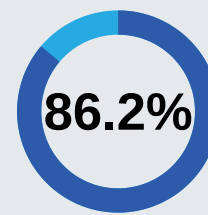
Veterans
1,416,472



Suicide Deaths
3,113



Hospitalizations for
Self-Harm Injuries
7,698



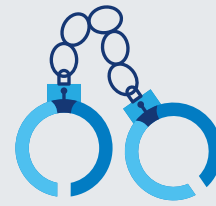
Adults with Good
Mental Health



Adults who Engage in
Heavy or Binge Drinking
18%



Substance Abuse Program
Enrollees
7,458 Children
42,298 Adults



Total Crime Index
464,805

*14.1% decrease
from 2019 to 2020

Crimes	Count
Murder	1,285
Rape	7,650
Robbery	13,439
Aggravated Assault	60,567
Burglary	51,928
Larceny	291,923
Motor Vehicle Theft	38,013