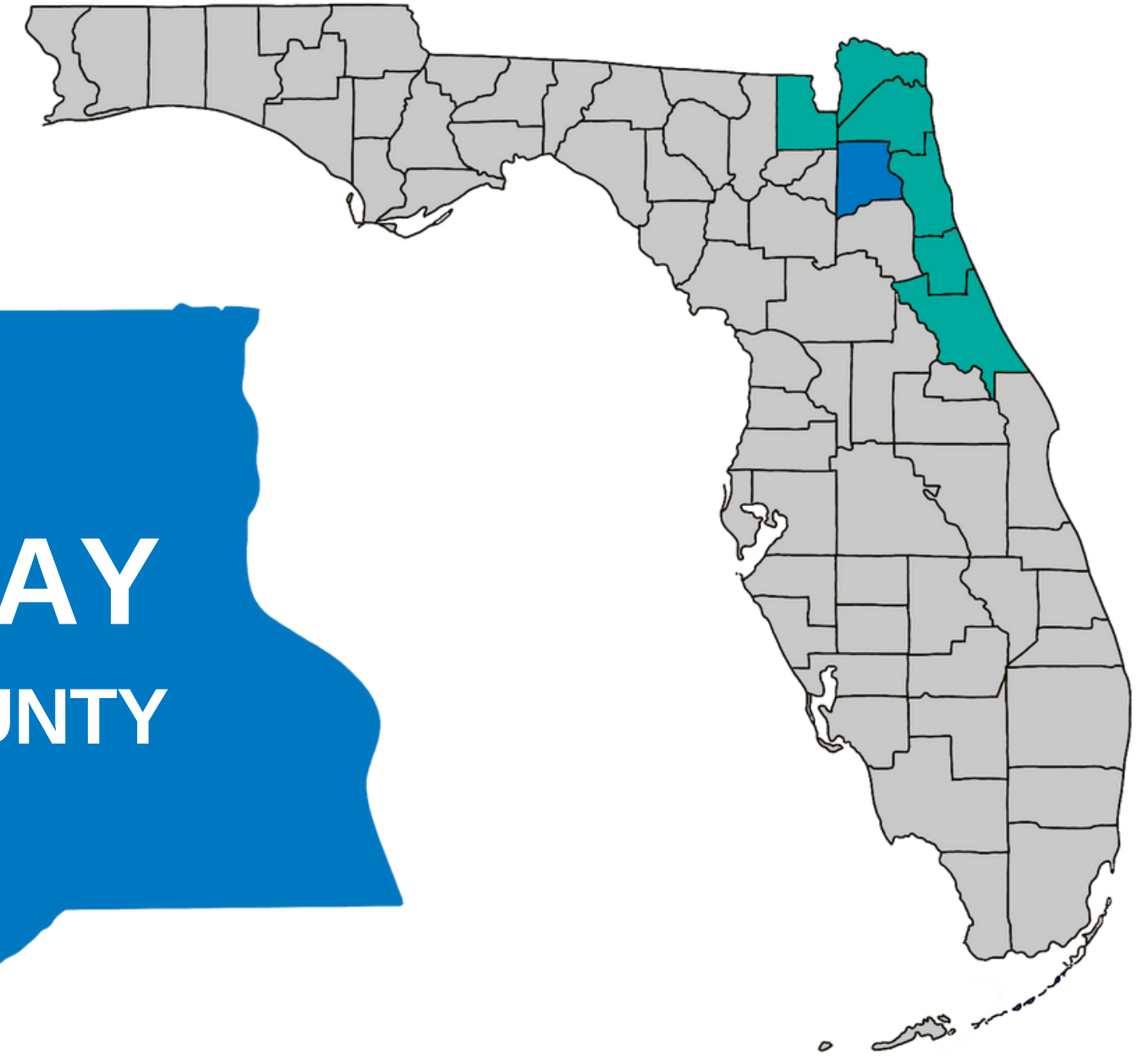





## OUR VISION:


Northeast Florida will become the healthiest region in the state through evidence-based assessment, data, and planning.



Health Planning  
Council OF NORTHEAST  
FLORIDA

 [hpcnef.org](http://hpcnef.org)

 4201 Baymeadows Road, Suite 2  
Jacksonville, Florida 32217

 (904) 448-4300

# COUNTY DEMOGRAPHICS

## Population

### Clay County



216,308

1% of Florida Population

### Florida

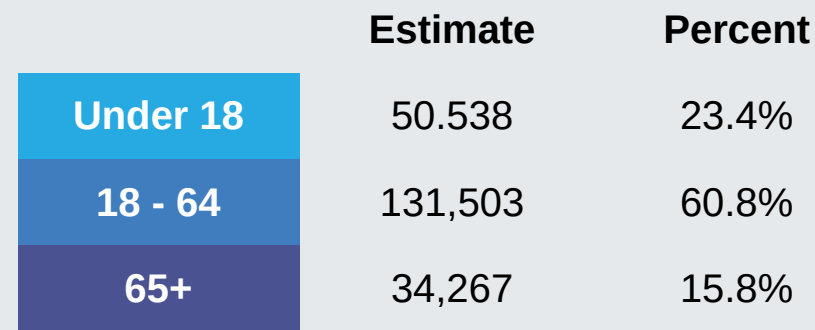


21,339,762

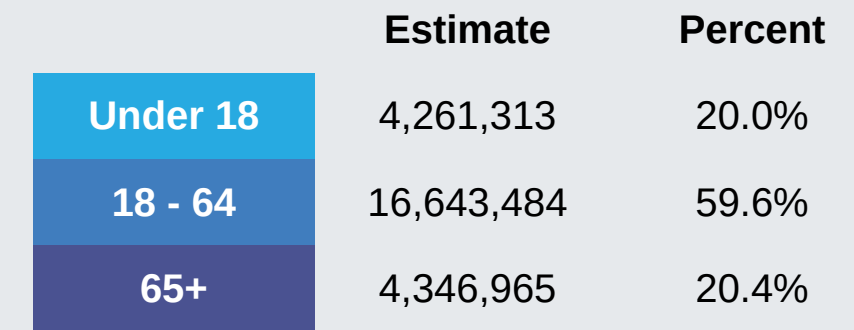
*Data Source: U.S. Census Bureau, 2017-2021 American Community Survey 5-Year Estimates, DP05*

## Age Groups

### Clay County



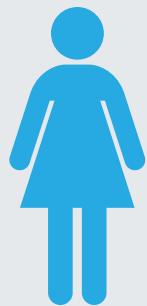
### Florida



*Data Source: U.S. Census Bureau, 2017-2021 American Community Survey 5-Year Estimates, S0101*

## Gender

### Clay County



50.5%

109,315 Females



49.5%

106,993 Males

### Florida



50.8%

10,850,214 Females



49.2%

10,489,548 Males

*Data Source: U.S. Census Bureau, 2017-2021 American Community Survey 5-Year Estimates, DP05*

## Race / Ethnicity

### Clay County

### Florida

	Estimate	Percent	Estimate	Percent
<b>One Race</b>	200,456	92.7%	19,338,037	90.6%
<b>White</b>	162,749	75.2%	14,449,017	67.7%
<b>Black or African American</b>	23,819	11.0%	3,358,469	15.7%
<b>American Indian &amp; Alaskan Native</b>	320	0.1%	54,466	0.3%
<b>Asian</b>	6,263	2.9%	596,862	2.8%
<b>Native Hawaiian &amp; Other Pacific Islander</b>	46	0.0%	13,065	0.1%
<b>Some other race</b>	7,259	3.4%	866,158	4.1%
<b>Two or more races</b>	15,852	7.3%	2,001,725	9.4%
<b>Hispanic or Latino (of any race)</b>	22,737	10.5%	5,593,090	26.2%

*Data Source: U.S. Census Bureau, 2017-2021 American Community Survey 5-Year Estimates, DP05*

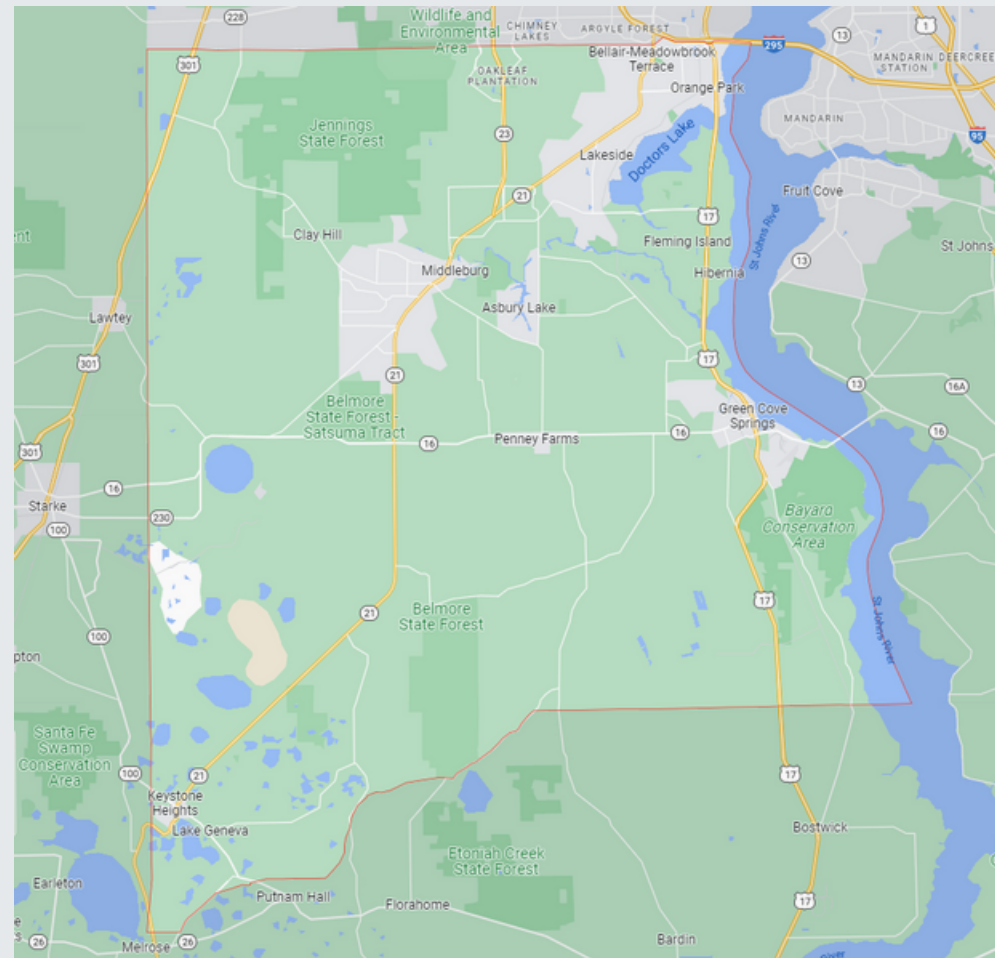
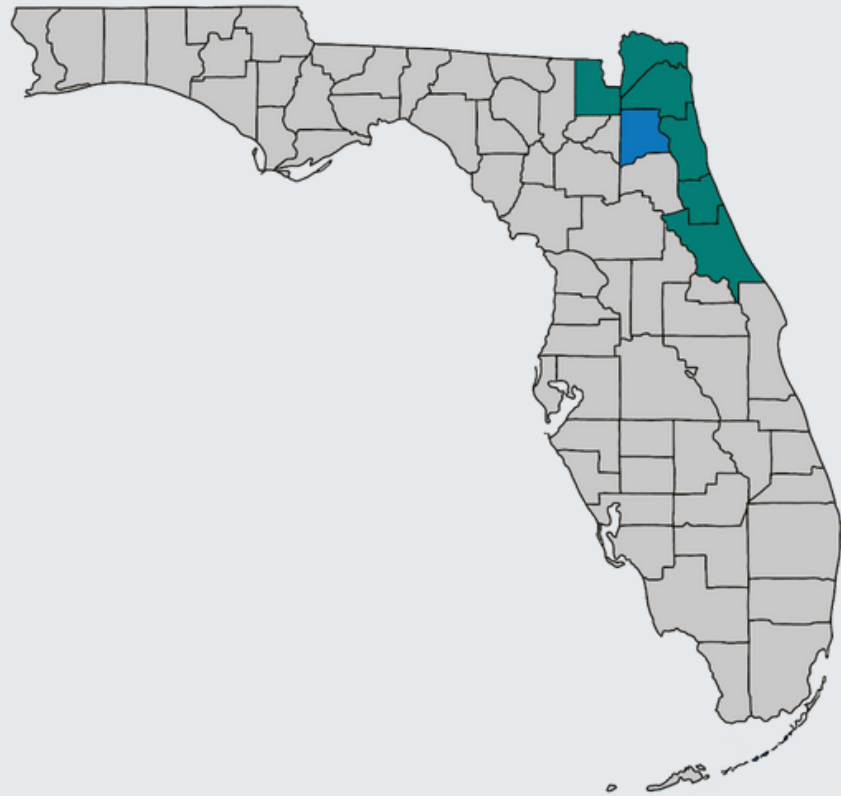
# COUNTY HEALTH RANKINGS, CLAY COUNTY, 2023

Overall Rankings	Health Outcomes: 21st out of 67 counties			
	Health Factors: 12th out of 67 counties			
Breakdown of Health Factors Rankings	HEALTH BEHAVIORS	CLINICAL CARE	SOCIO-ECONOMIC	PHYSICAL ENVIRONMENT
	Tobacco Diet and Exercise Alcohol Use High-Risk Sex	Access to Care Quality of Care	Education Employment Income Family/Social Support Community Safety	Air Quality Built Environment Access to Healthy Food Liquor Stores
	Clay Rank: 27th *improved from 2022	Clay Rank: 20th *declined from 2022	Clay Rank: 5th *declined from 2022	Clay Rank: 34th *improved from 2022

# NEIGHBORHOOD & BUILT ENVIRONMENT

## Geography and Governance

Clay County encompasses approximately 604 square miles of Northeast Florida immediately southwest of the metropolitan city of Jacksonville and directly west of historic St. Augustine. The St. Johns River forms the county's entire eastern border. The county contains 46 square miles of water in its many lakes and rivers and many square miles of undeveloped woodlands. Clay County was founded nearly 150 years ago and has evolved into a diverse mixture of both suburban and rural areas. The five-member, elected Board of County Commissioners is the law-making body of the county, operating under the Home Rule charter since 1991. Each elected member represents a specific district within the county for a designated four-year term. Separately elected Constitutional Officers perform specific government functions countywide. These two groups are the elected officials responsible to the voters of Clay County.



Total Households  
**77,434**



Median Gross Rent  
**\$1,253**



Total Affordable Housing Units  
**293**



Total Homeless  
**0**



Percentage of Sidewalks with Barriers  
**29%**



Total Miles of Bike Lanes  
**45**



People Living Within 1/2 Mile of a Healthy Food Source  
**12.6%**



Nearby State Parks  
**2**



People Living Within 1/2 Mile of a Park  
**22.3%**

# ECONOMIC STABILITY

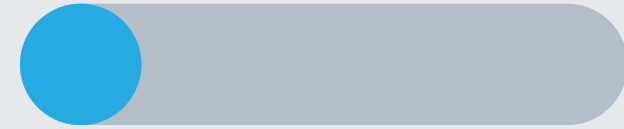
## Clay County



Per Capita Income  
**\$33,670**



Median Household  
Income  
**\$74,059**



Unemployment Rate  
**4.8%**



Population 16+ in Labor Force **62.5%**



Social Security  
Benefit Recipients  
**35,415**



Individuals Below  
Poverty Level  
**20,537**



Children in Foster  
Care  
**315**

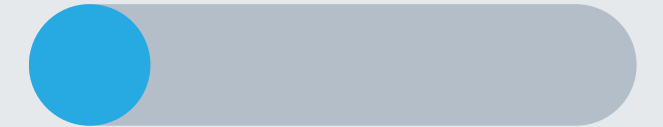
## Florida



Per Capita Income  
**\$35,216**



Median Household  
Income  
**\$61,777**



Unemployment Rate  
**5.3%**



Population 16+ in Labor Force **59.4%**



Social Security  
Benefit Recipients  
**3,829,655**



Individuals Below  
Poverty Level  
**2,744,612**



Children in Foster  
Care  
**25,475**

# EDUCATION ACCESS & QUALITY

## Health Literacy

Health literacy is the degree to which individuals can obtain, process, and understand basic health information. Low health literacy is linked to poor health, higher rates of chronic disease, and higher mortality rates.

## Health Insurance Literacy

Health insurance literacy is the ability to understand, choose, manage, and efficiently utilize health insurance plans. Health insurance literacy is crucial to affordable and effective healthcare decisions and outcomes.

## Digital Literacy

Digital literacy is the ability to use information and communication technologies to find, evaluate, create, and communicate information, requiring both cognitive and technical skills.

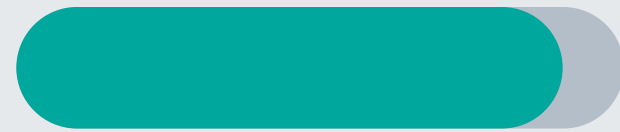
## Clay County



High School Graduate or Higher  
**91.9%**



Bachelor's Degree or Higher  
**26.8%**



High School Graduation Rate  
**89.9%**



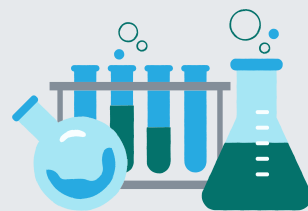
Students Enrolled in Public School  
**39,212**



Elementary Schools  
**27**



Middle Schools  
**6**



High Schools  
**8**

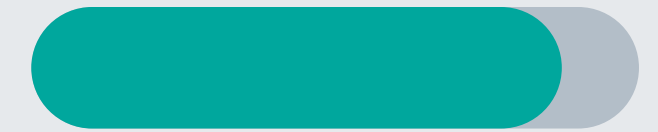
## Florida



High School Graduate or Higher  
**89.0%**



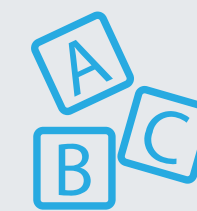
Bachelor's Degree or Higher  
**31.5%**



High School Graduation Rate  
**87.3%**



Students Enrolled in Public School  
**2,870,507**



Elementary Schools  
**1,881**



Middle Schools  
**570**



High Schools  
**641**

# HEALTHCARE ACCESS & QUALITY

## Clay County

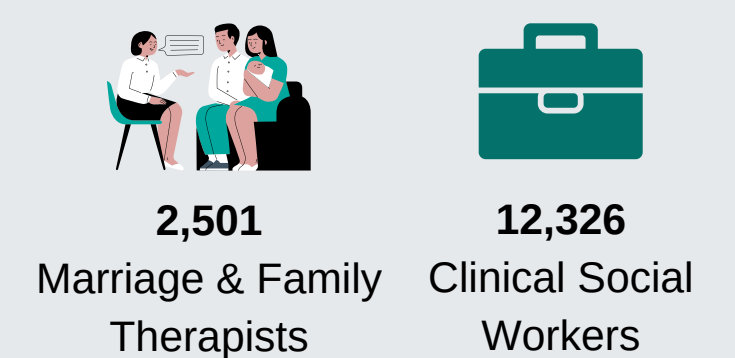
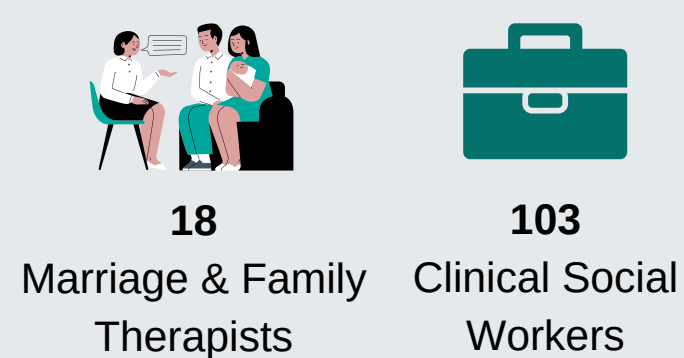
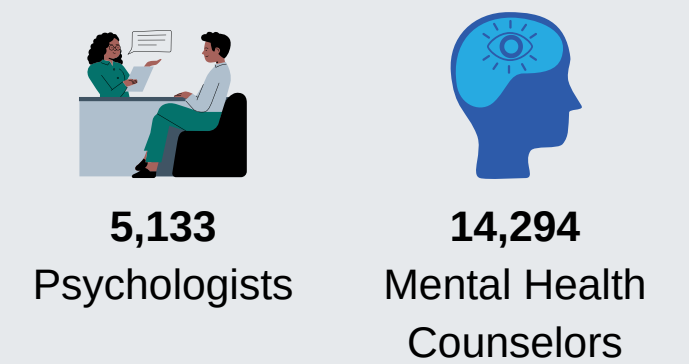
## Florida

### Licensed Providers

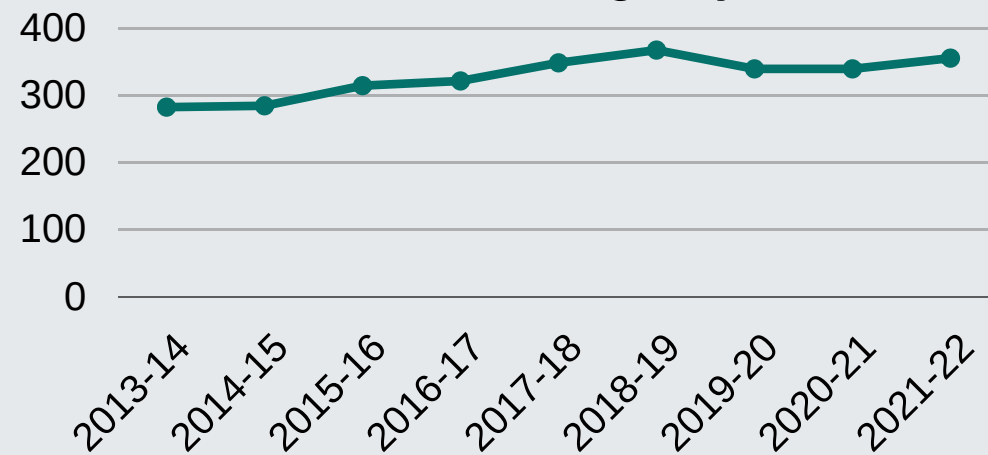
### Licensed Mental Health Professionals

### Licensed Providers

### Licensed Mental Health Professionals

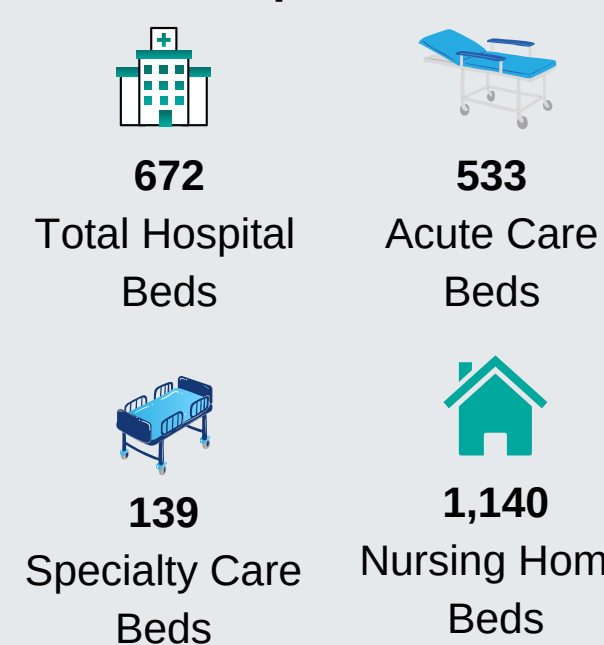


### Number of Practicing Physicians

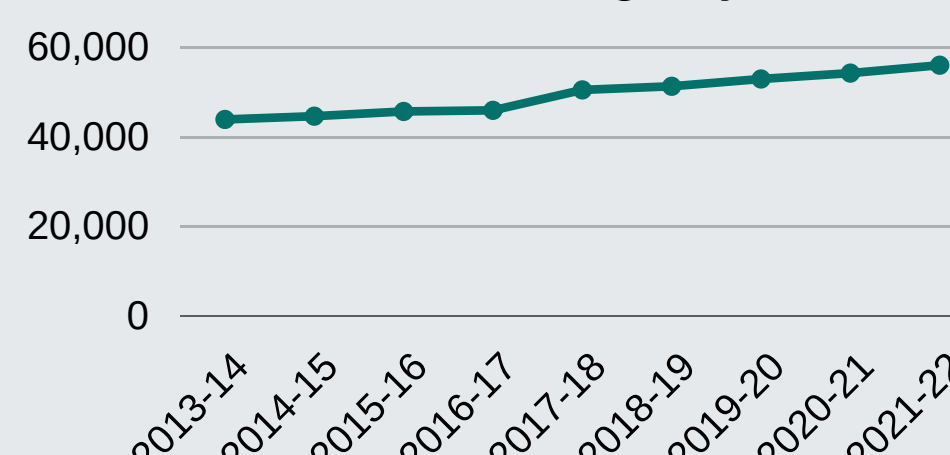


**25.8%** increase in the number of practicing physicians from 2013-14 to 2021-22

### Hospital Beds

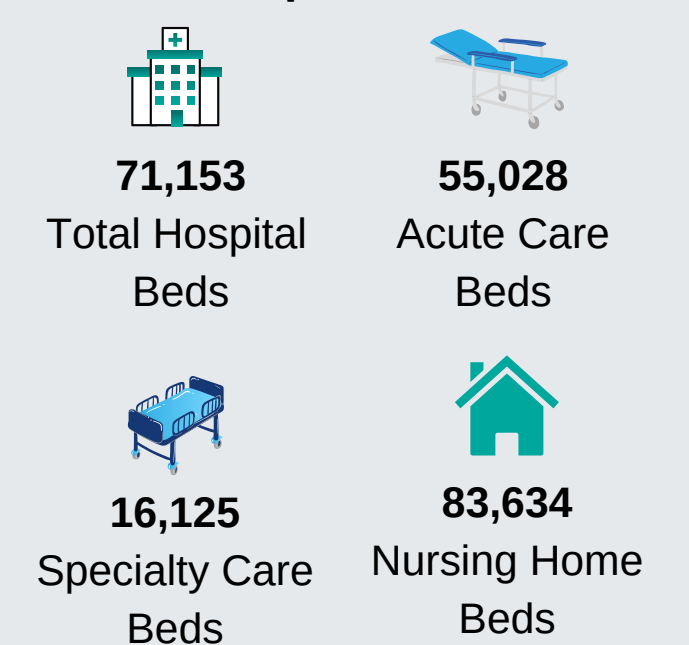


### Number of Practicing Physicians



**24.1%** increase in the number of practicing physicians from 2013-14 to 2021-22

### Hospital Beds



# HEALTHCARE ACCESS & QUALITY

## Health Insurance Coverage

	Clay County		Florida	
	Estimate	Percent	Estimate	Percent
<b>Total Population</b>	213,172	-	21,027,201	-
<b>With health insurance coverage</b>	193,631	90.8%	18,369,975	87.4%
<b>With private health insurance</b>	156,684	73.5%	13,263,169	63.1%
<b>With public coverage</b>	70,941	33.3%	7,709,520	36.7%
<b>No health insurance coverage</b>	19,541	9.2%	2,657,226	12.6%

## Health Professional Shortage Area (HPSA)



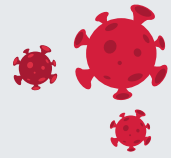
	Designation Status	Designation Type
<b>Primary Health Professional Shortage</b>	Yes	Geographic, Low Income Population

## Medically Underserved Area (MUA)

MUA	Service Area Name	Designation Type
00590	Penney Farms Service Area	Medically Underserved Area

# LEADING CAUSES OF DEATH

## Clay County



### COVID-19

Number of Deaths = 474  
Percent of Deaths = 17.12%



### CANCER

Number of Deaths = 463  
Percent of Deaths = 16.73%



### HEART DISEASE

Number of Deaths = 427  
Percent of Deaths = 15.43%



### UNINTENTIONAL INJURY

Number of Deaths = 183  
Percent of Deaths = 6.61%



### STROKE

Number of Deaths = 130  
Percent of Deaths = 4.70%

## Florida



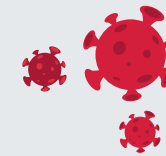
### HEART DISEASE

Number of Deaths = 50,027  
Percent of Deaths = 19.15%



### CANCER

Number of Deaths = 46,889  
Percent of Deaths = 17.95%



### COVID-19

Number of Deaths = 34,490  
Percent of Deaths = 13.20%



### UNINTENTIONAL INJURY

Number of Deaths = 17,654  
Percent of Deaths = 6.76%



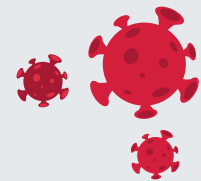
### STROKE

Number of Deaths = 15,567  
Percent of Deaths = 5.96%

# INFECTIOUS DISEASES

**COVID-19** is the disease caused by SARS-CoV-2, the coronavirus that emerged in December 2019. It was declared a pandemic on March 11, 2020 and cases continue to occur. The coronavirus can be spread from person to person and the best way to protect yourself is to get vaccinated and boosted when you are eligible, follow testing guidelines, wear a mask, wash your hands and practice physical distancing.

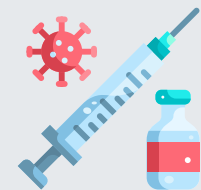
## Clay County



Total Cases

Mar 2020 - Jul 2023

**68,092**

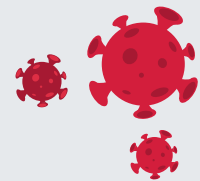


Total Vaccinated

Mar 2020 - Jul 2023

**127,911**

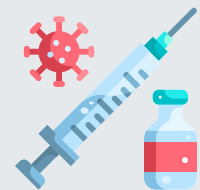
## Florida



Total Cases

Mar 2020 - Jul 2023

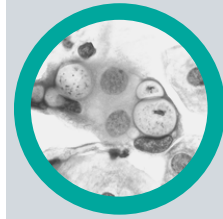
**7,646,882**



Total Vaccinated

Mar 2020 - Jul 2023

**16,259,122**



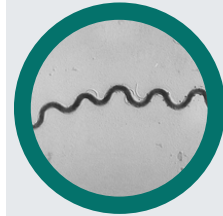
**Chlamydia** is a common sexually transmitted infection (STI) caused by bacteria. Chlamydia affects mostly young women, but it can occur in both men and women and in all age groups.

## Clay County

814 Cases

## Florida

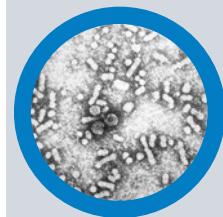
104,570 Cases



**Infectious Syphilis** is a bacterial infection usually spread by sexual contact. The disease starts as a painless sore — typically on the genitals, rectum or mouth. Syphilis spreads from person to person via skin or mucous membrane contact with these sores.

19 Cases

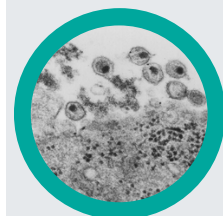
4,498 Cases



**Hepatitis B (chronic)** is a serious liver infection caused by the hepatitis B virus (HBV). For some people, hepatitis B infection becomes chronic, meaning it lasts more than six months. Having chronic hepatitis B increases your risk of developing liver failure, liver cancer or cirrhosis — a condition that permanently scars of the liver.

22 Cases

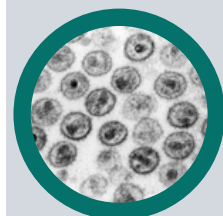
4,412 Cases



**HIV** is a sexually transmitted infection (STI). It can also be spread by contact with infected blood and from illicit injection drug use or sharing needles. It can also be spread from mother to child during pregnancy, childbirth or breastfeeding.

14 Cases

4,708 Cases



**Acquired Immunodeficiency Syndrome (AIDS)** is a chronic, potentially life-threatening condition caused by the human immunodeficiency virus (HIV). By damaging your immune system, HIV interferes with your body's ability to fight infection and disease.

6 Cases

1,860 Cases

# MATERNAL & CHILD HEALTH

## Clay County



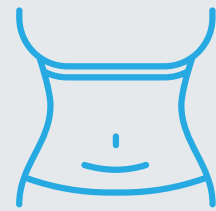
Total Births  
**2,221**



Births to Teen Mothers  
**83**



Births to Mothers 36+  
**280**



C-Section Births  
**717**



Mothers who Initiated  
Breastfeeding  
**1,873**



Births to Mothers who  
Smoked during  
Pregnancy  
**112**

## Florida



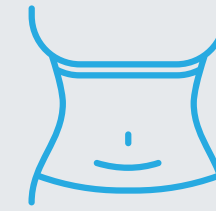
Total Births  
**216,189**



Births to Teen Mothers  
**8,181**



Births to Mothers 36+  
**34,906**



C-Section Births  
**77,274**



Mothers who Initiated  
Breastfeeding  
**183,595**



Births to Mothers who  
Smoked during  
Pregnancy  
**6,235**

	Clay County	Florida
	Estimate	Estimate
Maternal Deaths	1	85
Infant Deaths	12	1,267
White Infant Deaths	9	638
Black Infant Deaths	3	530
Hispanic Infant Deaths	1	329
Non-Hispanic Infant Deaths	11	908
Sudden Unexpected Infant Deaths (SUID)	2	207

# SOCIAL & COMMUNITY CONTEXT

## Clay County



Individuals with Disabilities  
**29,893**



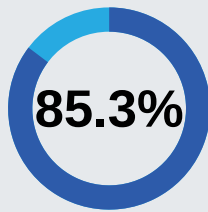
Veterans  
**27,418**



Suicide Deaths  
**45**



Hospitalizations for Self-Harm Injuries  
**111**



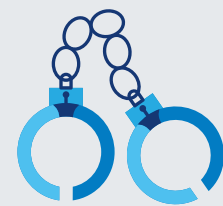
Adults with Good Mental Health



Adults who Engage in Heavy or Binge Drinking  
**18.9%**



Substance Abuse Program Enrollees  
**48 Children**  
**100 Adults**



Total Crime Index  
**3,322**

\*12.8% decrease from 2019 to 2020

Crimes	Count
Murder	6
Rape	99
Robbery	80
Aggravated Assault	383
Burglary	351
Larceny	2,197
Motor Vehicle Theft	206

## Florida



Individuals with Disabilities  
**2,818,838**



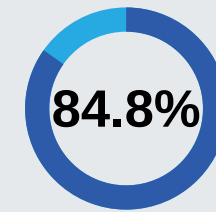
Veterans  
**1,389,309**



Suicide Deaths  
**3,325**



Hospitalizations for Self-Harm Injuries  
**7,637**



Adults with Good Mental Health



Adults who Engage in Heavy or Binge Drinking  
**18.2%**



Substance Abuse Program Enrollees  
**7,458 Children**  
**42,298 Adults**



Total Crime Index  
**466,047**

\*13.9% decrease from 2019 to 2020

Crimes	Count
Murder	1,293
Rape	7,655
Robbery	13,514
Aggravated Assault	60,828
Burglary	52,089
Larceny	292,519
Motor Vehicle Theft	38,150