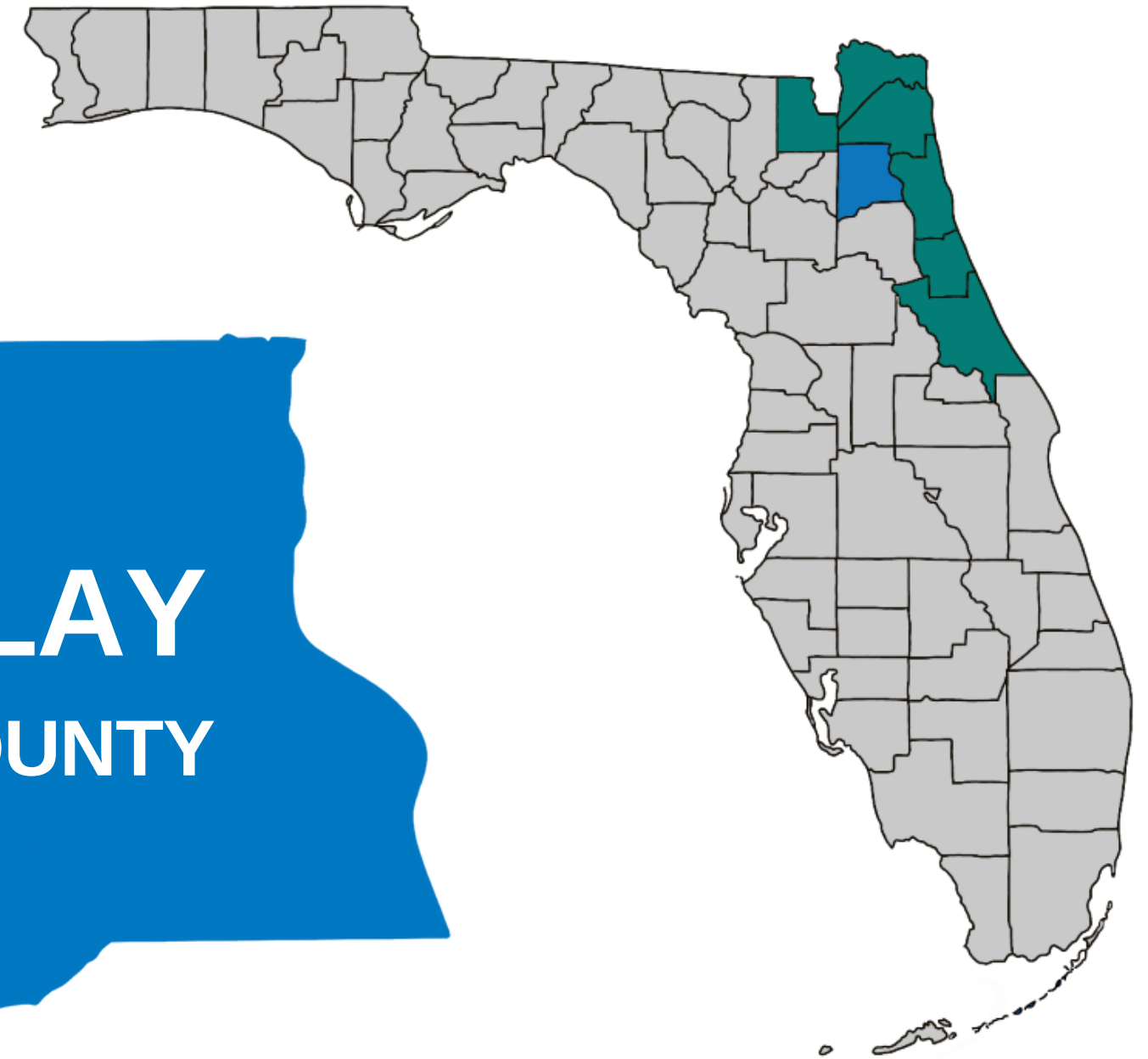


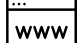



OUR VISION:


Northeast Florida will become the healthiest region in the state through evidence-based assessment, data, and planning.



Health Planning
Council OF NORTHEAST
FLORIDA

 hpcnef.org

 4201 Baymeadows Road, Suite 2
Jacksonville, Florida 32217

 (904) 448-4300

COUNTY DEMOGRAPHICS

Population

Clay County



215,294

1.0% of Florida
Population

Florida



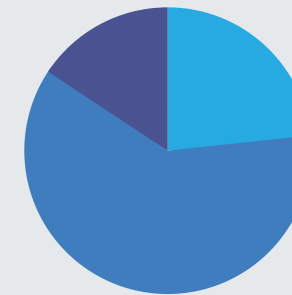
21,216,924

Data Source: U.S. Census Bureau, 2016-2020 American Community Survey 5-Year Estimates, DP05

Age Groups

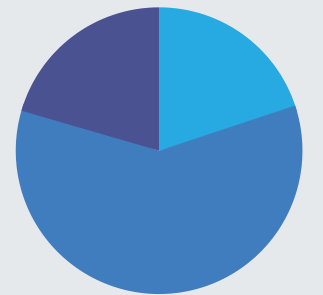
Clay County

	Estimate	Percent
Under 18	50,261	23.3%
18 - 64	131,139	61.0%
65+	33,894	15.7%



Florida

	Estimate	Percent
Under 18	4,214,444	19.9%
18 - 64	12,654,568	59.6%
65+	4,347,912	20.5%



Data Source: U.S. Census Bureau, 2016-2020 American Community Survey 5-Year Estimates, S0101

Gender

Clay County



50.7%

109,230 Females



49.3%

106,064 Males

Florida



51.1%

10,842,330 Females



48.9%

10,374,594 Males

Data Source: U.S. Census Bureau, 2016-2020 American Community Survey 5-Year Estimates, DP05

Race / Ethnicity

Clay County

Florida

	Estimate	Percent	Estimate	Percent
One Race	201,786	93.7%	19,939,907	94.0%
White	166,175	77.2%	15,199,588	71.6%
Black or African American	23,786	11.0%	3,381,061	15.9%
American Indian & Alaskan Native	236	0.1%	55,655	0.3%
Asian	5,934	2.8%	590,668	2.8%
Native Hawaiian & Other Pacific Islander	82	0.0%	13,339	0.1%
Some other race	5,573	2.6%	699,596	3.3%
Two or more races	13,508	6.3%	1,277,017	6.0%
Hispanic or Latino (of any race)	21,945	10.2%	5,468,826	25.8%

Data Source: U.S. Census Bureau, 2016-2020 American Community Survey 5-Year Estimates, DP05

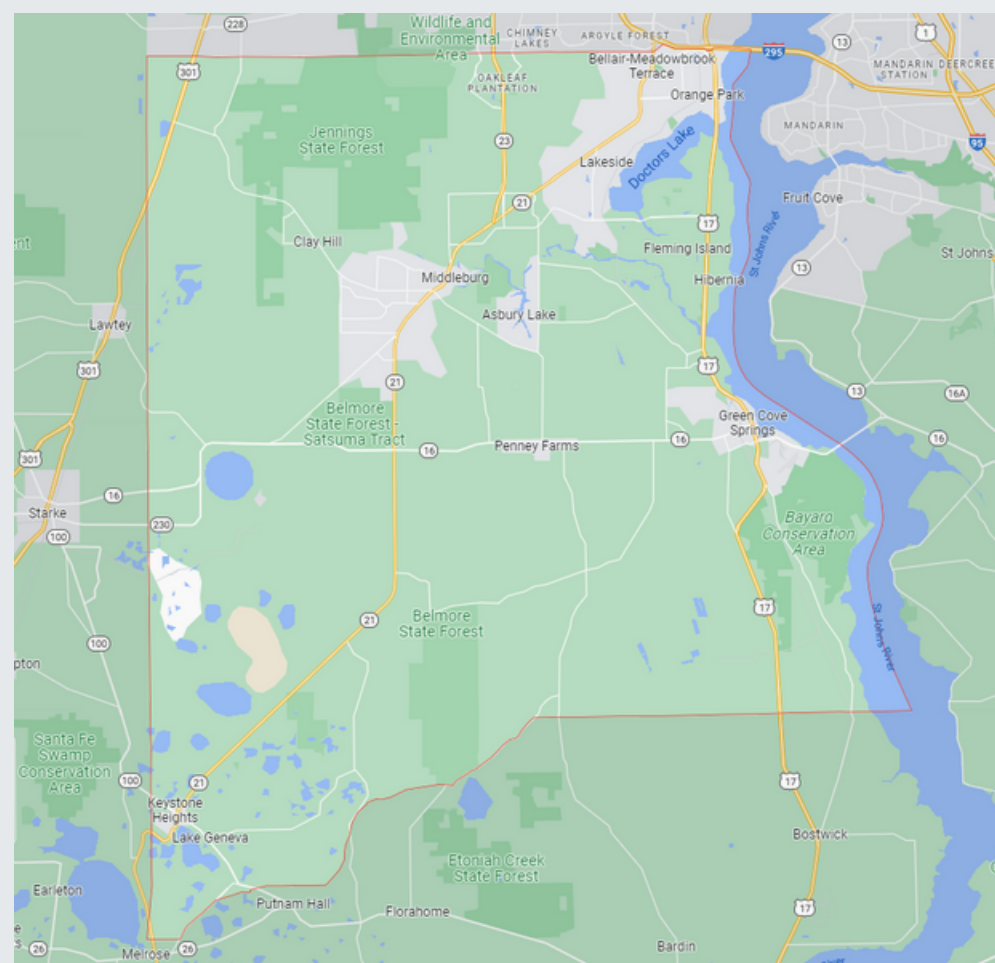
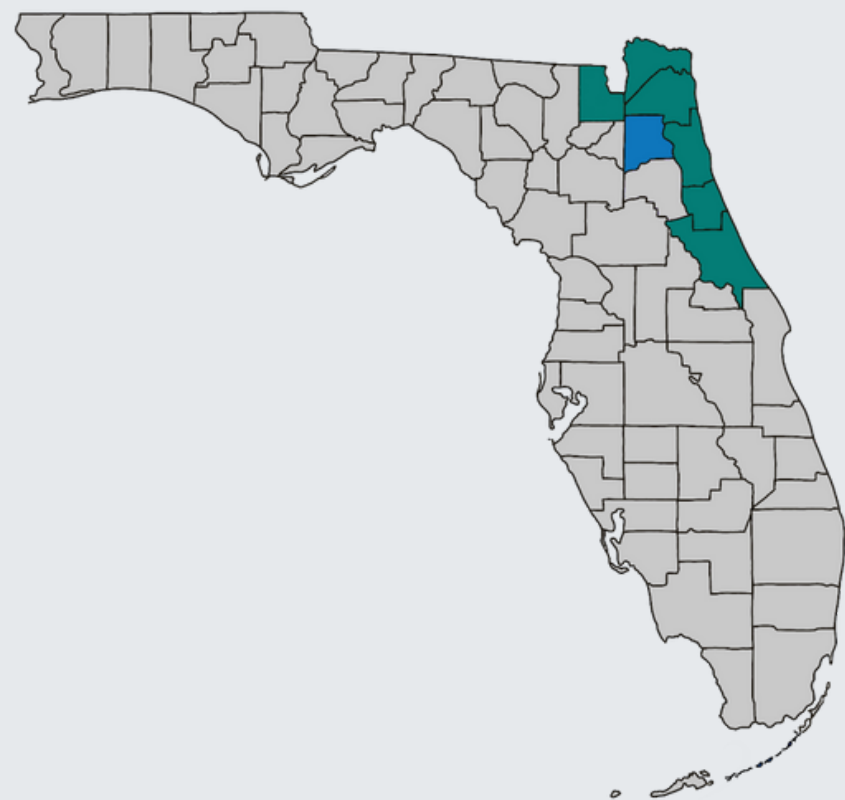
COUNTY HEALTH RANKINGS, CLAY COUNTY, 2022

Overall Rankings	Health Outcomes: 18th out of 67 counties			
	Health Factors: 10th out of 67 counties			
Breakdown of Health Factors Rankings	HEALTH BEHAVIORS	CLINICAL CARE	SOCIO-ECONOMIC	PHYSICAL ENVIRONMENT
	Tobacco Diet and Exercise Alcohol Use High-Risk Sex	Access to Care Quality of Care	Education Employment Income Family/Social Support Community Safety	Air Quality Built Environment Access to Healthy Food Liquor Stores
	Clay Rank: 28th *improved from 2021	Clay Rank: 18th *improved from 2021	Clay Rank: 3rd *improved from 2021	Clay Rank: 43rd *improved from 2021

NEIGHBORHOOD & BUILT ENVIRONMENT

Geography and Governance

Clay County encompasses approximately 604 square miles of Northeast Florida immediately southwest of the metropolitan city of Jacksonville and directly west of historic St. Augustine. The St. Johns River forms the county's entire eastern border. The county contains 46 square miles of water in its many lakes and rivers and many square miles of undeveloped woodlands. Clay County was founded nearly 150 years ago and has evolved into a diverse mixture of both suburban and rural areas. The five-member, elected Board of County Commissioners is the law-making body of the county, operating under the Home Rule charter since 1991. Each elected member represents a specific district within the county for a designated four-year term. Separately elected Constitutional Officers perform specific government functions countywide. These two groups are the elected officials responsible to the voters of Clay County.



Total Households
75,360



Median Gross Rent
\$1,158



Total Affordable Housing Units
203



Total Homeless
57



Percentage of Sidewalks with Barriers
29%



Total Miles of Bike Lanes
45



People Living Within 1/2 Mile of a Healthy Food Source
10.6%



Nearby State Parks
2



People Living Within 1/2 Mile of a Park
20.0%

ECONOMIC STABILITY

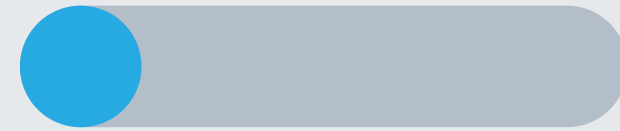
Clay County



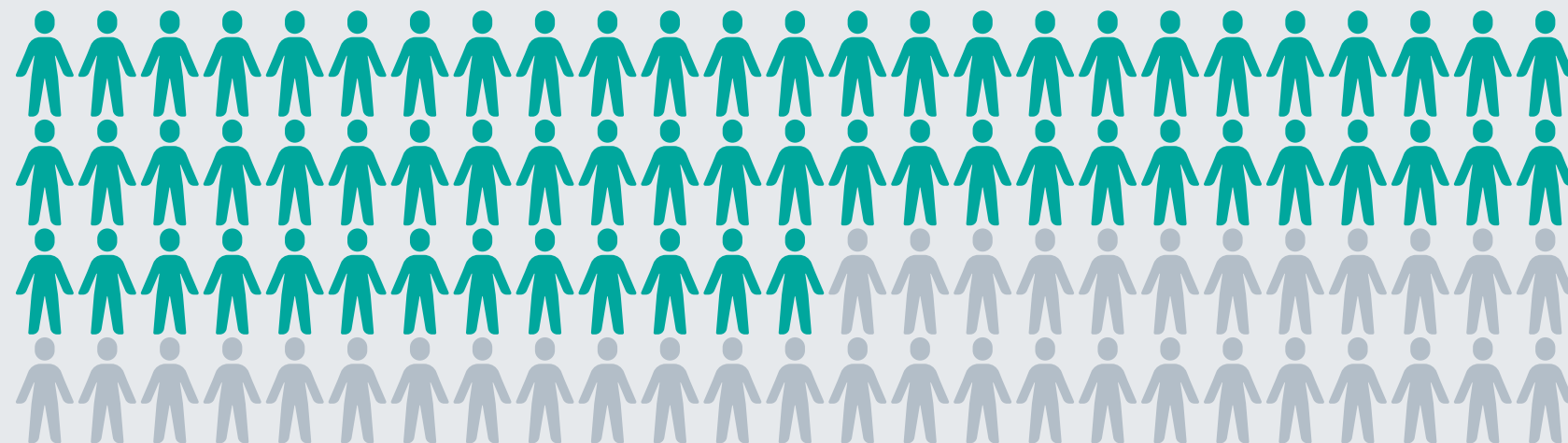
Per Capita Income
\$32,037



Median Household
Income
\$68,657



Unemployment Rate
5.4%



Population 16+ in Labor Force **62.9%**



Social Security
Benefit Recipients
34,155



Individuals Below
Poverty Level
20,255



Children in Foster
Care
293

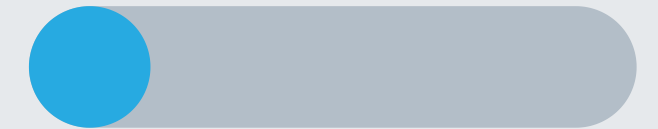
Florida



Per Capita Income
\$32,848



Median Household
Income
\$57,703



Unemployment Rate
5.4%



Population 16+ in Labor Force **58.9%**



Social Security
Benefit Recipients
3,622,600



Individuals Below
Poverty Level
2,772,939



Children in Foster
Care
23,517

EDUCATION ACCESS & QUALITY

Health Literacy

Health literacy is the degree to which individuals can obtain, process, and understand basic health information. Low health literacy is linked to poor health, higher rates of chronic disease, and higher mortality rates.

Health Insurance Literacy

Health insurance literacy is the ability to understand, choose, manage, and efficiently utilize health insurance plans. Health insurance literacy is crucial to affordable and effective healthcare decisions and outcomes.

Digital Literacy

Digital literacy is the ability to use information and communication technologies to find, evaluate, create, and communicate information, requiring both cognitive and technical skills.

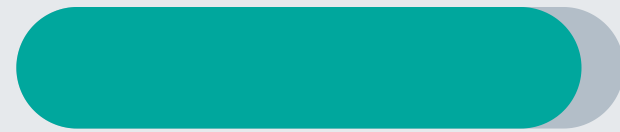
Clay County



High School Graduate
or Higher
92.1%



Bachelor's Degree
or Higher
26.2%



High School Graduation
Rate
92.7%



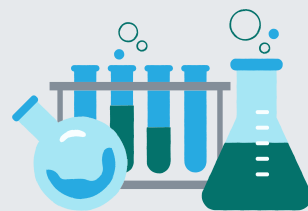
Students Enrolled in
Public School
38,590



Elementary
Schools
27



Middle
Schools
6



High
Schools
8

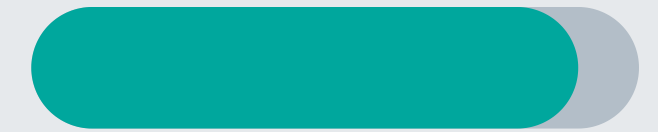
Florida



High School Graduate
or Higher
88.2%



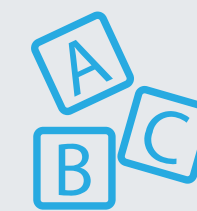
Bachelor's Degree
or Higher
29.9%



High School Graduation
Rate
90.0%



Students Enrolled in
Public School
2,833,179



Elementary
Schools
1,892



Middle
Schools
571



High
Schools
636

HEALTHCARE ACCESS & QUALITY

Clay County

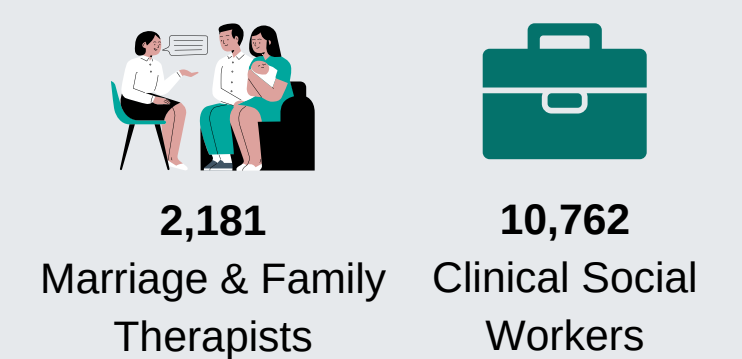
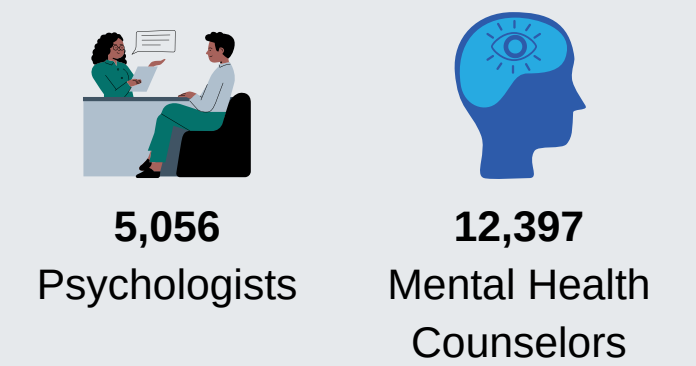
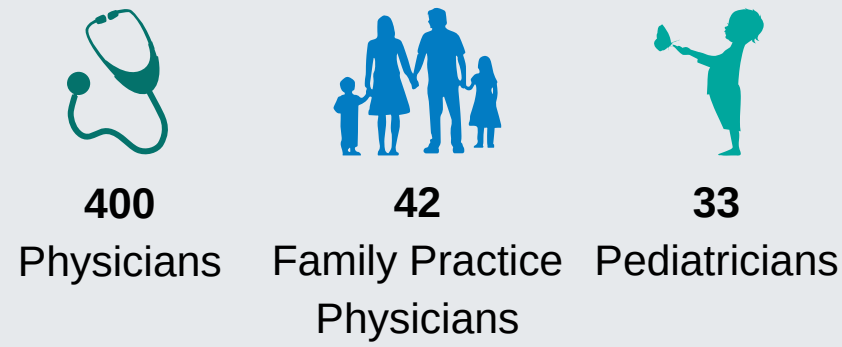
Florida

Licensed Providers

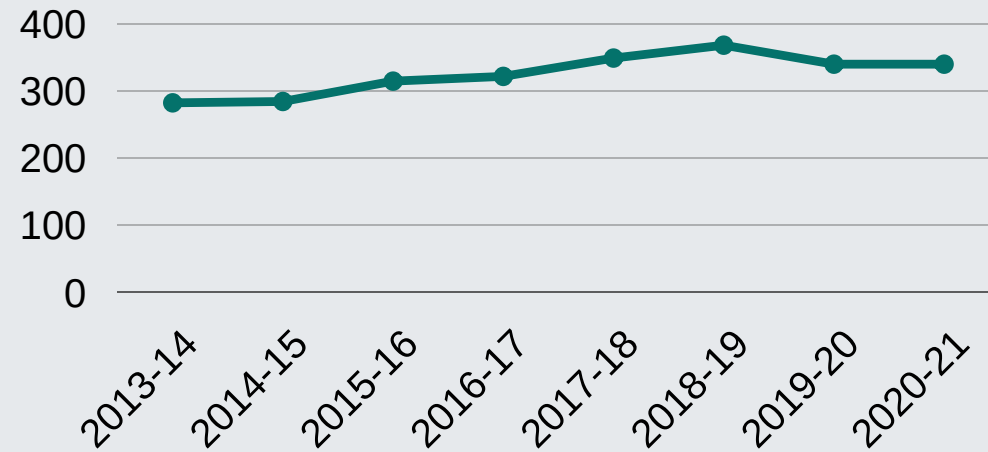
Licensed Mental Health Professionals

Licensed Providers

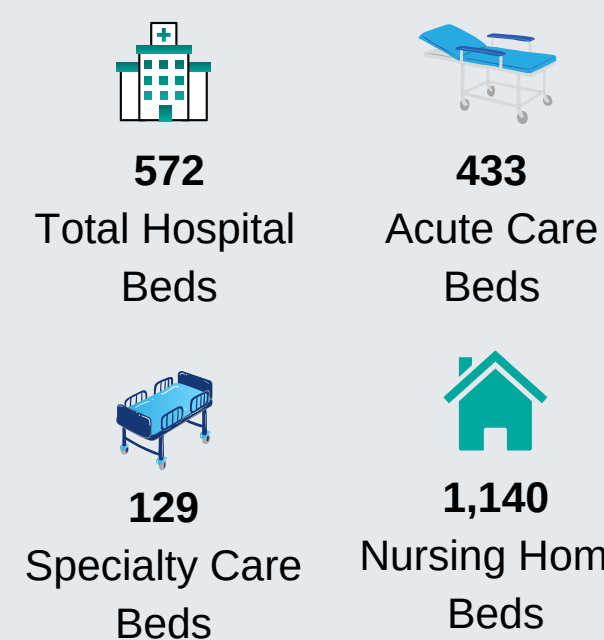
Licensed Mental Health Professionals



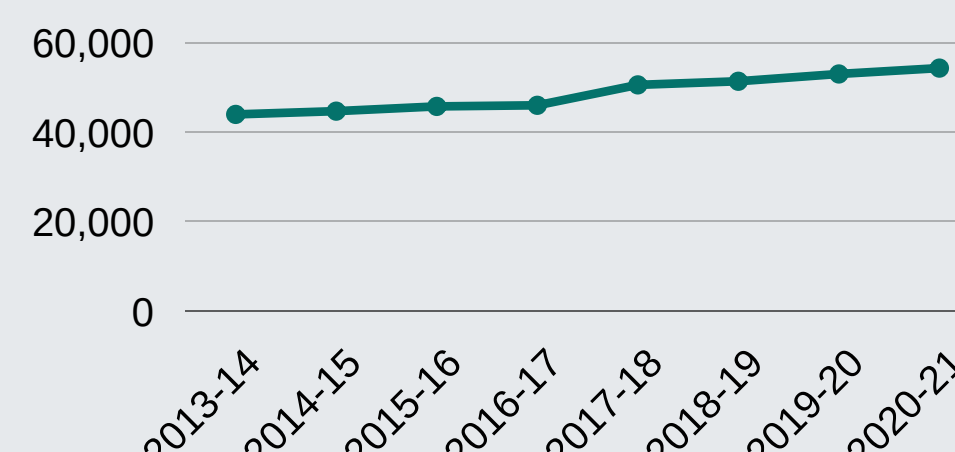
Number of Practicing Physicians



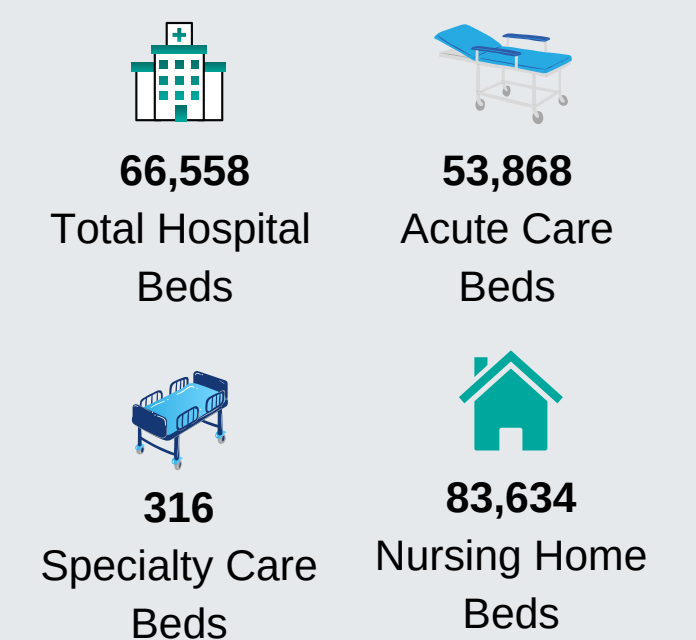
Hospital Beds



Number of Practicing Physicians



Hospital Beds



20.1% increase in the number of practicing physicians from 2013-14 to 2020-21

11.9% increase in the number of practicing physicians from 2013-14 to 2020-21

HEALTHCARE ACCESS & QUALITY

Health Insurance Coverage

	Clay County		Florida	
	Estimate	Percent	Estimate	Percent
Total Population	212,144	-	20,897,188	-
With health insurance coverage	191,697	90.4%	18,250,257	87.3%
With private health insurance	155,699	73.4%	13,150,816	62.9%
With public coverage	69,337	32.7%	7,710,771	36.9%
No health insurance coverage	20,447	9.6%	2,646,931	12.7%

Health Professional Shortage Area (HPSA)



	Designation Status	Designation Type
Primary Health Professional Shortage	Yes	Geographic, Low Income Population

Medically Underserved Area (MUA)

MUA	Service Area Name	Designation Type
00590	Penney Farms Service Area	Medically Underserved Area

LEADING CAUSES OF DEATH

Clay County



CANCER

Number of Deaths = 438
Percent of Deaths = 19.85%



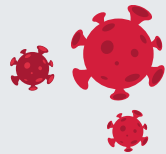
HEART DISEASE

Number of Deaths = 365
Percent of Deaths = 16.55%



UNINTENTIONAL INJURY

Number of Deaths = 156
Percent of Deaths = 7.07%



COVID-19

Number of Deaths = 148
Percent of Deaths = 6.71%



CHRONIC LOWER RESPIRATORY DISEASE

Number of Deaths = 134
Percent of Deaths = 6.07%

Florida



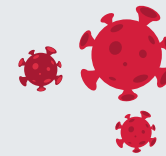
HEART DISEASE

Number of Deaths = 49,208
Percent of Deaths = 20.56%



CANCER

Number of Deaths = 45,723
Percent of Deaths = 19.10%



COVID-19

Number of Deaths = 19,157
Percent of Deaths = 8.00%



UNINTENTIONAL INJURY

Number of Deaths = 15,987
Percent of Deaths = 6.68%



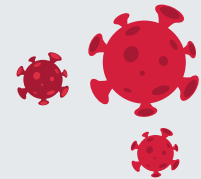
STROKE

Number of Deaths = 15,356
Percent of Deaths = 6.41%

INFECTIOUS DISEASES

COVID-19 is the disease caused by SARS-CoV-2, the coronavirus that emerged in December 2019. It was declared a pandemic on March 11, 2020 and cases continue to occur. The coronavirus can be spread from person to person and the best way to protect yourself is to get vaccinated and boosted when you are eligible, follow testing guidelines, wear a mask, wash your hands and practice physical distancing.

Clay County

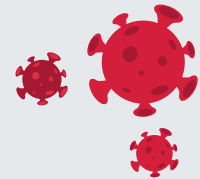


Total Cases

Mar 2020 - Jul 2022

58,887

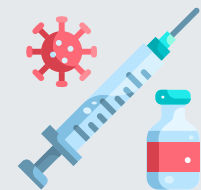
Florida



Total Cases

Mar 2020 - Jul 2022

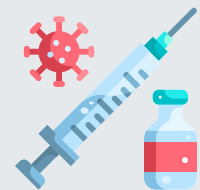
6,640,046



Total Vaccinated

Mar 2020 - Jul 2022

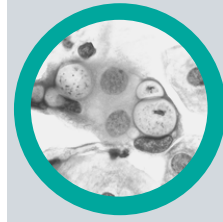
125,451



Total Vaccinated

Mar 2020 - Jul 2022

15,900,810



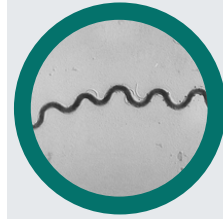
Chlamydia is a common sexually transmitted infection (STI) caused by bacteria. Chlamydia affects mostly young women, but it can occur in both men and women and in all age groups.

Clay County

762 Cases

Florida

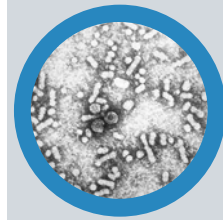
99,229 Cases



Infectious Syphilis is a bacterial infection usually spread by sexual contact. The disease starts as a painless sore — typically on the genitals, rectum or mouth. Syphilis spreads from person to person via skin or mucous membrane contact with these sores.

11 Cases

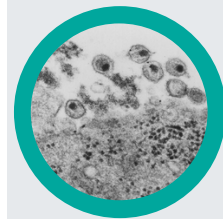
3,499 Cases



Hepatitis B (chronic) is a serious liver infection caused by the hepatitis B virus (HBV). For some people, hepatitis B infection becomes chronic, meaning it lasts more than six months. Having chronic hepatitis B increases your risk of developing liver failure, liver cancer or cirrhosis — a condition that permanently scars of the liver.

33 Cases

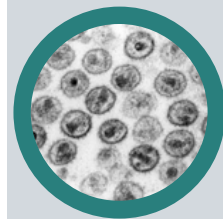
4,061 Cases



HIV is a sexually transmitted infection (STI). It can also be spread by contact with infected blood and from illicit injection drug use or sharing needles. It can also be spread from mother to child during pregnancy, childbirth or breastfeeding.

14 Cases

3,504 Cases



Acquired Immunodeficiency Syndrome (AIDS) is a chronic, potentially life-threatening condition caused by the human immunodeficiency virus (HIV). By damaging your immune system, HIV interferes with your body's ability to fight infection and disease.

6 Cases

1,581 Cases

MATERNAL & CHILD HEALTH

Clay County



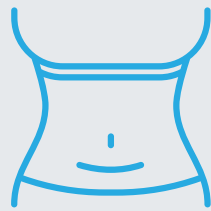
Total Births
2,107



Births to Teen Mothers
77



Births to Mothers 36+
265



C-Section Births
675



Mothers who Initiated
Breastfeeding
1,763



Births to Mothers who
Smoked during
Pregnancy
125

Florida



Total Births
209,645



Births to Teen Mothers
8,918



Births to Mothers 36+
32,761



C-Section Births
75,158



Mothers who Initiated
Breastfeeding
179,098



Births to Mothers who
Smoked during
Pregnancy
7,763

	Clay County	Florida
	Estimate	Estimate
Maternal Deaths	0	28
Infant Deaths	11	1,213
White Infant Deaths	9	627
Black Infant Deaths	2	491
Hispanic Infant Deaths	4	309
Non-Hispanic Infant Deaths	7	870
Sudden Unexpected Infant Deaths (SUID)	1	207

SOCIAL & COMMUNITY CONTEXT

Clay County



Individuals with Disabilities
28,594



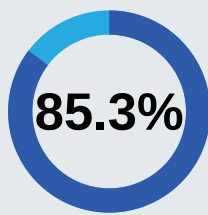
Veterans
28,111



Suicide Deaths
29



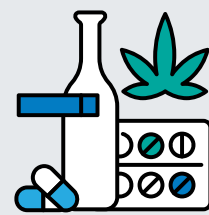
Hospitalizations for Self-Harm Injuries
91



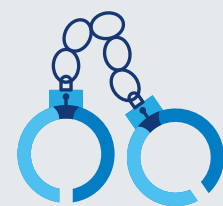
Adults with Good Mental Health



Adults who Engage in Heavy or Binge Drinking
18.9%



Substance Abuse Program Enrollees
48 Children
100 Adults



Total Crime Index
3,322

*12.8% decrease from 2019 to 2020

Crimes	Count
Murder	6
Rape	99
Robbery	80
Aggravated Assault	383
Burglary	351
Larceny	2,197
Motor Vehicle Theft	206

Florida



Individuals with Disabilities
2,840,938



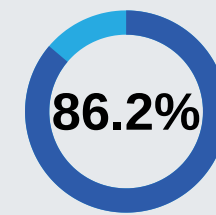
Veterans
1,416,472



Suicide Deaths
3,113



Hospitalizations for Self-Harm Injuries
7,698



Adults with Good Mental Health



Adults who Engage in Heavy or Binge Drinking
18%



Substance Abuse Program Enrollees
7,458 Children
42,298 Adults



Total Crime Index
464,805

*14.1% decrease from 2019 to 2020

Crimes	Count
Murder	1,285
Rape	7,650
Robbery	13,439
Aggravated Assault	60,567
Burglary	51,928
Larceny	291,923
Motor Vehicle Theft	38,013