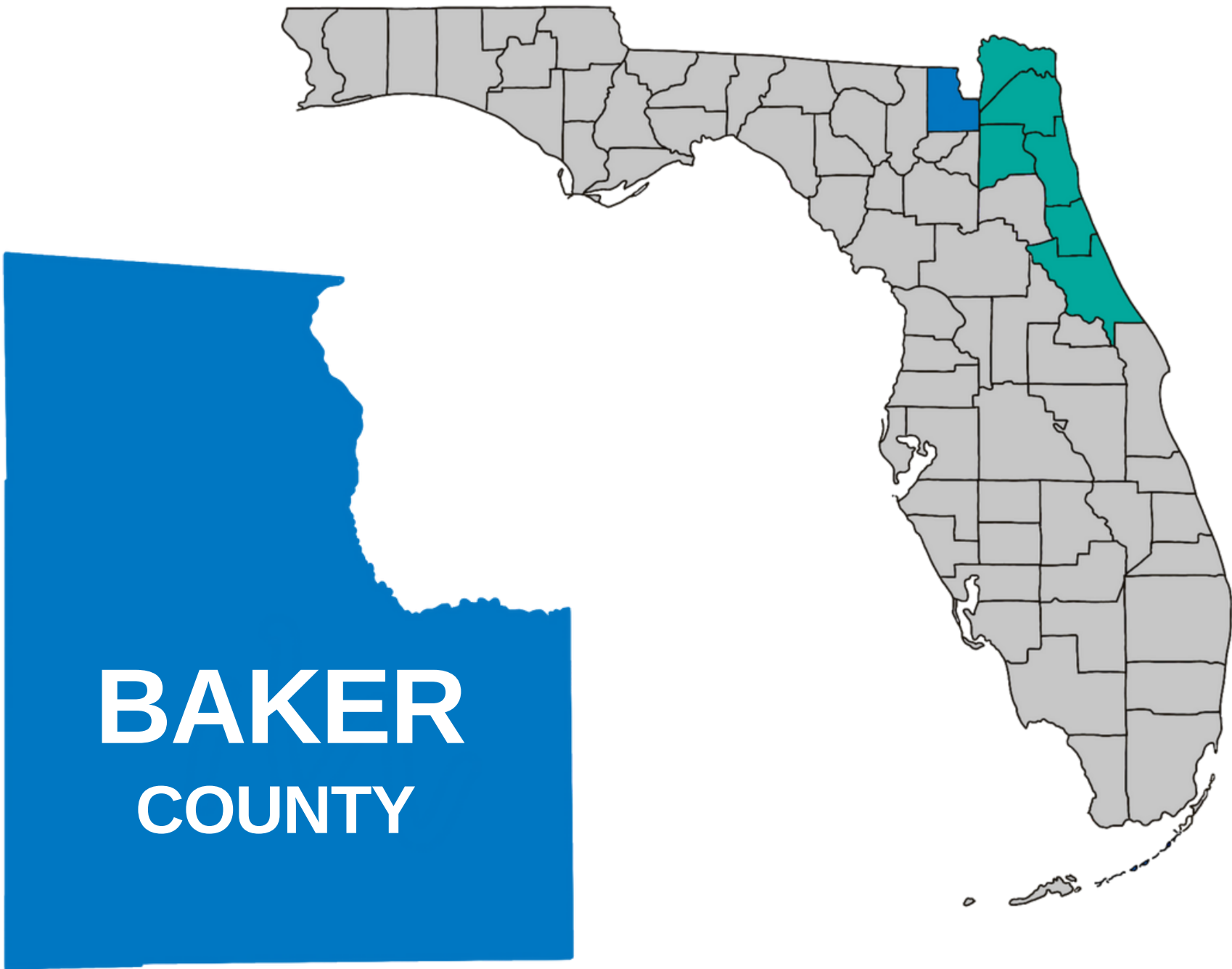




**OUR VISION:**

Northeast Florida will become the healthiest region in the state through evidence-based assessment, data, and planning.



Health Planning  
Council OF NORTHEAST  
FLORIDA



[hpcnef.org](http://hpcnef.org)



4201 Baymeadows Road, Suite 2  
Jacksonville, Florida 32217



(904) 448-4300

# COUNTY DEMOGRAPHICS

## Population

### Baker County



**28,003**

0.1% of Florida  
Population

### Florida



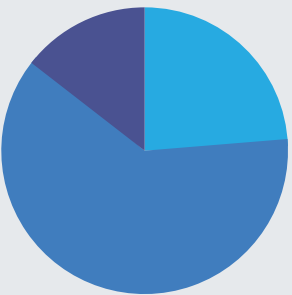
**21,339,762**

*Data Source: U.S. Census Bureau, 2017-2021 American Community Survey 5-Year Estimates, DP05*

## Age Groups

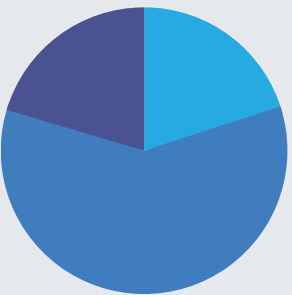
### Baker County

	Estimate	Percent
Under 18	6,650	23.7%
18 - 64	17,295	61.8%
65+	4,058	14.5%



### Florida

	Estimate	Percent
Under 18	4,261,313	20.0%
18 - 64	16,643,484	59.6%
65+	4,346,965	20.4%



*Data Source: U.S. Census Bureau, 2017-2021 American Community Survey 5-Year Estimates, S0101*

## Gender

### Baker County



**46.5%**

13,025 Females



**53.5%**

14,978 Males

### Florida



**50.8%**

10,850,214 Females



**49.2%**

10,489,548 Males

*Data Source: U.S. Census Bureau, 2017-2021 American Community Survey 5-Year Estimates, DP05*

## Race / Ethnicity

	Baker County		Florida	
	Estimate	Percent	Estimate	Percent
One Race	25,982	92.8%	19,338,037	90.6%
White	22,150	79.1%	14,449,017	67.7%
Black or African American	3,527	12.6%	3,358,469	15.7%
American Indian & Alaskan Native	91	0.3%	54,466	0.3%
Asian	92	0.3%	596,862	2.8%
Native Hawaiian & Other Pacific Islander	15	0.1%	13,065	0.1%
Some other race	107	0.4%	866,158	4.1%
Two or more races	2,021	7.2	2,001,725	9.4%
Hispanic or Latino (of any race)	812	2.9%	5,593,090	26.2%

*Data Source: U.S. Census Bureau, 2017-2021 American Community Survey 5-Year Estimates, DP05*



# COUNTY HEALTH RANKINGS, BAKER COUNTY, 2023

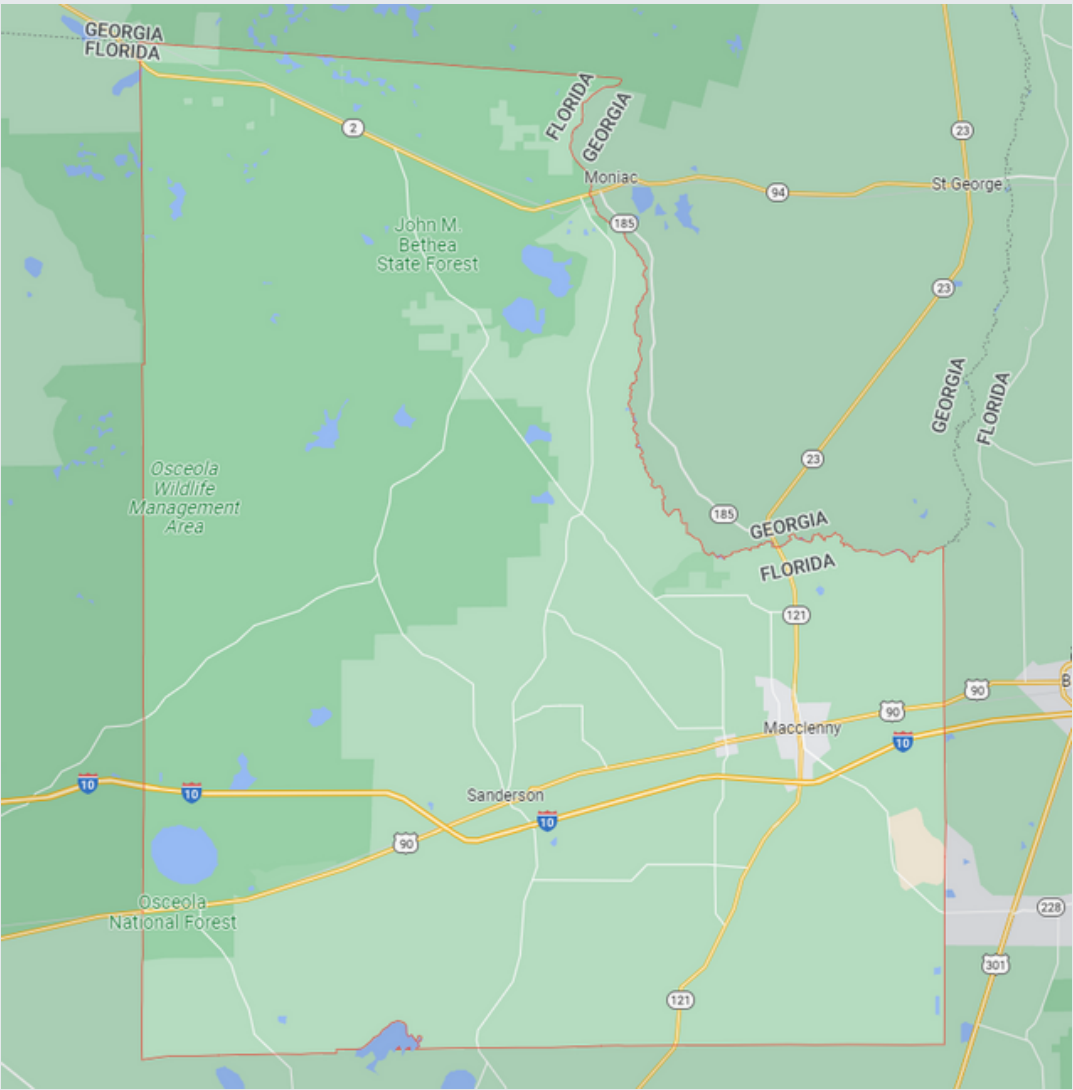
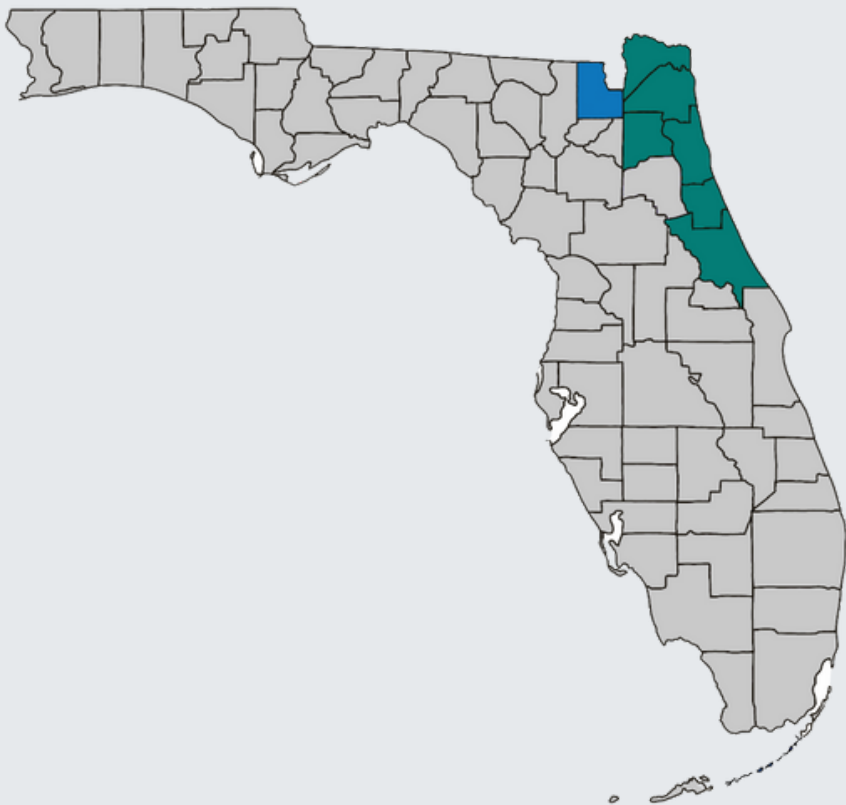
Overall Rankings	Health Outcomes: 45th out of 67 counties			
	Health Factors: 37th out of 67 counties			
Breakdown of Health Factors Rankings	HEALTH BEHAVIORS	CLINICAL CARE	SOCIO-ECONOMIC	PHYSICAL ENVIRONMENT
	Tobacco Diet and Exercise Alcohol Use High-Risk Sex	Access to Care Quality of Care	Education Employment Income Family/Social Support Community Safety	Air Quality Built Environment Access to Healthy Food Liquor Stores
	Baker Rank: 53rd *declined from 2022	Baker Rank: 36th *improved from 2022	Baker Rank: 24th *declined from 2022	Baker Rank: 8th *improved from 2022

*Data Source: Robert Wood Johnson Foundation (2023); retrieved from County Health Rankings and Roadmaps*

# NEIGHBORHOOD & BUILT ENVIRONMENT

## Geography and Governance

Baker County was founded nearly 160 years ago. This county encompasses approximately 585 square miles of Northeast Florida immediately west of the metropolitan city of Jacksonville, 140 miles east of Florida’s capitol Tallahassee, and 45 miles north of the University of Florida in Gainesville. The county contains almost 4 square miles of water in its lakes and rivers and many miles of undeveloped woodlands. The Osceola National Forest covers roughly 220,000 acres of the northern part of Baker County. The five-member elected Board of County Commissioners represents the citizens of Baker County. Each elected member represents a district within the county but is elected countywide.



Total Households  
**8,532**



Median Gross Rent  
**\$873**



Total Affordable  
Housing Units  
**132**



Total Homeless  
**0**



Percentage of  
Sidewalks with Barriers  
**54%**



Total Miles of  
Bike Lanes  
**5**



People Living Within  
1/2 Mile of a Healthy  
Food Source  
**0.6%**



Nearby State  
Parks  
**1**



People Living Within  
1/2 Mile of a Park  
**3.2%**

# ECONOMIC STABILITY

## Baker County



Per Capita Income  
**\$25,689**



Median Household  
Income  
**\$63,860**



Unemployment Rate  
**5.1%**



Population 16+ in Labor Force **54.5%**



Social Security Benefit  
Recipients (Age 65+)  
**3,715**



Individuals Below  
Poverty Level  
**2,895**



Children in Foster  
Care  
**62**

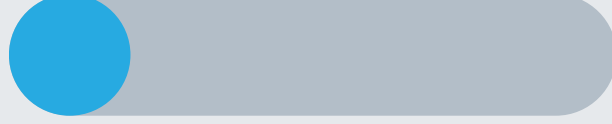
## Florida



Per Capita Income  
**\$35,216**



Median Household  
Income  
**\$61,777**



Unemployment Rate  
**5.3%**



Population 16+ in Labor Force **59.4%**



Social Security Benefit  
Recipients (Age 65+)  
**3,829,655**



Individuals Below  
Poverty Level  
**2,744,612**



Children in Foster  
Care  
**25,475**

# EDUCATION ACCESS & QUALITY

## Health Literacy

Health literacy is the degree to which individuals can obtain, process, and understand basic health information. Low health literacy is linked to poor health, higher rates of chronic disease, and higher mortality rates.

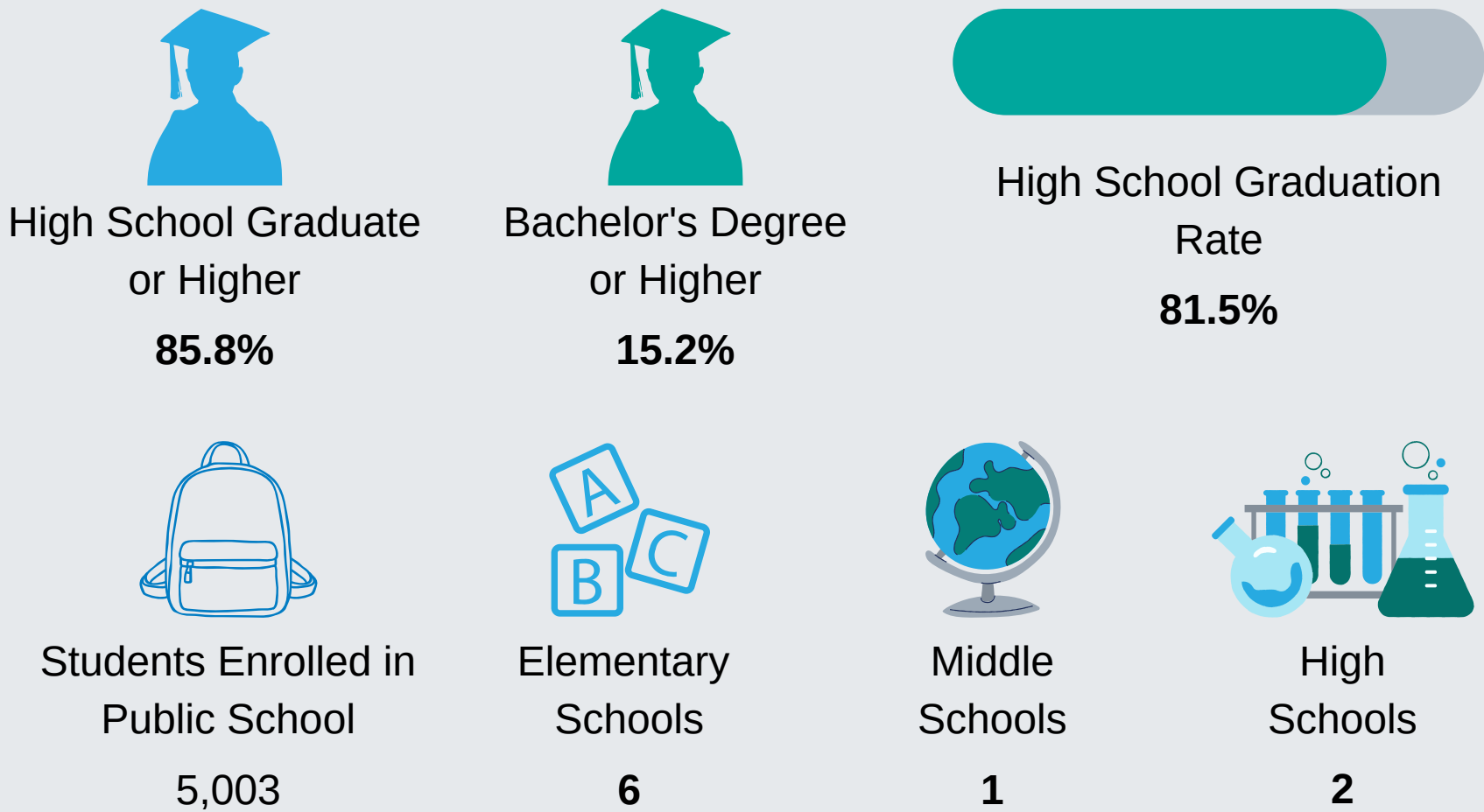
## Health Insurance Literacy

Health insurance literacy is the ability to understand, choose, manage, and efficiently utilize health insurance plans. Health insurance literacy is crucial to affordable and effective healthcare decisions and outcomes.

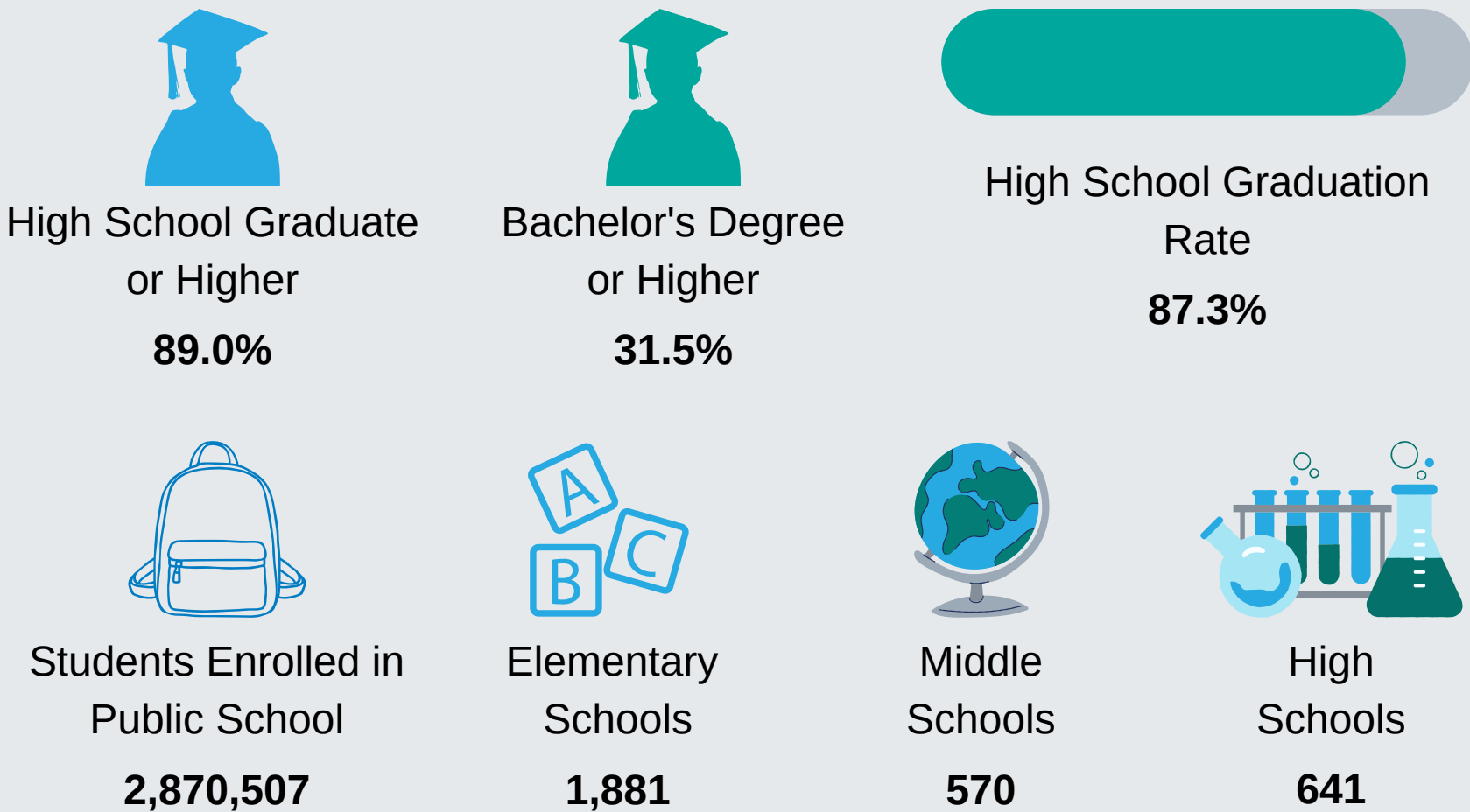
## Digital Literacy

Digital literacy is the ability to use information and communication technologies to find, evaluate, create, and communicate information, requiring both cognitive and technical skills.

## Baker County



## Florida

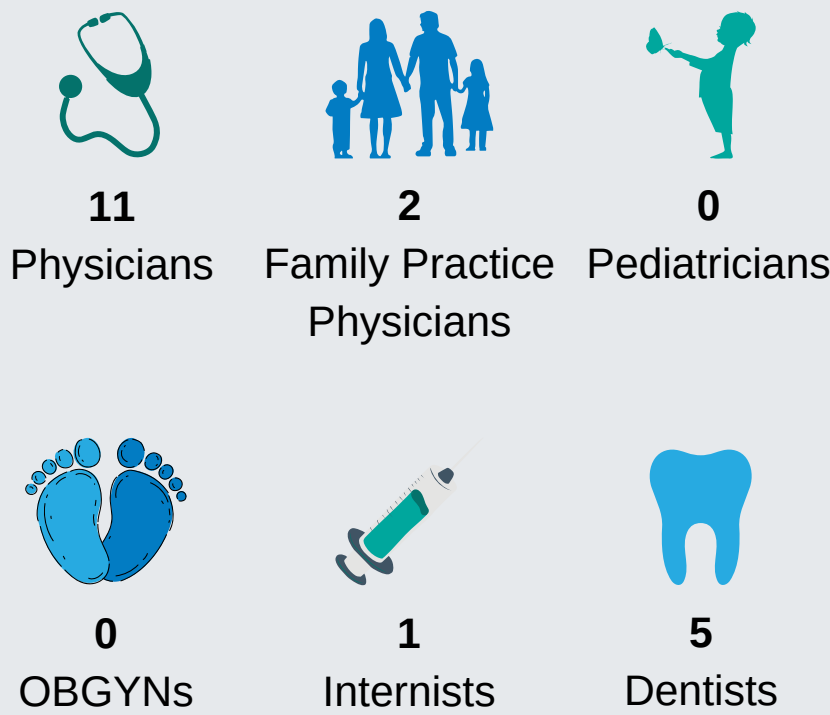


Data Sources: U.S. Census Bureau, 2017-2021 American Community Survey 5-Year Estimates, DP02 ; Florida Health CHARTS, High School Graduation Rate, 2021-22; Florida Department of Education; Baker County School District

# HEALTHCARE ACCESS & QUALITY

## Baker County

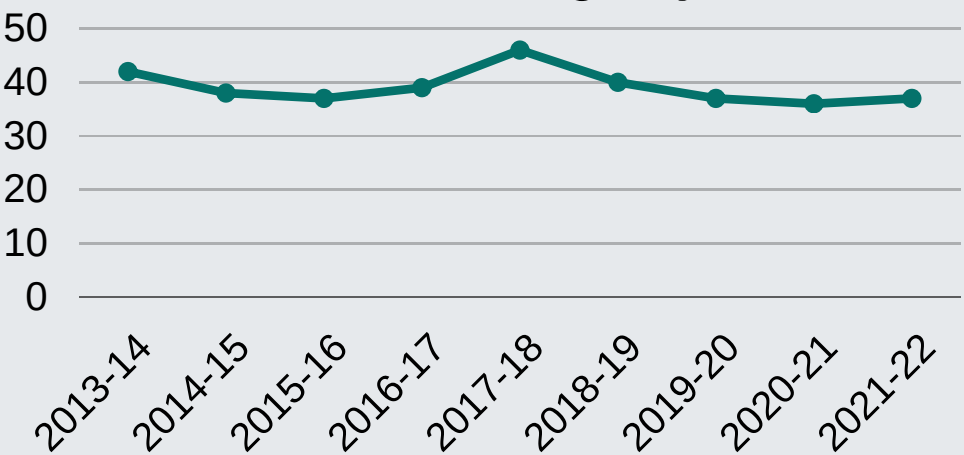
### Licensed Providers



### Licensed Mental Health Professionals

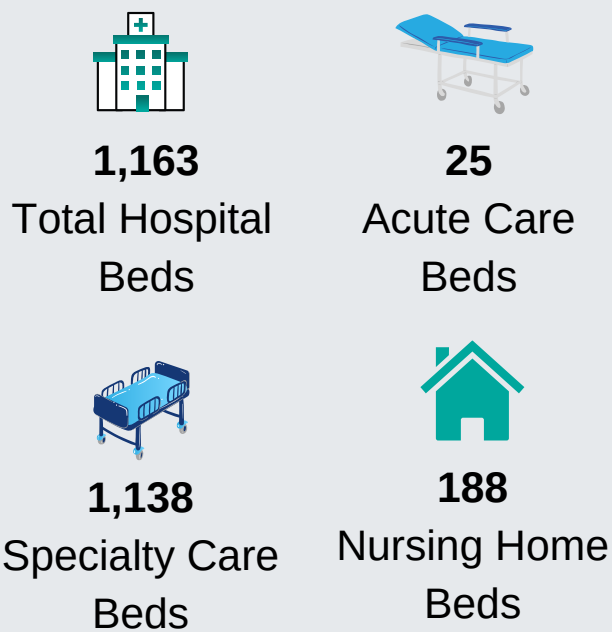


### Number of Practicing Physicians



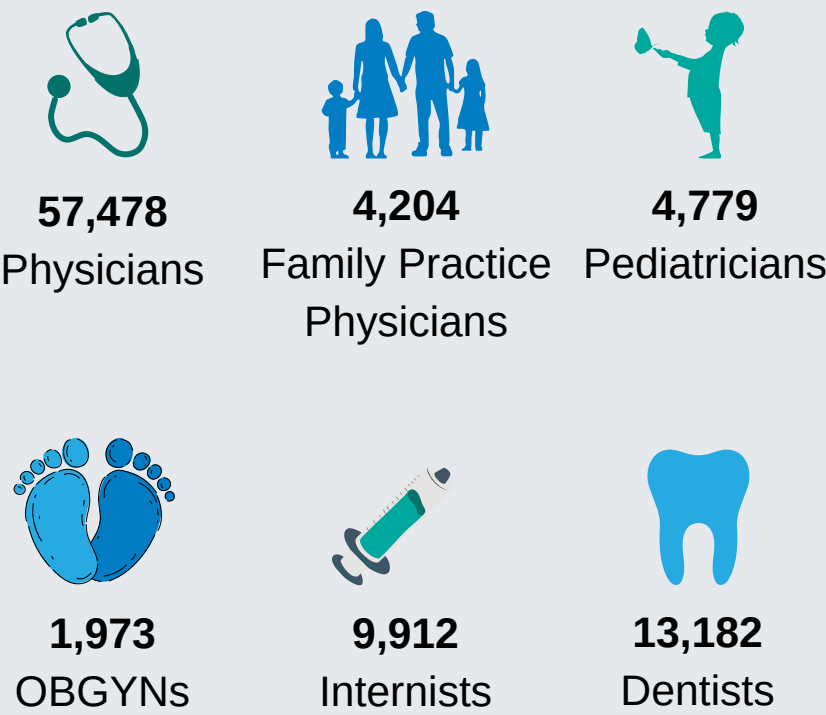
**11.9%** decrease in the number of practicing physicians from 2013-14 to 2021-22

### Hospital Beds

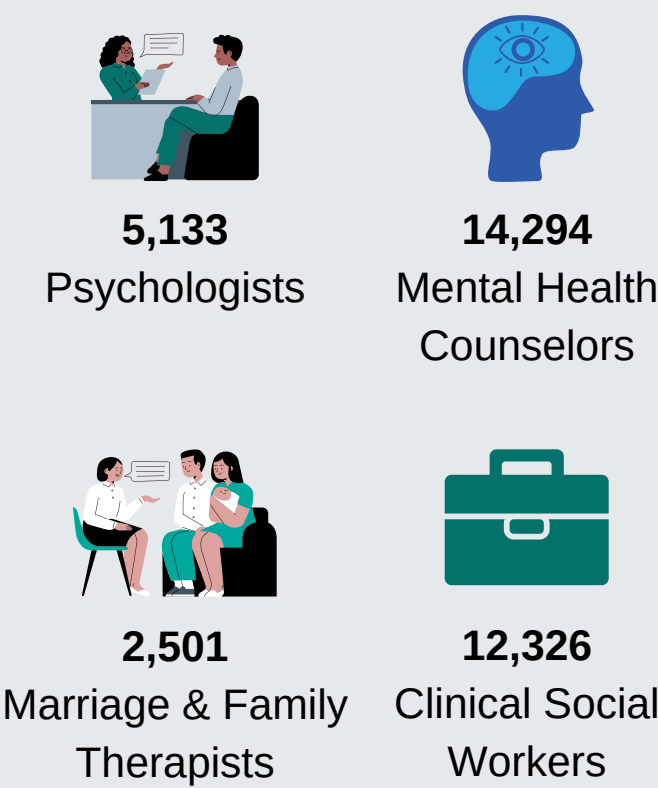


## Florida

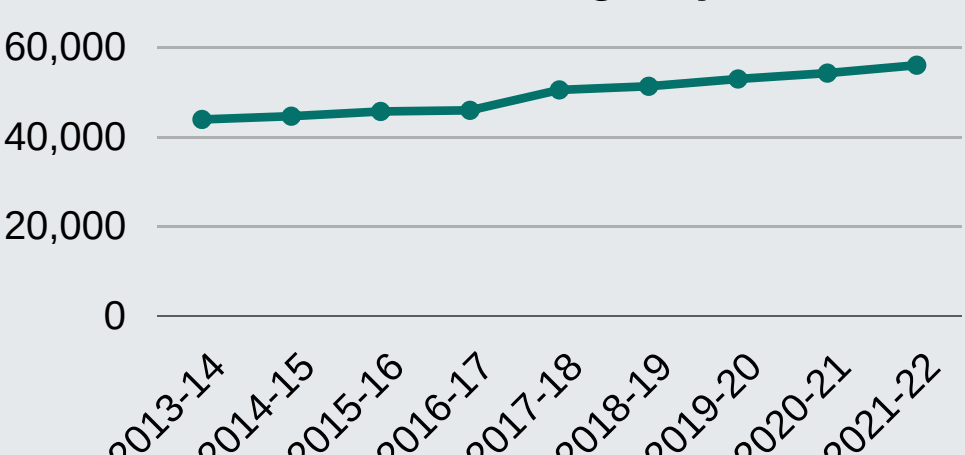
### Licensed Providers



### Licensed Mental Health Professionals

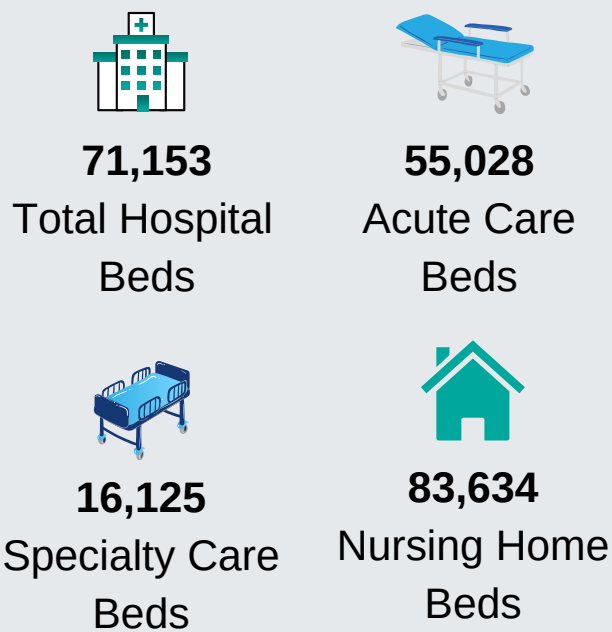


### Number of Practicing Physicians



**24.1%** increase in the number of practicing physicians from 2013-14 to 2021-22

### Hospital Beds








# HEALTHCARE ACCESS & QUALITY

## Health Insurance Coverage

	Baker County		Florida	
	Estimate	Percent	Estimate	Percent
Total Population	24,848	-	21,027,201	-
With health insurance coverage	22,089	88.9%	18,369,975	87.4%
With private health insurance	16,450	66.2%	13,263,169	63.1%
With public coverage	8,639	34.8%	7,709,520	36.7%
No health insurance coverage	2,759	11.1%	2,657,226	12.6%

## Health Professional Shortage Area (HPSA)

	Designation Status	Designation Type
 <div>Primary Health Professional Shortage</div>	Yes	Low Income Population, Correctional Facility, Rural Health Clinic
 <div>Dental Health Professional Shortage</div>	Yes	Low Income Population, Correctional Facility, Rural Health Clinic
 <div>Mental Health Professional Shortage</div>	Yes	Low Income Population, Correctional Facility, Rural Health Clinic

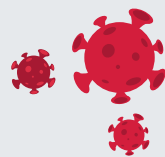
## Medically Underserved Area (MUA)

MUA	Service Area Name	Designation Type
00505	Baker County	Medically Underserved Area



# LEADING CAUSES OF DEATH

## Baker County



### COVID-19

Number of Deaths = 80  
Percent of Deaths = 21.74%



### HEART DISEASE

Number of Deaths = 68  
Percent of Deaths = 18.48%



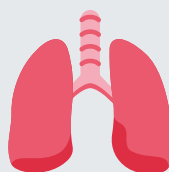
### CANCER

Number of Deaths = 46  
Percent of Deaths = 12.50%



### UNINTENTIONAL INJURY

Number of Deaths = 25  
Percent of Deaths = 6.79%



### CHRONIC LOWER RESPIRATORY DISEASE

Number of Deaths = 24  
Percent of Deaths = 6.52%

## Florida



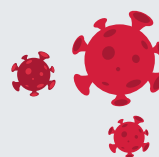
### HEART DISEASE

Number of Deaths = 50,027  
Percent of Deaths = 19.15%



### CANCER

Number of Deaths = 46,889  
Percent of Deaths = 17.95%



### COVID-19

Number of Deaths = 34,490  
Percent of Deaths = 13.20%



### UNINTENTIONAL INJURY

Number of Deaths = 17,654  
Percent of Deaths = 6.76%

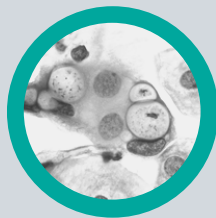
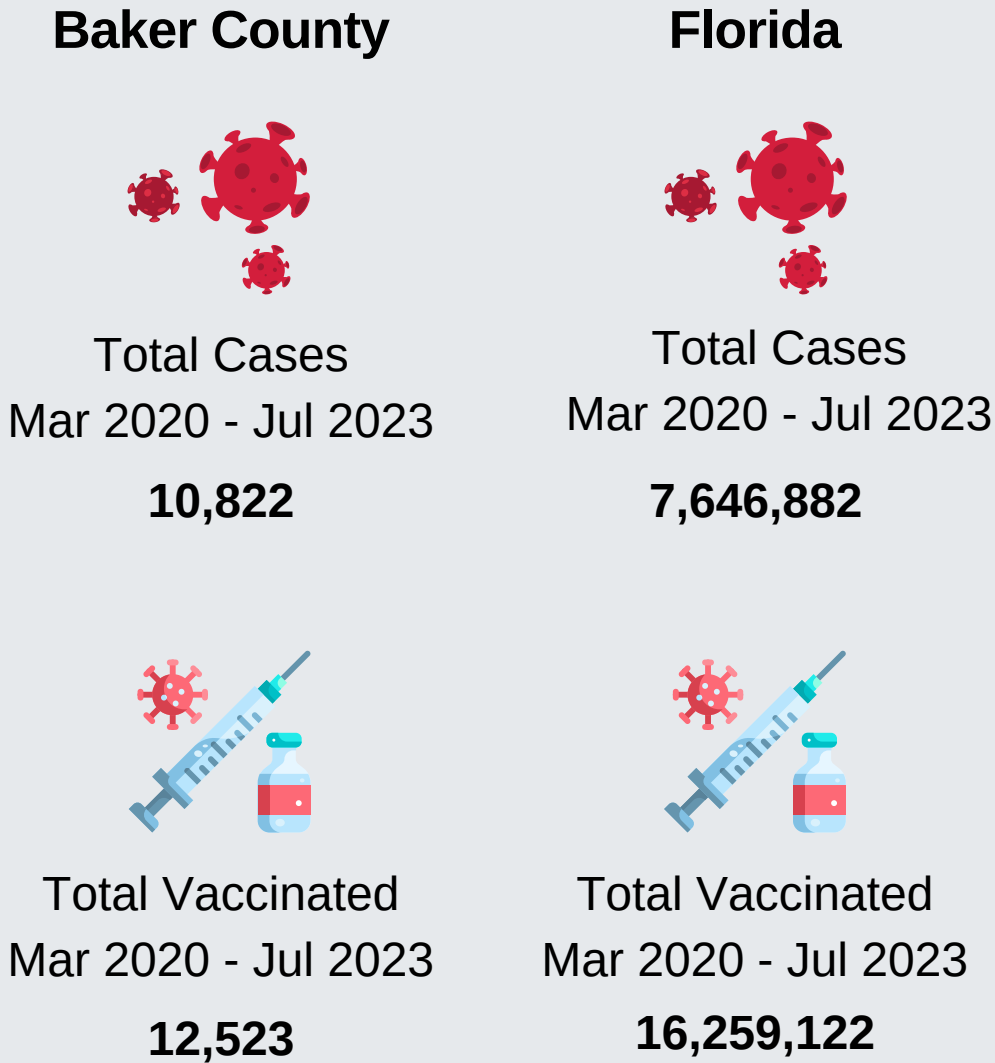


### STROKE

Number of Deaths = 15,567  
Percent of Deaths = 5.96%

# INFECTIOUS DISEASES

**COVID-19** is the disease caused by SARS-CoV-2, the coronavirus that emerged in December 2019. It was declared a pandemic on March 11, 2020 and cases continue to occur. The coronavirus can be spread from person to person and the best way to protect yourself is to get vaccinated and boosted when you are eligible, follow testing guidelines, wear a mask, wash your hands and practice physical distancing.



**Chlamydia** is a common sexually transmitted infection (STI) caused by bacteria. Chlamydia affects mostly young women, but it can occur in both men and women and in all age groups.

## Baker County

120 Cases

## Florida

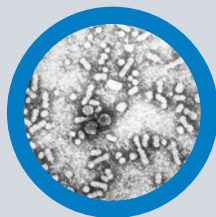
104,570 Cases



**Infectious Syphilis** is a bacterial infection usually spread by sexual contact. The disease starts as a painless sore — typically on the genitals, rectum or mouth. Syphilis spreads from person to person via skin or mucous membrane contact with these sores.

3 Cases

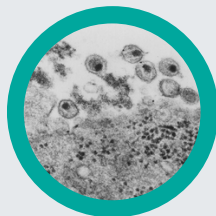
4,498 Cases



**Hepatitis B (chronic)** is a serious liver infection caused by the hepatitis B virus (HBV). For some people, hepatitis B infection becomes chronic, meaning it lasts more than six months. Having chronic hepatitis B increases your risk of developing liver failure, liver cancer or cirrhosis — a condition that permanently scars the liver.

6 Cases

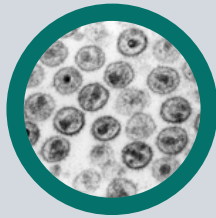
4,412 Cases



**HIV** is a sexually transmitted infection (STI). It can also be spread by contact with infected blood and from illicit injection drug use or sharing needles. It can also be spread from mother to child during pregnancy, childbirth or breastfeeding.

1 Case

4,708 Cases



**Acquired Immunodeficiency Syndrome (AIDS)** is a chronic, potentially life-threatening condition caused by the human immunodeficiency virus (HIV). By damaging your immune system, HIV interferes with your body's ability to fight infection and disease.

1 Case

1,860 Cases

# MATERNAL & CHILD HEALTH

## Baker County



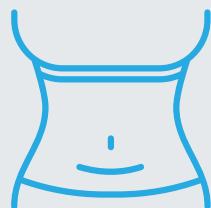
Total Births  
**332**



Births to Teen Mothers  
**29**



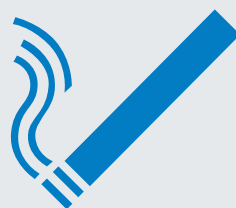
Births to Mothers 36+  
**17**



C-Section Births  
**106**



Mothers who Initiated  
Breastfeeding  
**254**



Births to Mothers who  
Smoked during  
Pregnancy  
**17**

## Florida



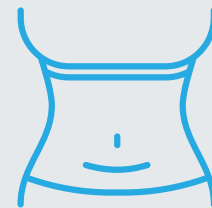
Total Births  
**216,189**



Births to Teen Mothers  
**8,181**



Births to Mothers 36+  
**34,906**



C-Section Births  
**77,274**



Mothers who Initiated  
Breastfeeding  
**183,595**



Births to Mothers who  
Smoked during  
Pregnancy  
**6,235**

	Baker County	Florida
	Estimate	Estimate
Maternal Deaths	0	85
Infant Deaths	0	1,267
White Infant Deaths	0	638
Black Infant Deaths	0	530
Hispanic Infant Deaths	0	329
Non-Hispanic Infant Deaths	0	908
Sudden Unexpected Infant Deaths (SUID)	0	207



# SOCIAL & COMMUNITY CONTEXT

## Baker County



Individuals with  
Disabilities  
**3,827**



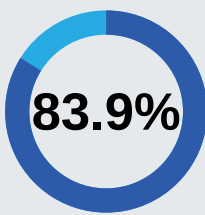
Veterans  
**1,799**



Suicide Deaths  
**3**



Hospitalizations for  
Self-Harm Injuries  
**7**



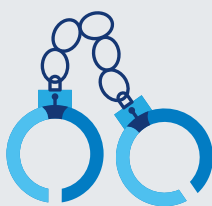
Adults with Good  
Mental Health



Adults who Engage in  
Heavy or Binge Drinking  
**15.2%**



Substance Abuse Program  
Enrollees  
**7 Children**  
**39 Adults**



Total Crime Index  
**406**

\*2.5% increase from  
2019 to 2020

Crimes	Count
Murder	2
Rape	11
Robbery	3
Aggravated Assault	116
Burglary	33
Larceny	212
Motor Vehicle Theft	29

## Florida



Individuals with  
Disabilities  
**2,818,838**



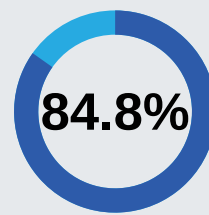
Veterans  
**1,389,309**



Suicide Deaths  
**3,325**



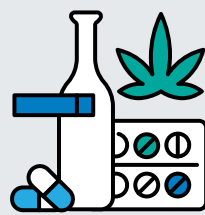
Hospitalizations for  
Self-Harm Injuries  
**7,637**



Adults with Good  
Mental Health



Adults who Engage in  
Heavy or Binge Drinking  
**18.2%**



Substance Abuse Program  
Enrollees  
**7,458 Children**  
**42,298 Adults**



Total Crime Index  
**466,047**

\*13.9% decrease  
from 2019 to 2020

Crimes	Count
Murder	1,293
Rape	7,655
Robbery	13,514
Aggravated Assault	60,828
Burglary	52,089
Larceny	292,519
Motor Vehicle Theft	38,150