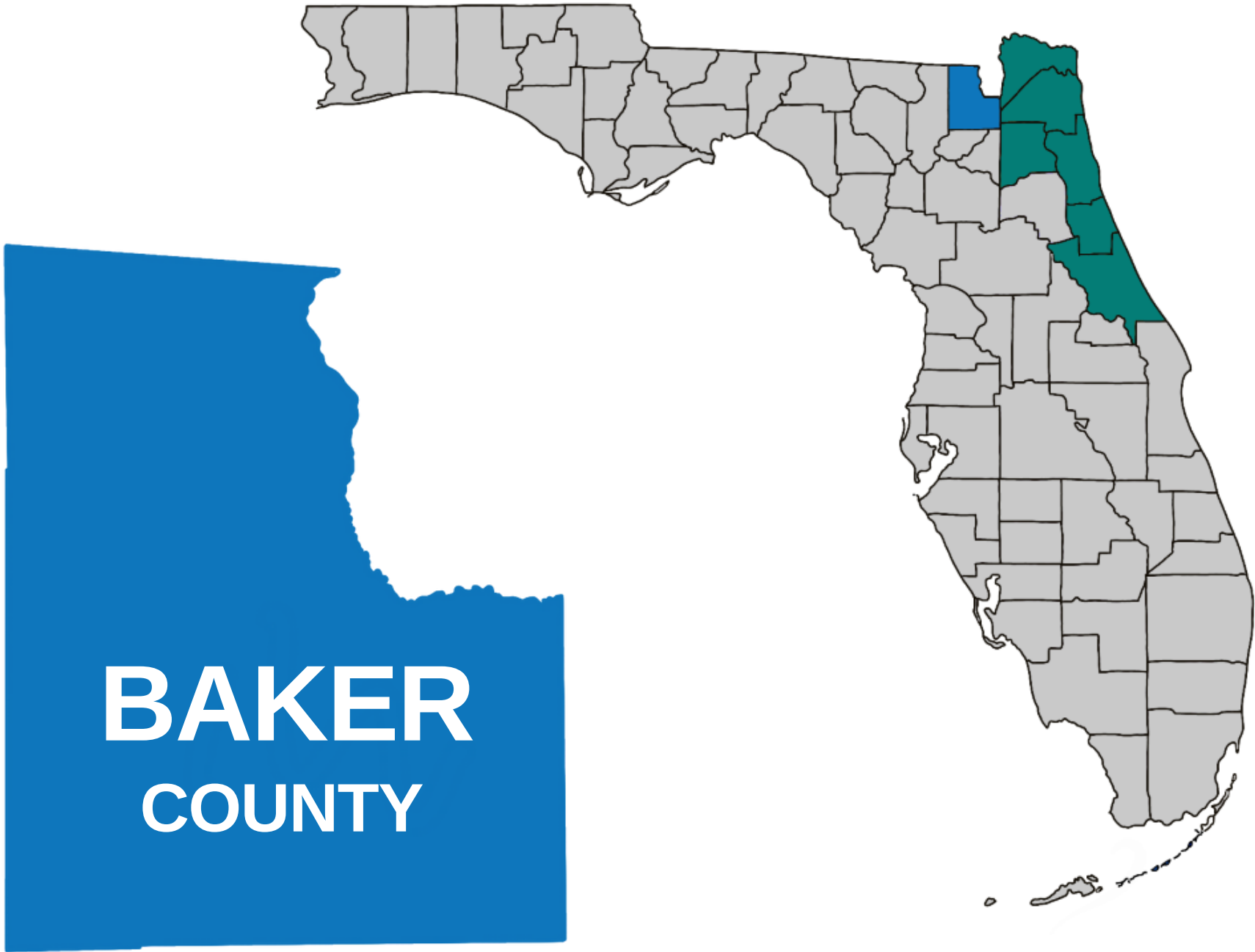




OUR VISION:

Northeast Florida will become the healthiest region in the state through evidence-based assessment, data, and planning.



Health Planning
Council OF NORTHEAST
FLORIDA



hpcnef.org



4201 Baymeadows Road, Suite 2
Jacksonville, Florida 32217



(904) 448-4300

COUNTY DEMOGRAPHICS

Population

Baker County



28,679

0.1% of Florida
Population

Florida



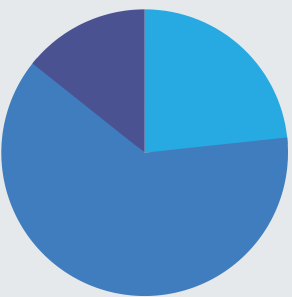
21,216,924

Data Source: U.S. Census Bureau, 2016-2020 American Community Survey 5-Year Estimates, DP05

Age Groups

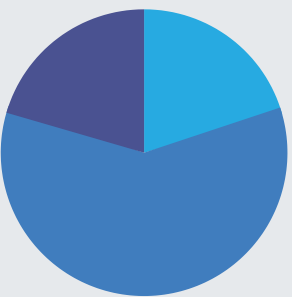
Baker County

	Estimate	Percent
Under 18	6,683	23.3%
18 - 64	17,897	62.4%
65+	4,099	14.3%



Florida

	Estimate	Percent
Under 18	4,214,444	19.9%
18 - 64	12,654,568	59.6%
65+	4,347,912	20.5%



Data Source: U.S. Census Bureau, 2016-2020 American Community Survey 5-Year Estimates, S0101

Gender

Baker County



46.5%

13,346 Females



53.5%

15,333 Males

Florida



51.1%

10,842,330 Females



48.9%

10,374,594 Males

Data Source: U.S. Census Bureau, 2016-2020 American Community Survey 5-Year Estimates, DP05

Race / Ethnicity

Baker County

Florida

	Estimate	Percent	Estimate	Percent
One Race	27,408	95.6%	19,939,907	94.0%
White	22,973	80.1%	15,199,588	71.6%
Black or African American	4,174	14.6%	3,381,061	15.9%
American Indian & Alaskan Native	80	0.3%	55,655	0.3%
Asian	50	0.2%	590,668	2.8%
Native Hawaiian & Other Pacific Islander	10	0.0%	13,339	0.1%
Some other race	121	0.4%	699,596	3.3%
Two or more races	1,271	4.4%	1,277,017	6.0%
Hispanic or Latino (of any race)	771	2.7%	5,468,826	25.8%

Data Source: U.S. Census Bureau, 2016-2020 American Community Survey 5-Year Estimates, DP05

COUNTY HEALTH RANKINGS, BAKER COUNTY, 2022

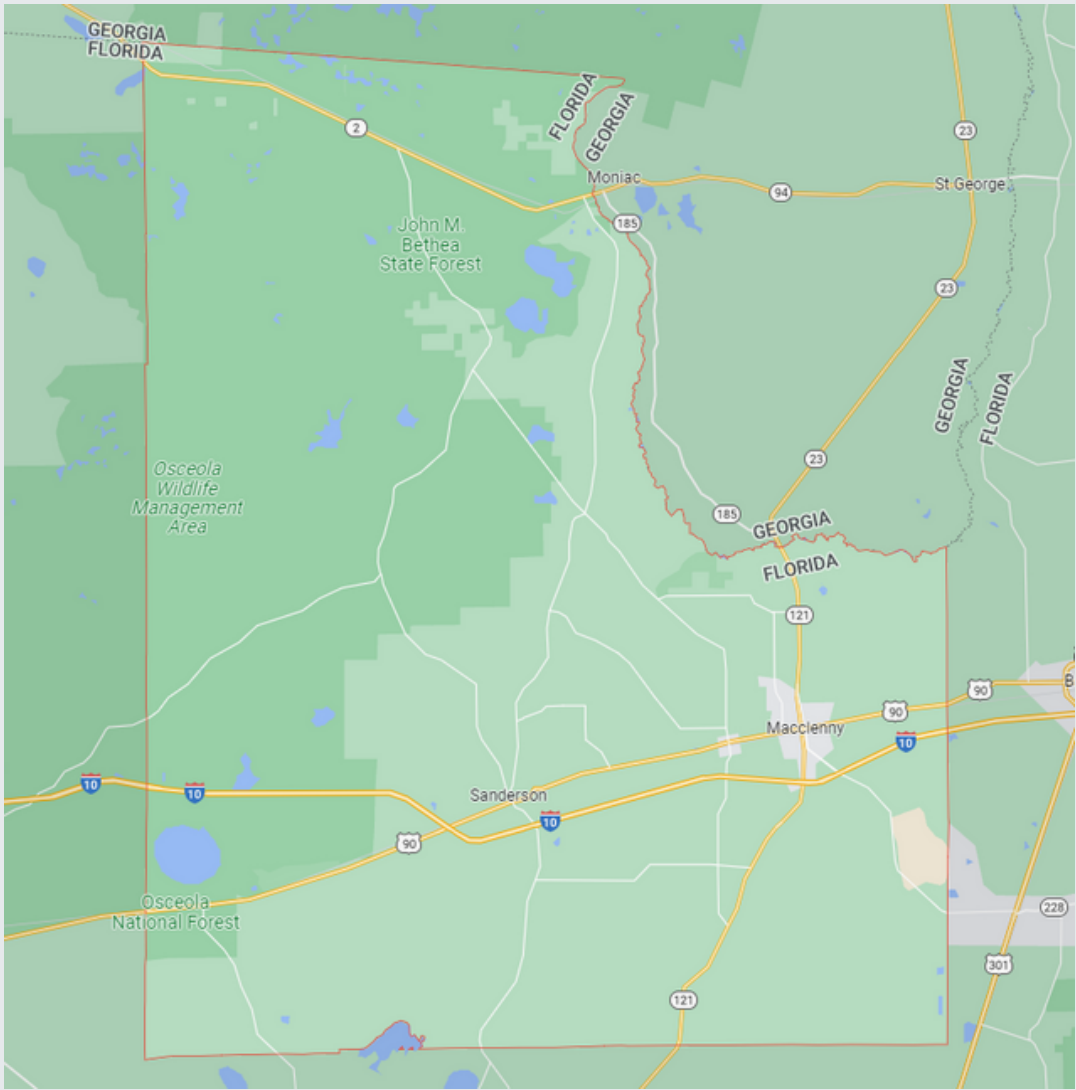
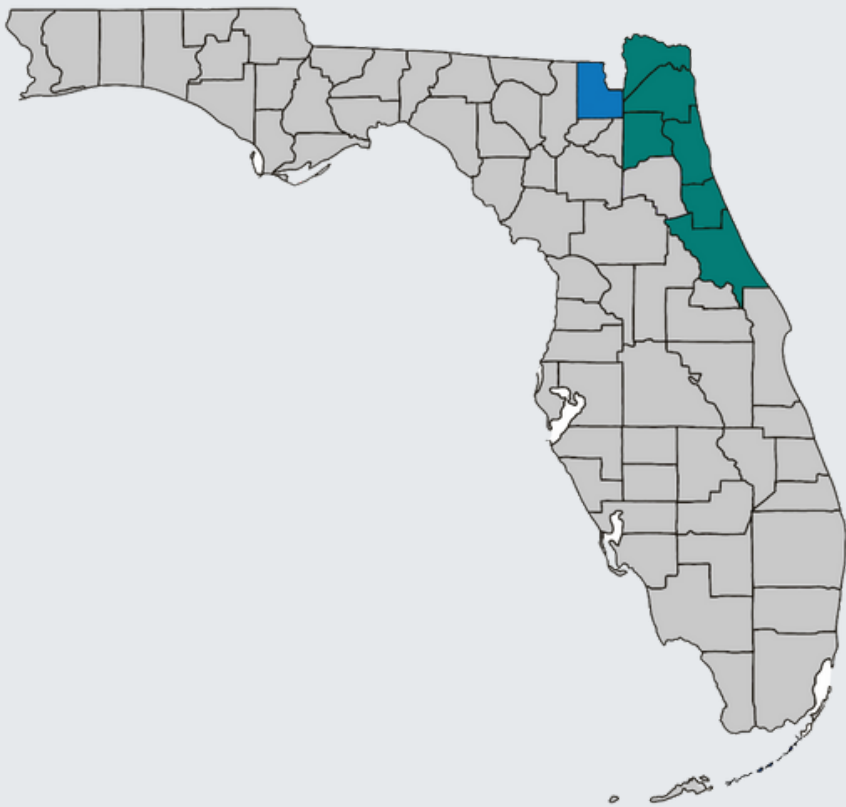
Overall Rankings	Health Outcomes: 47th out of 67 counties			
	Health Factors: 36th out of 67 counties			
Breakdown of Health Factors Rankings	HEALTH BEHAVIORS	CLINICAL CARE	SOCIO-ECONOMIC	PHYSICAL ENVIRONMENT
	Tobacco Diet and Exercise Alcohol Use High-Risk Sex	Access to Care Quality of Care	Education Employment Income Family/Social Support Community Safety	Air Quality Built Environment Access to Healthy Food Liquor Stores
	Baker Rank: 47th *improved from 2021	Baker Rank: 41st *declined from 2021	Baker Rank: 13th *improved from 2021	Baker Rank: 26th *improved from 2021

Data Source: Robert Wood Johnson Foundation (2022); retrieved from County Health Rankings and Roadmaps: <https://www.countyhealthrankings.org/>

NEIGHBORHOOD & BUILT ENVIRONMENT

Geography and Governance

Baker County was founded nearly 160 years ago. This county encompasses approximately 585 square miles of Northeast Florida immediately west of the metropolitan city of Jacksonville, 140 miles east of Florida’s capitol Tallahassee, and 45 miles north of the University of Florida in Gainesville. The county contains almost 4 square miles of water in its lakes and rivers and many miles of undeveloped woodlands. The Osceola National Forest covers roughly 220,000 acres of the northern part of Baker County. The five-member elected Board of County Commissioners represents the citizens of Baker County. Each elected member represents a district within the county but is elected countywide.



Total Households
8,828



Median Gross Rent
\$784



Total Affordable
Housing Units
132



Total Homeless
0



Percentage of
Sidewalks with Barriers
54%



Total Miles of
Bike Lanes
5



People Living Within
1/2 Mile of a Healthy
Food Source
0.9%



Nearby State
Parks
1



People Living Within
1/2 Mile of a Park
3.2%

ECONOMIC STABILITY

Baker County



Per Capita Income
\$24,051



Median Household
Income
\$62,229



Unemployment Rate
5.1%



Population 16+ in Labor Force **51.7%**



Social Security
Benefit Recipients
3,615



Individuals Below
Poverty Level
2,731



Children in Foster
Care
58

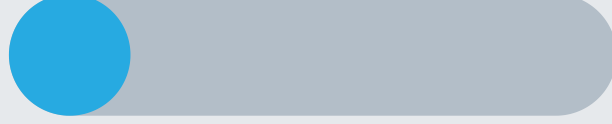
Florida



Per Capita Income
\$32,848



Median Household
Income
\$57,703



Unemployment Rate
5.4%



Population 16+ in Labor Force **58.9%**



Social Security
Benefit Recipients
3,622,600



Individuals Below
Poverty Level
2,772,939



Children in Foster
Care
23,517

Data Sources: U.S. Census Bureau, 2016-2020 American Community Survey 5-Year Estimates, DP02; U.S. Census Bureau, 2016-2020 American Community Survey 5-Year Estimates, DP03; Florida Health CHARTS, Families Below Poverty Level, 2020; Florida Health CHARTS, Children in Foster Care (Aged 0-17 Years), 2020; Florida Department of Elder Affairs Profile of Older Adults, 2021

EDUCATION ACCESS & QUALITY

Health Literacy

Health literacy is the degree to which individuals can obtain, process, and understand basic health information. Low health literacy is linked to poor health, higher rates of chronic disease, and higher mortality rates.

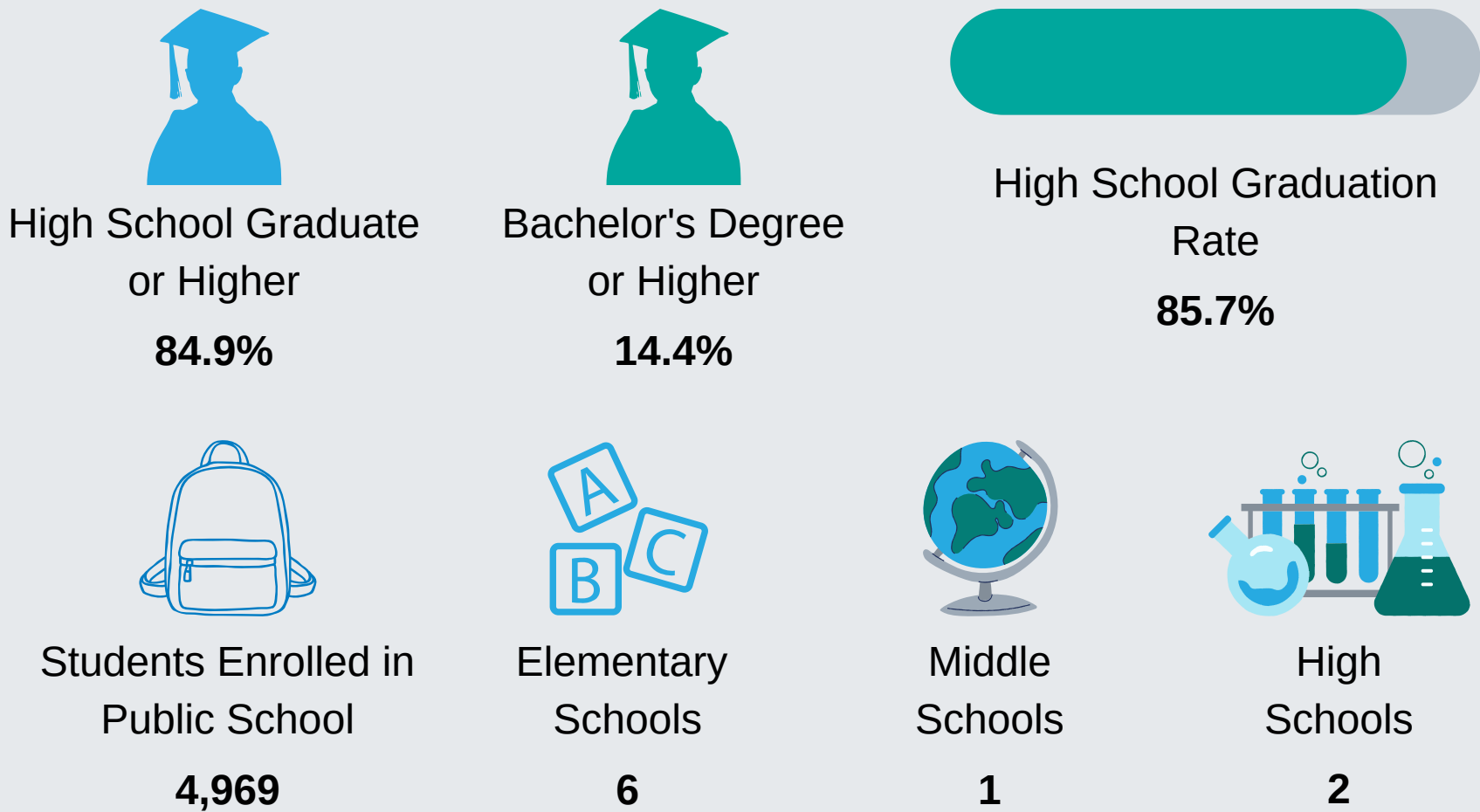
Health Insurance Literacy

Health insurance literacy is the ability to understand, choose, manage, and efficiently utilize health insurance plans. Health insurance literacy is crucial to affordable and effective healthcare decisions and outcomes.

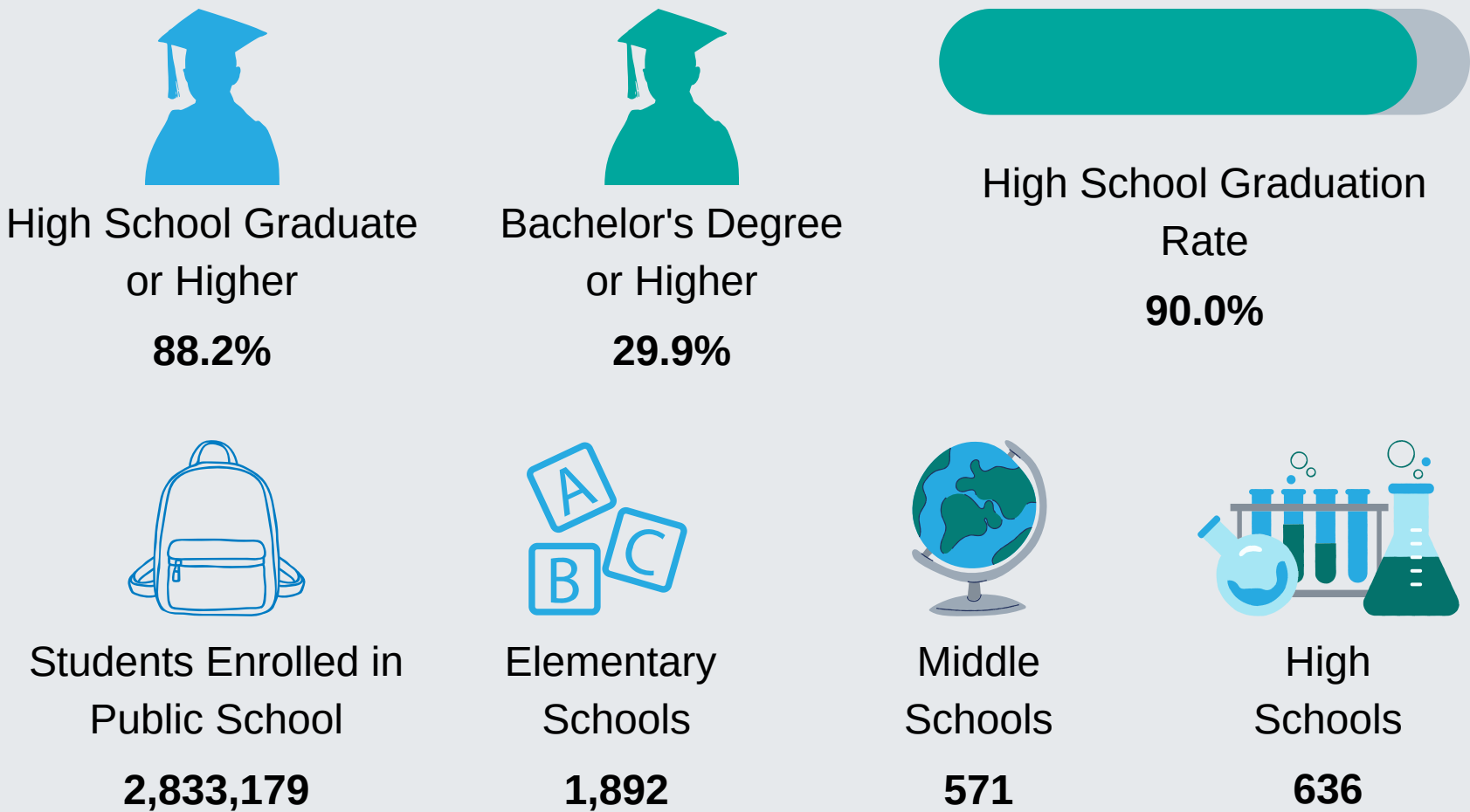
Digital Literacy

Digital literacy is the ability to use information and communication technologies to find, evaluate, create, and communicate information, requiring both cognitive and technical skills.

Baker County



Florida



HEALTHCARE ACCESS & QUALITY

Baker County

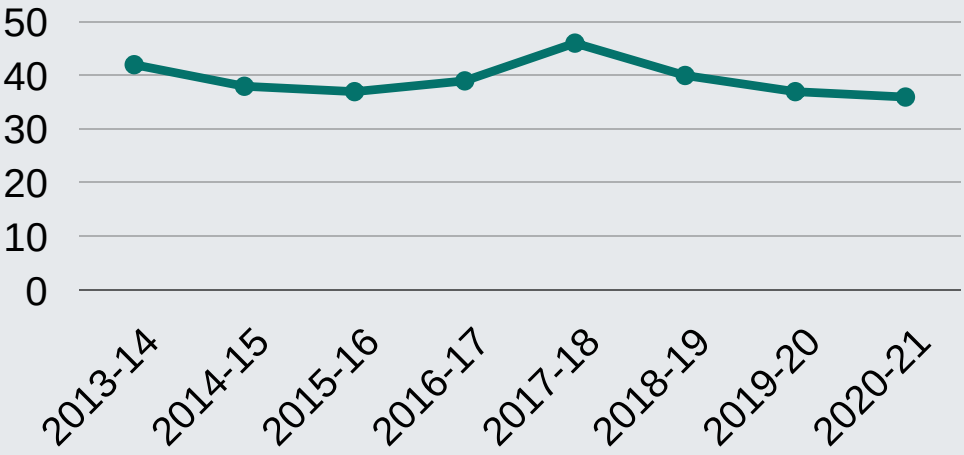
Licensed Providers



Licensed Mental Health Professionals

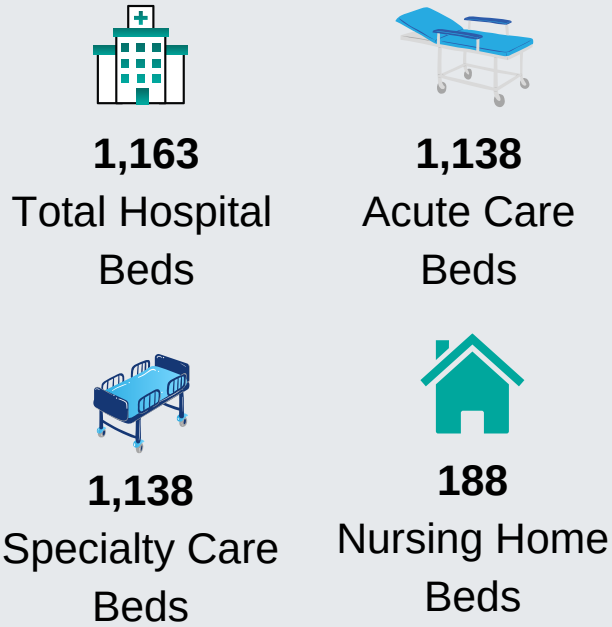


Number of Practicing Physicians



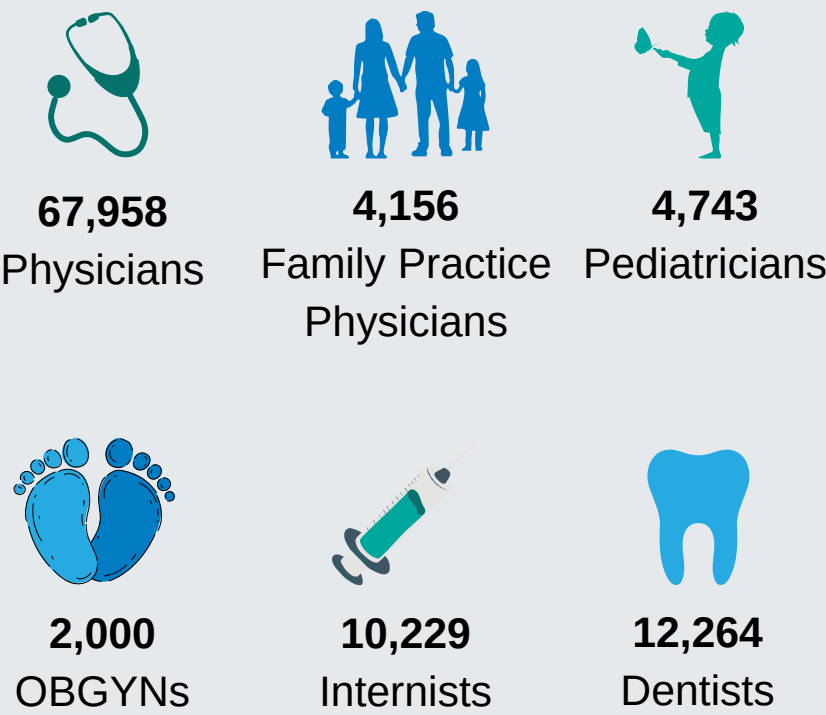
14.3% decrease in the number of practicing physicians from 2013-14 to 2020-21

Hospital Beds

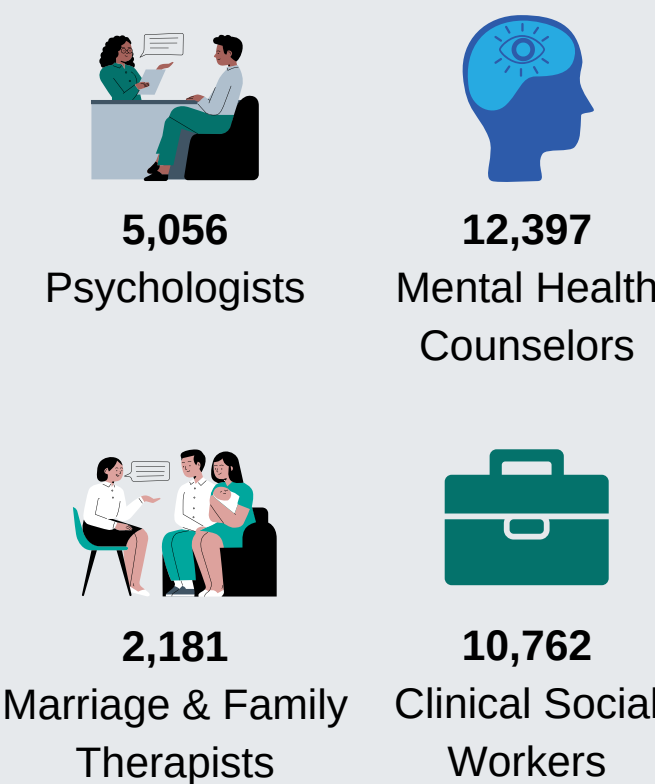


Florida

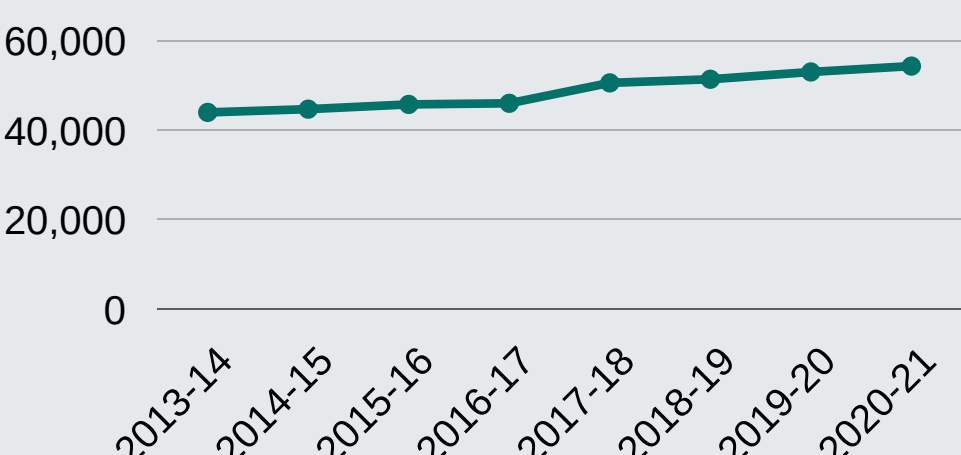
Licensed Providers



Licensed Mental Health Professionals

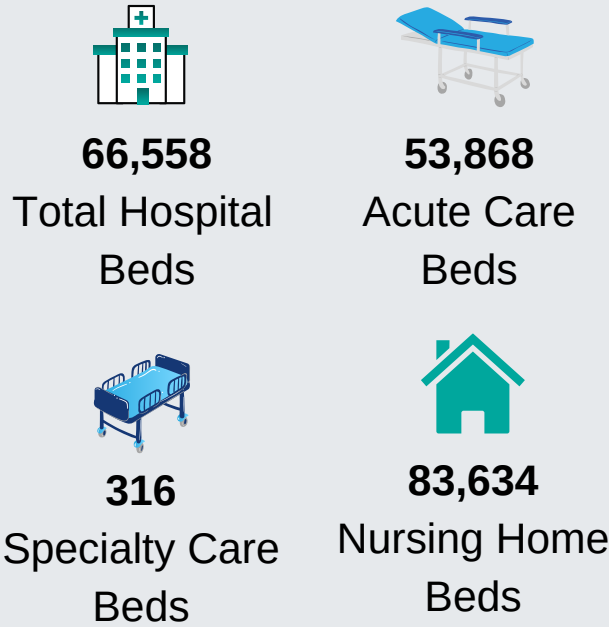


Number of Practicing Physicians



11.9% increase in the number of practicing physicians from 2013-14 to 2020-21

Hospital Beds






HEALTHCARE ACCESS & QUALITY

Health Insurance Coverage

	Baker County		Florida	
	Estimate	Percent	Estimate	Percent
Total Population	25,662	-	20,897,188	-
With health insurance coverage	22,768	88.7%	18,250,257	87.3%
With private health insurance	15,782	61.5%	13,150,816	62.9%
With public coverage	9,952	38.8%	7,710,771	36.9%
No health insurance coverage	2,894	11.3%	2,646,931	12.7%

Health Professional Shortage Area (HPSA)

	Designation Status	Designation Type
 <div>Primary Health Professional Shortage</div>	Yes	Low Income Population, Correctional Facility, Rural Health Clinic
 <div>Dental Health Professional Shortage</div>	Yes	Low Income Population, Correctional Facility, Rural Health Clinic
 <div>Mental Health Professional Shortage</div>	Yes	Low Income Population, Correctional Facility, Rural Health Clinic

Medically Underserved Area (MUA)

MUA	Service Area Name	Designation Type
00505	Baker County	Medically Underserved Area

LEADING CAUSES OF DEATH

Baker County



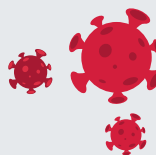
CANCER

Number of Deaths = 48
Percent of Deaths = 16.00%



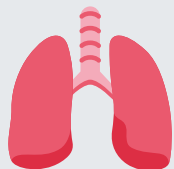
HEART DISEASE

Number of Deaths = 41
Percent of Deaths = 13.67%



COVID-19

Number of Deaths = 35
Percent of Deaths = 11.67%



CHRONIC LOWER RESPIRATORY DISEASE

Number of Deaths = 23
Percent of Deaths = 7.67%



UNINTENTIONAL INJURY

Number of Deaths = 22
Percent of Deaths = 7.33%

Florida



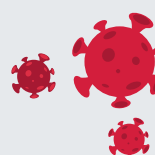
HEART DISEASE

Number of Deaths = 49,208
Percent of Deaths = 20.56%



CANCER

Number of Deaths = 45,723
Percent of Deaths = 19.10%



COVID-19

Number of Deaths = 19,157
Percent of Deaths = 8.00%



UNINTENTIONAL INJURY

Number of Deaths = 15,987
Percent of Deaths = 6.68%

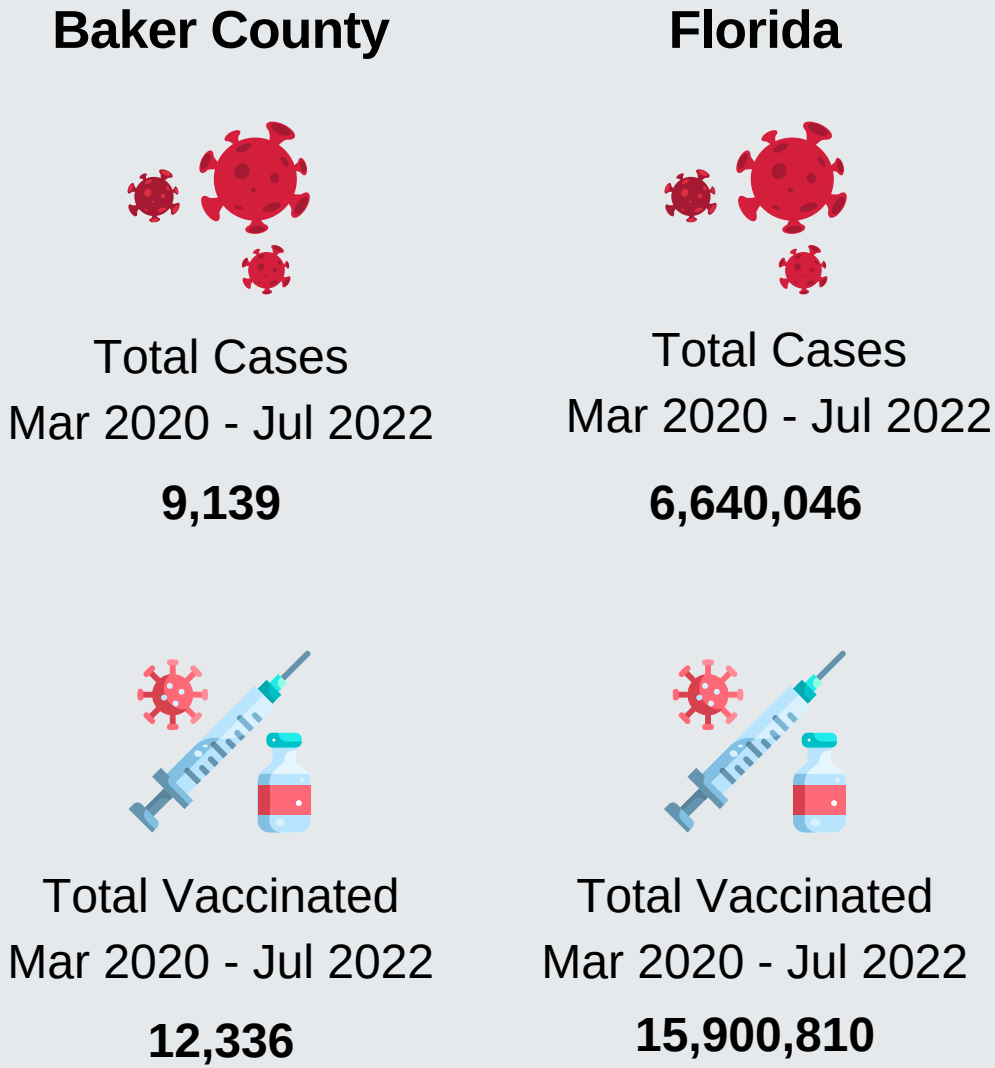


STROKE

Number of Deaths = 15,356
Percent of Deaths = 6.41%

INFECTIOUS DISEASES

COVID-19 is the disease caused by SARS-CoV-2, the coronavirus that emerged in December 2019. It was declared a pandemic on March 11, 2020 and cases continue to occur. The coronavirus can be spread from person to person and the best way to protect yourself is to get vaccinated and boosted when you are eligible, follow testing guidelines, wear a mask, wash your hands and practice physical distancing.



Chlamydia is a common sexually transmitted infection (STI) caused by bacteria. Chlamydia affects mostly young women, but it can occur in both men and women and in all age groups.

Baker County

120 Cases

Florida

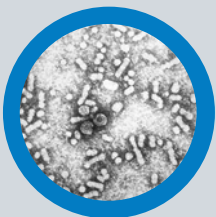
99,229 Cases



Infectious Syphilis is a bacterial infection usually spread by sexual contact. The disease starts as a painless sore — typically on the genitals, rectum or mouth. Syphilis spreads from person to person via skin or mucous membrane contact with these sores.

3 Cases

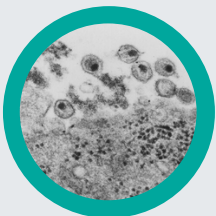
3,499 Cases



Hepatitis B (chronic) is a serious liver infection caused by the hepatitis B virus (HBV). For some people, hepatitis B infection becomes chronic, meaning it lasts more than six months. Having chronic hepatitis B increases your risk of developing liver failure, liver cancer or cirrhosis — a condition that permanently scars the liver.

6 Cases

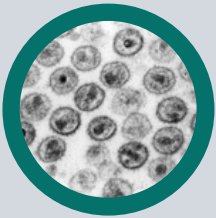
4,061 Cases



HIV is a sexually transmitted infection (STI). It can also be spread by contact with infected blood and from illicit injection drug use or sharing needles. It can also be spread from mother to child during pregnancy, childbirth or breastfeeding.

4 Cases

3,504 Cases



Acquired Immunodeficiency Syndrome (AIDS) is a chronic, potentially life-threatening condition caused by the human immunodeficiency virus (HIV). By damaging your immune system, HIV interferes with your body's ability to fight infection and disease.

1 Case

1,581 Cases

Data Source: Florida Department of Health COVID-19 Outbreak data from March 1, 2020 to July 14, 2022; Florida Department of Health, Bureau of Communicable Diseases

MATERNAL & CHILD HEALTH

Baker County



Total Births
358



Births to Teen Mothers
35



Births to Mothers 36+
34



C-Section Births
105



Mothers who Initiated
Breastfeeding
267



Births to Mothers who
Smoked during
Pregnancy
36

Florida



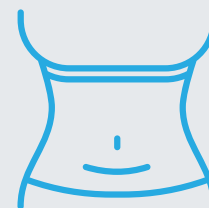
Total Births
209,645



Births to Teen Mothers
8,918



Births to Mothers 36+
32,761



C-Section Births
75,158



Mothers who Initiated
Breastfeeding
179,098



Births to Mothers who
Smoked during
Pregnancy
7,763

	Baker County	Florida
	Estimate	Estimate
Maternal Deaths	0	28
Infant Deaths	4	1,213
White Infant Deaths	3	627
Black Infant Deaths	1	491
Hispanic Infant Deaths	0	309
Non-Hispanic Infant Deaths	4	870
Sudden Unexpected Infant Deaths (SUID)	0	207

SOCIAL & COMMUNITY CONTEXT

Baker County



Individuals with
Disabilities
4,141



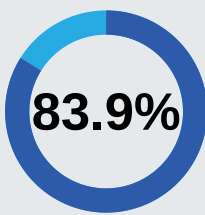
Veterans
1,825



Suicide Deaths
4



Hospitalizations for
Self-Harm Injuries
6



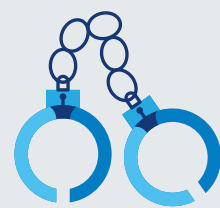
Adults with Good
Mental Health



Adults who Engage in
Heavy or Binge Drinking
15.2%



Substance Abuse Program
Enrollees
7 Children
39 Adults



Total Crime Index
406

*2.5% increase from
2019 to 2020

Crimes	Count
Murder	2
Rape	11
Robbery	3
Aggravated Assault	116
Burglary	33
Larceny	212
Motor Vehicle Theft	29

Florida



Individuals with
Disabilities
2,840,938



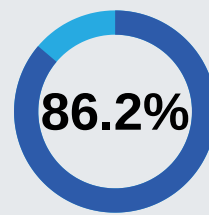
Veterans
1,416,472



Suicide Deaths
3,113



Hospitalizations for
Self-Harm Injuries
7,698



Adults with Good
Mental Health



Adults who Engage in
Heavy or Binge Drinking
18%



Substance Abuse Program
Enrollees
7,458 Children
42,298 Adults



Total Crime Index
464,805

*14.1% decrease
from 2019 to 2020

Crimes	Count
Murder	1,285
Rape	7,650
Robbery	13,439
Aggravated Assault	60,567
Burglary	51,928
Larceny	291,923
Motor Vehicle Theft	38,013